

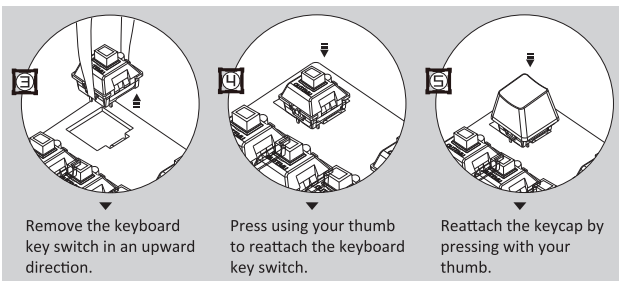
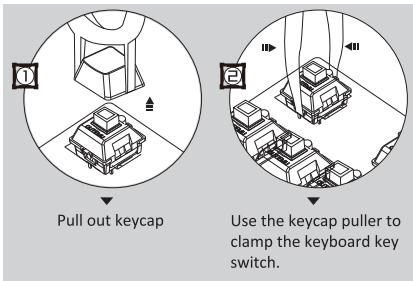
GK3

GAMING KEYBOARD

Quick Installation Guide



Install Guide



Specifications

Key Architecture	Mechanical
Switch Life	50M times
Switch Peak Force	60g ± 10g
Key	104 keys
Simultaneous Key input	6 N - Key Rollover (standard) Full N - Key Rollover (gaming)
Dimension (L x W x H)	459.5 x 204.25 x 36.8 mm
Keyboard Weight	1139 ± 10g
Cable Length	1800mm
Interface	USB
OS Support	Windows XP / Vista / Windows 7 / Windows 8 / Windows 10



Tel: 886-2-2218-0150 Fax: 886-2-2218-1552 www.biostar.com.tw
2F, No. 108-2 Min Chuan Road, Hsin Tien., New Taipei City 231, Taiwan, R.O.C

User Guide

LED LIGHTING MODES

This mode has 9 LED backlight mode, default as Marquee mode goes to light up mode in the first plug-in, then it will be default as last running mode by end user setting.



- Mode 1 Lighting area separated mode
Same as and FN+1 lighting effects.
- Mode 2 Scanning Rows Left & Right Lighting Mode
Every other row of keys scans from either left to right or right to left.
- Mode 3 Scanning 45 degree Left & Right Lighting Mode
Every column of keys scans from left and right edges to the center.
- Mode 4 Snake Lighting Mode
Lights individually starting at lower left in a spiral motion towards the center.
- Mode 5 Wave Lighting Mode
Lights from left to right with a slow fade transition.
- Mode 6 Water Ripple Lighting Mode
Keys light up with a ripple out effect centered on the individual keys when clicked.
- Mode 7 Full Lighting Mode
Lights up every key on the keyboard (stays on).



Mode 8 Key Lighting Mode

Lights up each key pressed for a 1 second duration.

Mode 9 Breathing Lighting Mode

Slowly Breathing light effect.

LED LIGHTING CONTROLS

Adjusting the speed of looped lighting modes between 3 speeds: Slow, Medium, and Fast.(Not available for modes 1 & 7)



Adjusting the brightness of LEDs between 3 brightness levels: Off, Medium, and High.



CUSTOMIZED LIGHTING MODE

The CYBERPOWERPC Skorpion K1 also lets you create your own customized light layout where you can turn on the LED lights for the keys important to you. Follow the instructions below to setup.

Choosing Light Mode

Activate one of the two customized light modes using the keys below.



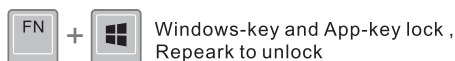
Editing Customized Keys

FN+9 or FN+0 to go into customized function, then press FN+HOME to start recording, press keys (pres again to cancel) made up the favour graphic, then press FN+END to quit the recording.



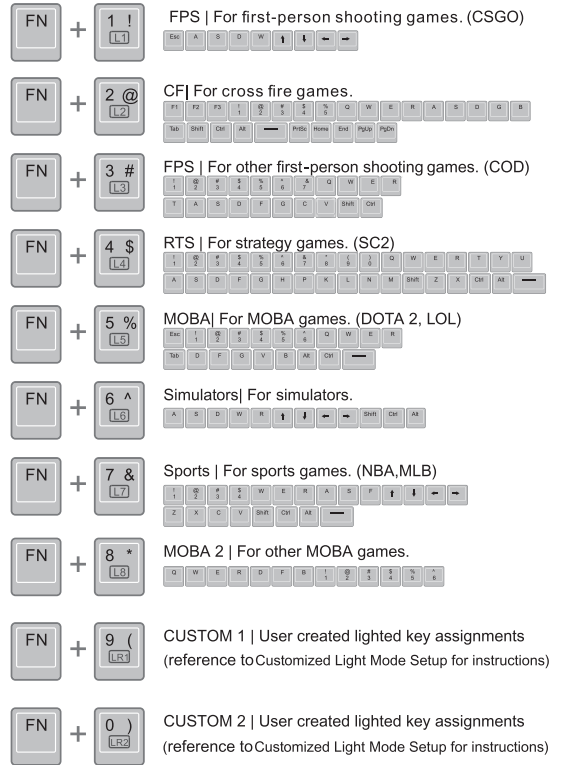
Now when you choose Custom Mode 1 or Custom Mode 2 it will show you the key layout that you created.

LOCK FUNCTION KEYS



GAMING PRESETS LIGHTING MODES

8 Lighting effect



Multi-media function (FN+F1~F12)

