

# ***T41-A7 BIOS Manual***

---

<b>BIOS Setup .....</b>	<b>1</b>
<b>1 Main Menu.....</b>	<b>3</b>
<b>2 Advanced Menu.....</b>	<b>7</b>
<b>3 PCIPnP Menu.....</b>	<b>18</b>
<b>4 Boot Menu.....</b>	<b>20</b>
<b>5 Chipset Menu.....</b>	<b>23</b>
<b>6 T-Series Menu.....</b>	<b>28</b>
<b>7 Exit Menu.....</b>	<b>35</b>

# ***T41-A7 BIOS Manual***

---

## **BIOS Setup**

### **Introduction**

The purpose of this manual is to describe the settings in the AMI BIOS Setup program on this motherboard. The Setup program allows users to modify the basic system configuration and save these settings to CMOS RAM. The power of CMOS RAM is supplied by a battery so that it retains the Setup information when the power is turned off.

Basic Input-Output System (BIOS) determines what a computer can do without accessing programs from a disk. This system controls most of the input and output devices such as keyboard, mouse, serial ports and disk drives. BIOS activates at the first stage of the booting process, loading and executing the operating system. Some additional features, such as virus and password protection or chipset fine-tuning options are also included in BIOS.

The rest of this manual will to guide you through the options and settings in BIOS Setup.

### **Plug and Play Support**

This AMI BIOS supports the Plug and Play Version 1.0A specification.

### **EPA Green PC Support**

This AMI BIOS supports Version 1.03 of the EPA Green PC specification.

### **APM Support**

This AMI BIOS supports Version 1.1&1.2 of the Advanced Power Management (APM) specification. Power management features are implemented via the System Management Interrupt (SMI). Sleep and Suspend power management modes are supported. Power to the hard disk drives and video monitors can also be managed by this AMI BIOS.

### **ACPI Support**

AMI ACPI BIOS support Version 1.0/2.0 of Advanced Configuration and Power interface specification (ACPI). It provides ASL code for power management and device configuration capabilities as defined in the ACPI specification, developed by Microsoft, Intel and Toshiba.

# ***T41-A7 BIOS Manual***

---

## **PCI Bus Support**

This AMI BIOS also supports Version 2.3 of the Intel PCI (Peripheral Component Interconnect) local bus specification.

## **DRAM Support**

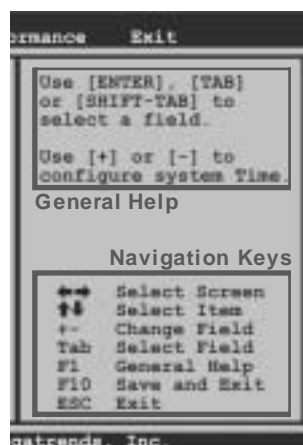
DDR2 SDRAM (Double Data Rate II Synchronous DRAM) is supported.

## **Supported CPUs**

This AMI BIOS supports the Intel CPU.

## **Using Setup**

When starting up the computer, press <Del> during the **Power-On Self-Test (POST)** to enter the BIOS setup utility. In the BIOS setup utility, you will see **General Help** description at the top right corner, and this is providing a brief description of the selected item. **Navigation Keys** for that particular menu are at the bottom right corner, and you can use these keys to select item and change the settings.



## **Notice**

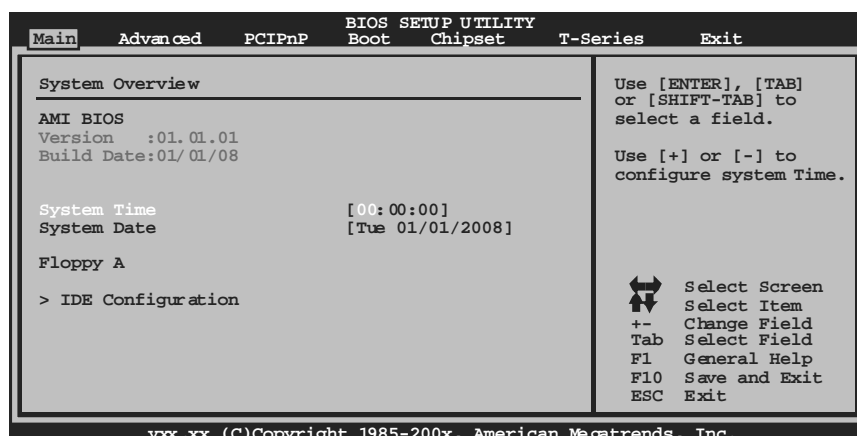
- The default BIOS settings apply for most conditions to ensure optimum performance of the motherboard. If the system becomes unstable after changing any settings, please load the default settings to ensure system's compatibility and stability. Use Load Setup Default under the Exit Menu.
- For better system performance, the BIOS firmware is being continuously updated. The BIOS information described in this manual is for your reference only. The actual BIOS information and settings on board may be slightly different from this manual.
- The content of this manual is subject to be changed without notice. We will not be responsible for any mistakes found in this user's manual and any system damage that may be caused by wrong-settings.

# T41-A7 BIOS Manual

---

## 1 Main Menu

Once you enter AMI BIOS Setup Utility, the Main Menu will appear on the screen providing an overview of the basic system information.



### AMI BIOS

Shows system information including BIOS version, built date, etc.

### System Time

Set the system internal clock.

### System Date

Set the system date. Note that the 'Day' automatically changes when you set the date.

### Floppy A

Select the type of floppy disk drive installed in your system.

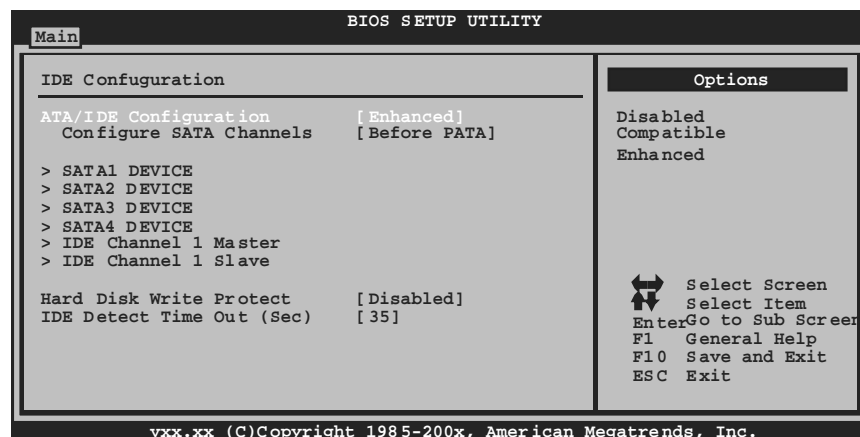
Options: 360K, 5.25 in / 1.2M, 5.25 in / 720K, 3.5 in / 1.44M, 3.5 in / 2.88M, 3.5 in / None

# T41-A7 BIOS Manual

---

## IDE Configuration

The BIOS will automatically detect the presence of IDE/SATA devices. There is a sub-menu for each IDE/SATA device. Select a device and press <Enter> to enter the sub-menu of detailed options.



## ATA/IDE Configuration

This item allows you to control the onboard IDE controller.

Options: Enhanced (Default) / Compatible / Disabled

## Configure SATA Channels

This item allows you to control the SATA channel configuration sequence..

Options: Before PATA (Default) / Behind PATA

## Legacy IDE Channels

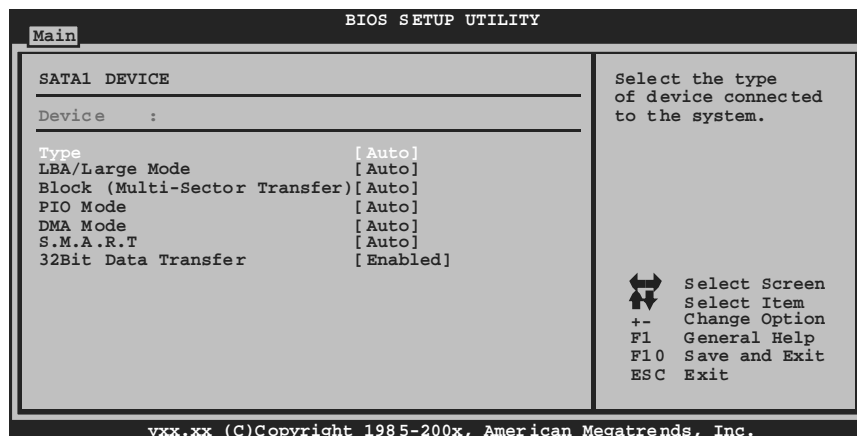
This item appears only when ATA/IDE Configuration is set "Compatible."

Options: SATA Pri, PATA Sec (Default) / SATA Only / PATA Pri, SATA Sec / PATA Only

# T41-A7 BIOS Manual

---

## SATA1/2/3/4 Devices & IDE Channel 1 Master/Slave



The BIOS detects the information and values of respective devices, and these information and values are shown below to the name of the sub-menu.

### **Type**

Select the type of the IDE/SATA drive.

Options: Auto (Default) / CD/DVD / ARMD / Not Installed

### **LBA/Large Mode**

Enable or disable the LBA mode.

Options: Auto (Default) / Disabled

### **Block (MultiSector Transfer)**

Enable or disable multi-sector transfer.

Options: Auto (Default) / Disabled

### **PIO Mode**

Select the PIO mode.

Options: Auto (Default) / 0 / 1 / 2 / 3 / 4

### **DMA Mode**

Select the DMA mode.

Options: Auto (Default) / SWDMA0 ~ 2 / MWDMA0 ~ 2 / UDMA0 ~ 5

# ***T41-A7 BIOS Manual***

---

## ***S.M.A.R.T***

Set the Smart Monitoring, Analysis, and Reporting Technology.

Options: Auto (Default) / Disabled / Enabled

## ***32Bit Data Transfer***

Enable or disable 32-bit data transfer.

Options: Enabled (Default) / Disabled

## **Hard Disk Write Protect**

Disable or enable device write protection. This will be effective only if the device is accessed through BIOS.

Options: Disabled (Default) / Enabled

## **IDE Detect Time Out (Sec)**

Select the time out value for detecting IDE/SATA devices.

Options: 35 (Default) / 30 / 25 / 20 / 15 / 10 / 5 / 0

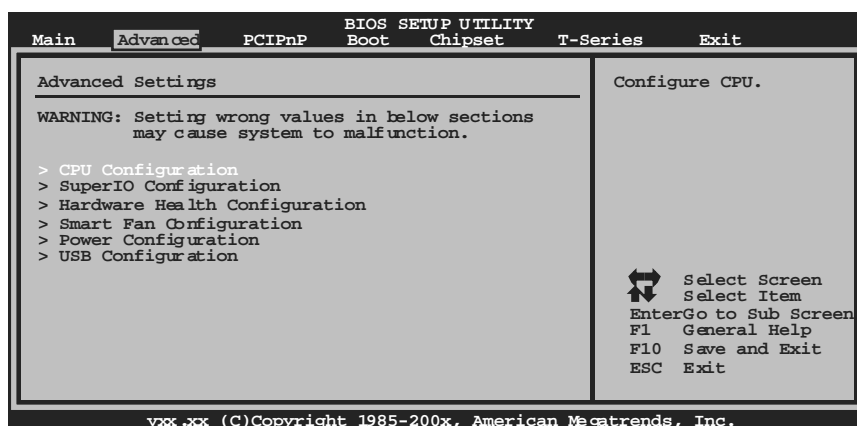
# T41-A7 BIOS Manual

## 2 Advanced Menu

The Advanced Menu allows you to configure the settings of CPU, Super I/O, Power Management, and other system devices.

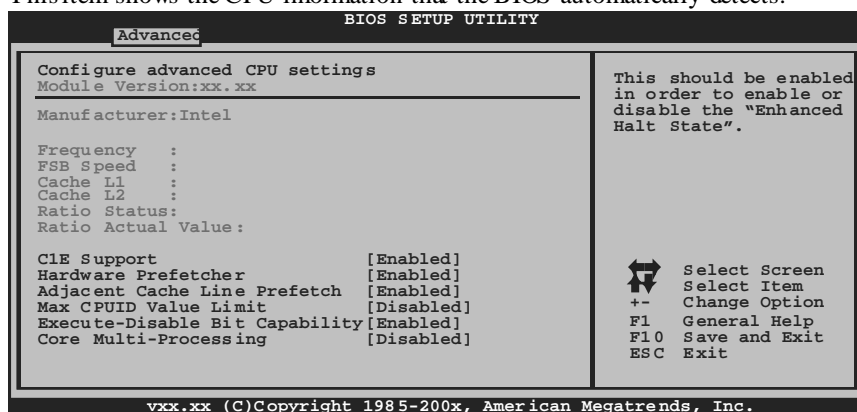
### Notice

- Beware of that setting inappropriate values in items of this menu may cause system to malfunction.



### CPU Configuration

This item shows the CPU information that the BIOS automatically detects.





# ***T41-A7 BIOS Manual***

---

## **C1E Support**

This item allows you to configure the Enhanced Halt State (C1E) function, which may reduce the power consumption of your system when the system is idle.

Options: Enabled (Default) / Disabled

## **Hardware Prefetcher**

The processor has a hardware prefetcher that automatically analyzes its requirements and prefetches data and instructions from the memory into the Level 2 cache that are likely to be required in the near future. This reduces the latency associated with memory reads.

Options: Enabled (Default) / Disabled

## **Adjacent Cache Line Prefetch**

The processor has a hardware adjacent cache line prefetch mechanism that automatically fetches an extra 64-byte cache line whenever the processor requests for a 64-byte cache line. This reduces cache latency by making the next cache line immediately available if the processor requires it as well.

Options: Enabled (Default) / Disabled

## **Max CPUID Value Limit**

When the computer is booted up, the operating system executes the CPUID instruction to identify the processor and its capabilities. Before it can do so, it must first query the processor to find out the highest input value CPUID recognizes. This determines the kind of basic information CPUID can provide the operating system.

Options: Disabled (Default) / Enabled

## **Execute-Disable Bit Capability**

This item allows you to configure the Execute Disabled Bit function, which protects your system from buffer overflow attacks.

Options: Enabled (Default) / Disabled

## **Core Multi-Processing**

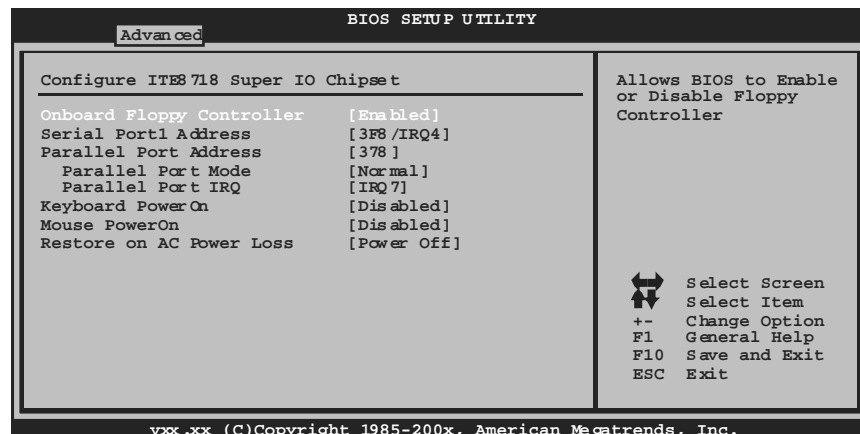
This item allows multi-processing function for multi-core processors.

Options: Enabled (Default) / Disabled

# T41-A7 BIOS Manual

---

## SuperIO Configuration



### Onboard Floppy Controller

Select enabled if your system has a floppy disk controller (FDC) installed on the system board and you wish to use it. If you installed another FDC or the system uses no floppy drive, select disabled in this field.

Options: Enabled (Default) / Disabled

### Serial Port1 Address

Select an address and corresponding interrupt for the first and second serial ports.

Options: 3F8/IRQ4 (Default) / 2F8/IRQ3 / 3E8/IRQ4 / 2E8/IRQ3 / Disabled

### Parallel Port Address

This item allows you to determine access onboard parallel port controller with which I/O Address.

Options: 378 (Default) / 278 / 3BC / Disabled

# ***T41-A7 BIOS Manual***

---

## **Parallel Port Mode**

This item allows you to determine how the parallel port should function.

Options: Normal (Default) Using Parallel port as Standard Printer Port.  
EPP Using Parallel Port as Enhanced Parallel Port.  
ECP Using Parallel port as Extended Capabilities Port.  
ECP+EPP Using Parallel port as ECP & EPP mode.

## **Parallel Port IRQ**

This item allows you to select the IRQ for the onboard parallel port.

Options: IRQ7 (Default) / IRQ5 / Disabled

## **Keyboard PowerOn**

This item allows you to control the keyboard power on function.

Options: Disabled (Default) / Specific Key / Stroke Key

## **Specific Key Enter**

This item will show only when Keyboard PowerOn is set "Specific Key."

## **Stroke Keys Selected**

This item will show only when Keyboard PowerOn is set "Stroke Key."

Options: Ctrl+F1 (Default) / Wake Key / Power Key / Ctrl+F2 / Ctrl+F3 /  
Ctrl +F4 / Ctrl+F5 / Ctrl+F6

## **Mouse PowerOn**

This item allows you to control the mouse power on function.

Options: Disabled (Default) / Enabled

## **Restore on AC Power Loss**

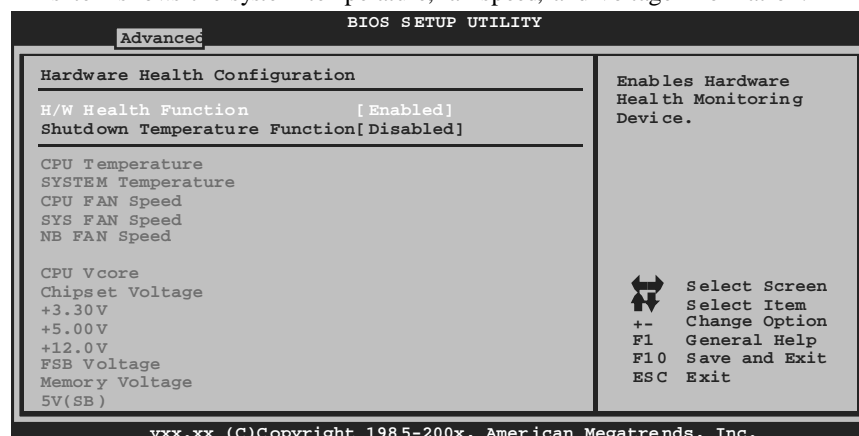
This setting specifies how your system should behave after a power fail or interrupts occurs. By choosing Disabled will leave the computer in the power off state. Choosing Enabled will restore the system to the status before power failure or interrupt occurs.

Options: Power Off (Default) / Power ON / Last State

# T41-A7 BIOS Manual

## Hardware Health Configuration

This item shows the system temperature, fan speed, and voltage information.



### H/W Health Function

If your computer contains a monitoring system, it will show PC health status during POST stage.

Options: Enabled (Default) / Disabled

### Shutdown Temperature Function

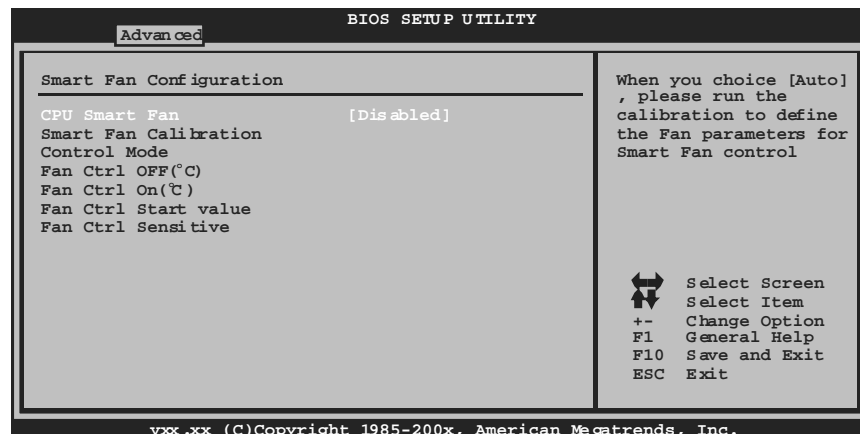
This item allows you to set up the CPU shutdown Temperature. This item is only effective under Windows 98 ACPI mode.

Options: Disabled (Default) / 60°C/140°F / 65°C/149°F / 70°C/158°F / 75°C/167°F / 80°C/176°F / 85°C/185°F / 90°C/194°F

# T41-A7 BIOS Manual

---

## Smart Fan Configuration



### CPU Smart Fan

This item allows you to control the CPU Smart Fan function.

Options: Disabled (default) / Auto

### Smart Fan Calibration

Choose this item and then the BIOS will auto test and detect the CPU/System fan functions and show CPU/System fan speed.

### Control Mode

This item provides several operation modes of the fan.

Options: Quiet / Performance / Manual

### Fan Ctrl OFF(°C)

If the CPU/System Temperature is lower than the set value, FAN will turn off.

Options: 0~127 (°C)

### Fan Ctrl On(°C)

CPU/System fan starts to work under smart fan function when arrive this set value.

Options: 0~127 (°C)

# T41-A7 BIOS Manual

## Fan Ctrl Start Value

When CPU/System temperature arrives to the set value, the CPU/System fan will work under Smart Fan Function mode.


Options: 0~127 (°C)

## Fan Ctrl Sensitive

Increasing the value will raise the speed of CPU/System fan.

Options: 1~127

## Power Configuration

BIOS SETUP UTILITY	
Advanced	
<b>ACPI Settings</b>	
Suspend mode	[S1(POS)]
Repost Video on S3 Resume	[NO]
ACPI Version Features	[ACPI v1.0]
ACPI APIC support	[Enabled]
AMI OEMB table	[Enabled]
Headless mode	[Disabled]
Energy Lake Feature	[Disabled]
APIC ACPI SCI IRQ	[Disabled]
USB Device Wakeup From S3/S4	[Disabled]
High Performance Event Timer	[Disabled]
<b>PSI Control</b> [Enabled]	
<b>Advanced Resume Event Controls</b>	
Resume On Ring	[Disabled]
Resume On PME#	[Disabled]
Resume On RTC Alarm	[Disabled]
Select the ACPI state used for System Suspend.	
 Select Screen	
+- Select Item	
F1 Change Option	
F10 General Help	
ESC Save and Exit	
ESC Exit	

vxx.xx (C)Copyright 1985-200x, American Megatrends, Inc.

## Suspend mode

The item allows you to select the suspend type under the ACPI operating system.

Options: S1 (POS) (Default)      Power on Suspend  
          S3 (STR)                Suspend to RAM  
          Auto                    POS+STR

## Repost Video on S3 Resume

Options: NO (Default) / YES

# ***T41-A7 BIOS Manual***

---

## **ACPI Version Features**

The item allows you to select the version of ACPI.

Options: ACPI v1.0 (Default) / ACPI v2.0 / ACPI v3.0

## **ACPI APIC support**

This item is used to enable or disable the motherboard's APIC (Advanced Programmable Interrupt Controller). The APIC provides multiprocessor support, more IRQs and faster interrupt handling.

Options: Enabled (Default) / Disabled

## **AMI OEMB table**

Set this value to allow the ACPI BIOS to add a pointer to an OEMB table in the Root System Description Table (RSDT) table.

Options: Enabled (Default) / Disabled

## **Headless mode**

This is a server-specific feature. A headless server is one that operates without a keyboard, monitor or mouse. To run in headless mode, both BIOS and operating system (e.g. Windows Server 2003) must support headless operation.

Options: Disabled (Default) / Enabled

## **Energy Lake Feature**

This item allows you to control the energy lake feature.

Options: Disabled (Default) / Enabled

## **APIC ACPI SCI IRQ**

Options: Disabled (Default) / Enabled

## **USB Device Wakeup from S3/S4**

This item allows you to enable or disable the USB resume from S3/S4 function.

Options: Disabled (Default) / Enabled

# ***T41-A7 BIOS Manual***

---

## **High Performance Event Timer**

This item allows you to enable or disabled the HPET.

Options: Disabled (Default) / Enabled

## **HPET Memory Address**

This item allows you to set the memory address of HPET.

Options: FED00000h (Default) / FED01000h / FED02000h / FED03000h

## **PSI Control**

This item allows you to control power supply of CPU for the purpose of saving energy. Moreover, the power status of CPU is shown by the 4 LEDs. When PSI Control is enabled, the system can control power supply of CPU automatically according to system load. That is, the whole 4 LEDs or only part of them will shine; when the function is disabled, the system provides full power for CPU. In other words, the LEDs will shine together.

Options: Enabled (Default) / Disabled

## **Resume On Ring**

This item allows you to control the wake on ring function.

Options: Disabled (Default) / Enabled

## **Resume On PME#**

When you select Enabled, a PME signal from PCI card returns the system to Full ON state. For this function to work, you may need a LAN add-on card which supports the Wake on LAN function. Set the Wake on LAN (WOL) jumper on motherboard to enable if applicable.

Options: Disabled (Default) / Enabled

## **Resume On RTC Alarm**

When “Enabled”, you can set the date and time at which the RTC (real-time clock) alarm awakens the system from Suspend mode.

Options: Disabled (Default) / Enabled

## **RTC Alarm Date (Days)**

You can choose which date the system will boot up.



# T41-A7 BIOS Manual

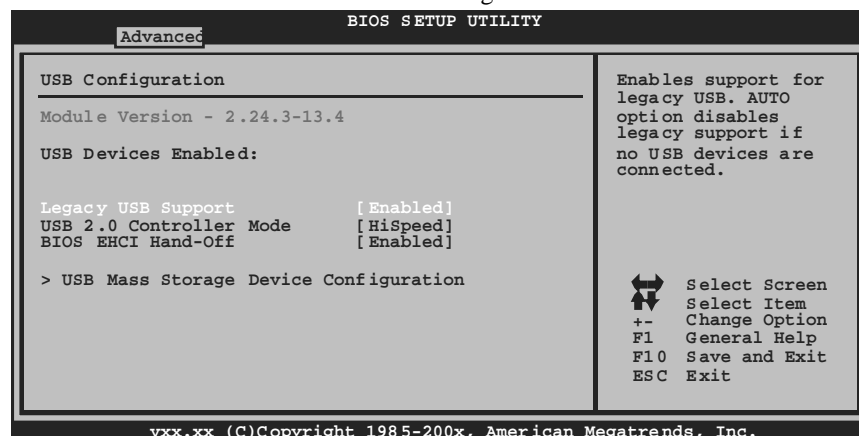
---

## RTC Alarm Time

You can choose the system boot up time, input hour, minute and second to specify.

## USB Configuration

This item shows the USB controller and using USB device information.



## Legacy USB Support

This item determines if the BIOS should provide legacy support for USB devices like the keyboard, mouse, and USB drive. This is a useful feature when using such USB devices with operating systems that do not natively support USB (e.g. Microsoft DOS or Windows NT).

Options: Enabled (Default) / Disabled

## USB 2.0 Controller Mode

This item allows you to select the operation mode of the USB 2.0 controller.

Options: HiSpeed (Default) USB 2.0-480Mbps  
FullSpeed USB 1.1-12Mbps

## BIOS EHCI Hand-Off

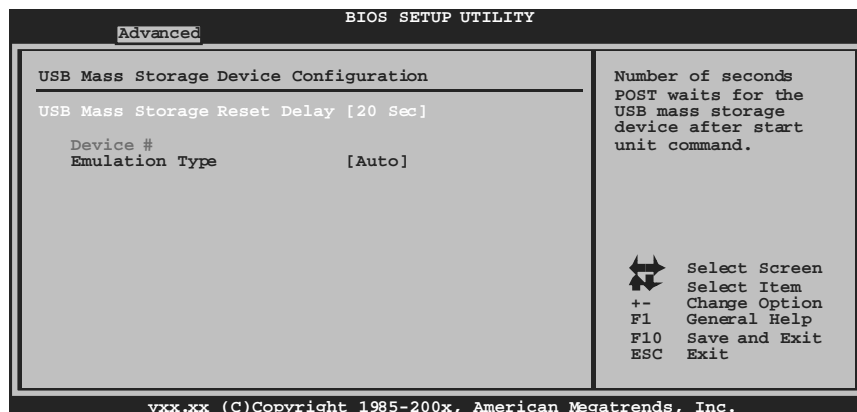
This item allows you to enable support for operating systems without an EHCI hand-off feature.

Options: Enabled (Default) / Disabled

# T41-A7 BIOS Manual

---

## USB Mass Storage Device Configuration



### ***USB Mass Storage Reset Delay***

This item allows you to set the reset delay for USB mass storage device.

Options: 20 Sec (Default) / 10 Sec / 30 Sec / 40 Sec

### ***Emulation Type***

This item allows you to select the emulation type of the USB mass storage device.

Options: Auto (Default) / Floppy / Forced FDD / Hard Disk / CDROM

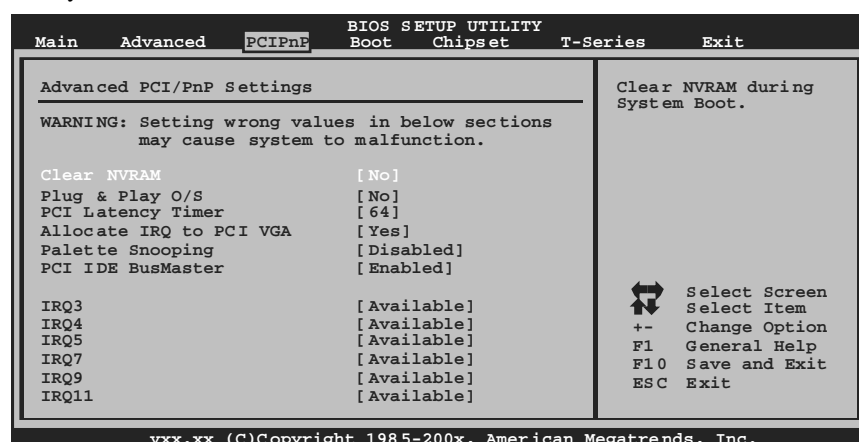
# T41-A7 BIOS Manual

## 3 PCIPnP Menu

This section describes configuring the PCI bus system. PCI, or Personal Computer Interconnect, is a system which allows I/O devices to operate at speeds nearing the speed of the CPU itselfuses when communicating with its own special components.

### Notice

- Beware of that setting inappropriate values in items of this menu may cause system to malfunction.



### Clear NVRAM

This item allows you to clear the data in the NVRAM (CMOS) by selecting "Yes".

Options: No (Default) / Yes

### Plug & Play OS

When set to YES, BIOS will only initialize the PnP cards used for the boot sequence (VGA, IDE, SCSI). The rest of the cards will be initialized by the PnP operating system like Window™ 95. When set to NO, BIOS will initialize all the PnP cards. For non-PnP operating systems (DOS, Netware™), this option must set to NO.

Options: No (Default) / Yes

# ***T41-A7 BIOS Manual***

---

## **PCI Latency Timer**

This item controls how long a PCI device can hold the PCI bus before another takes over. The longer the latency, the longer the PCI device can retain control of the bus before handing it over to another PCI device.

Options: 64 (Default) / 32 / 96 / 128 / 160 / 192 / 224 / 248

## **Allocate IRQ to PCI VGA**

This item allows BIOS to choose a IRQ to assign for the PCI VGA card.

Options: Yes (Default) / No

## **Palette Snooping**

Some old graphic controllers need to “snoop” on the VGA palette and then map it to their display as a way to provide boot information and VGA compatibility. This item allows such snooping to take place.

Options: Disabled (Default) / Enabled

## **PCI IDE BusMaster**

This item is a toggle for the built-in driver that allows the onboard IDE controller to perform DMA (Direct Memory Access) transfers.

Options: Enabled (Default) / Disabled

## **IRQ3/4/5/7/9/10/11/14/15**

These items will allow you to assign each system interrupt a type, depending on the type of device using the interrupt. The option “Available” means the IRQ is going to assign automatically.

Options: Available (Default) / Reserved

## **DMA Channel 0/1/3/5/6/7**

These items will allow you to assign each DMA channel a type, depending on the type of device using the channel. The option “Available” means the channel is going to assign automatically.

Options: Available (Default) / Reserved

## **Reserved Memory Size**

This item allows BIOS to reserve certain memory size for specific PCI device.

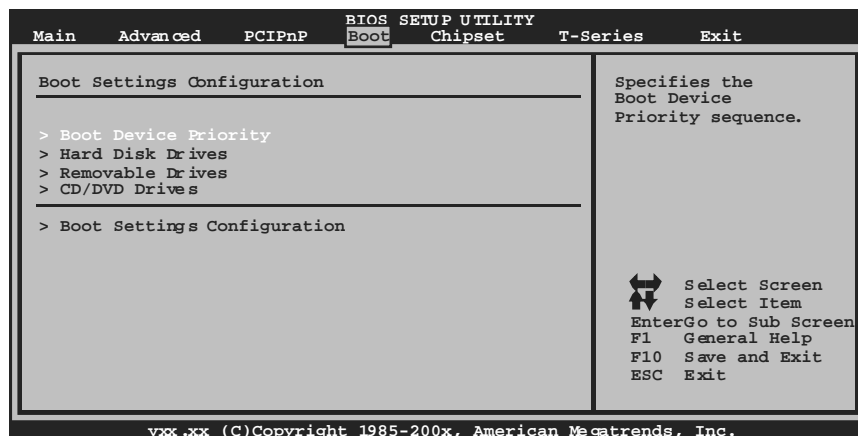
Options: Disabled (Default) / 16K / 32K / 64K

# T41-A7 BIOS Manual

---

## 4 Boot Menu

This menu allows you to setup the system boot options.



### Boot Device Priority

Items in this sub-menu specify the boot device priority sequence from the available devices. The number of device items that appears on the screen depends on the number of devices installed in the system.

### Hard Disk Drives

The BIOS will attempt to arrange the hard disk boot sequence automatically. You can also change the booting sequence. The number of device items that appears on the screen depends on the number of devices installed in the system.

### Removable Drives

The BIOS will attempt to arrange the removable drive boot sequence automatically. You can also change the booting sequence. The number of device items that appears on the screen depends on the number of devices installed in the system.

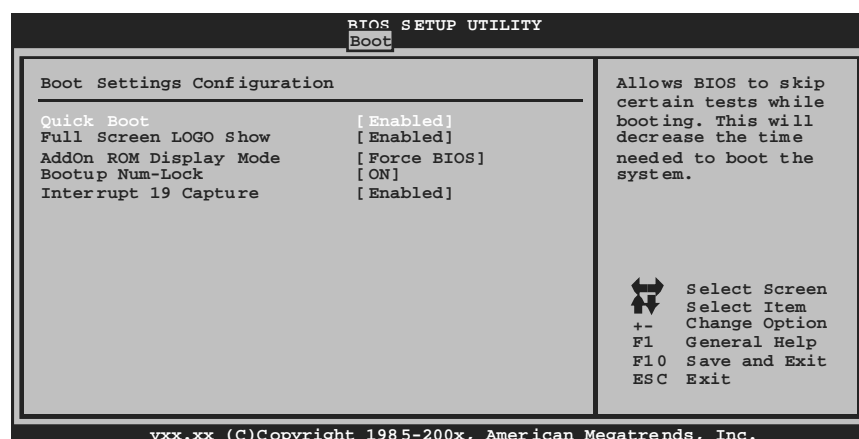
# T41-A7 BIOS Manual

---

## CD/DVD Drives

The BIOS will attempt to arrange the CD/DVD drive boot sequence automatically. You can also change the booting sequence. The number of device items that appears on the screen depends on the number of devices installed in the system.

## Boot Settings Configuration



### **Quick Boot**

Enabling this option will cause an abridged version of the Power On Self-Test (POST) to execute after you power up the computer.

Options: Enabled (Default) / Disabled

### **Full Screen LOGO Show**

This item allows you to enable/disable Full Screen LOGO Show function.

Options: Enabled (Default) / Disabled

### **AddOn ROM Display Mode**

This item sets the display mode for option ROM.

Options: Force BIOS (Default) / Keep Current

# ***T41-A7 BIOS Manual***

---

## **Bootup Num-Lock**

Selects the NumLock State after the system switched on.

Options: ON (Default) / OFF

## **Interrupt 19 Capture**

Interrupt 19 is the software interrupt that handles the boot disk function. When set to Enabled, this item allows the option ROMs to trap interrupt 19.

Options: Enabled (Default) / Disabled

# T41-A7 BIOS Manual

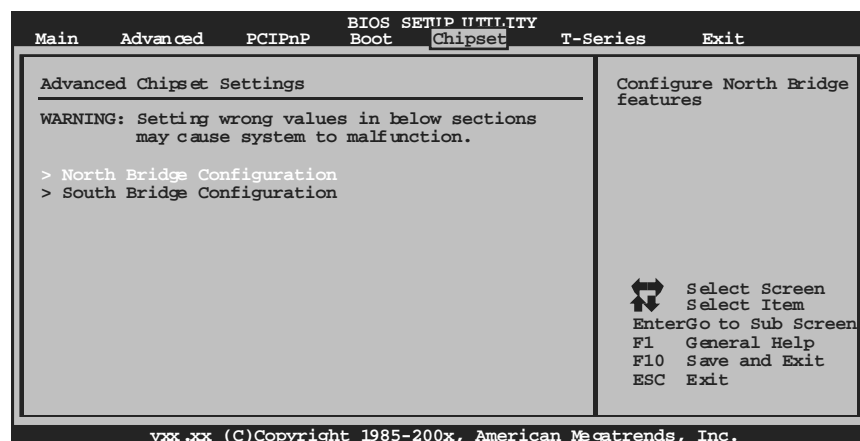
---

## 5 Chipset Menu

This submenu allows you to configure the specific features of the chipset installed on your system. This chipset manage bus speeds and access to system memory resources, such as DRAM. It also coordinates communications with the PCI bus.

### Notice

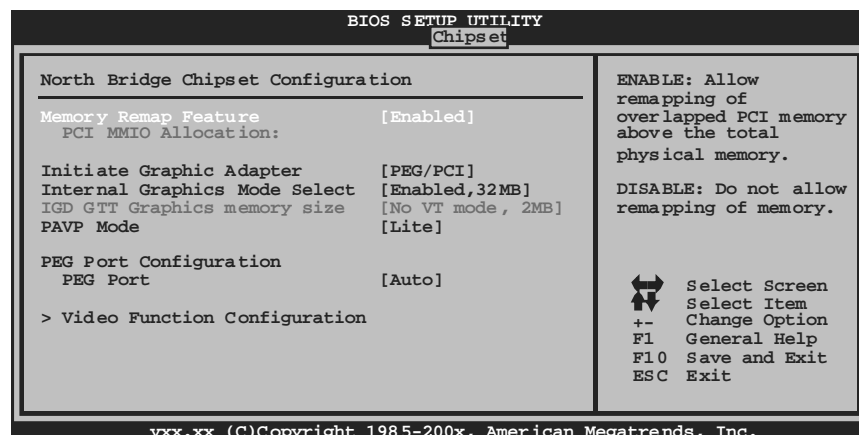
- Beware of that setting inappropriate values in items of this menu may cause system to malfunction.





# T41-A7 BIOS Manual

## North Bridge Configuration



### Memory Remap Feature

This item allows you to enable or disable the remapping of the overlapped PCI memory above the total physical memory. Only 64-bit OS supports this function.  
Options: Enabled (Default) / Disabled

### Initiate Graphic Adapter

This item allows you to enable or disable VGA controller.  
Options: PEG/PCI (Default) / IGD / PCI/IGD / PCI/PEG / PEG/IGD

### Internal Graphics Mode Select

This item will be different as your memory modules. When the memory size is decided, this frame buffer size will also be fixed.  
Options: Enabled,32MB (Default) / Enabled,64MB / Enabled,128MB / Disabled

### PAVP Mode

GMCH Protected Audio Video Path (PAVP) BIOS support.  
Options: Lite (Default) / Disabled / High

# T41-A7 BIOS Manual

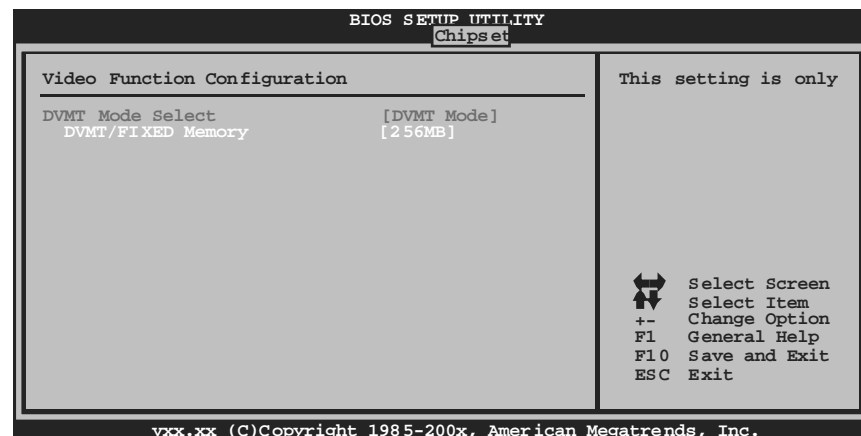
---

## PEG Port

This BIOS feature is a toggle that enables or disables the PCI Express port.

Options: Auto (Default) / Disabled

## Video Function Configuration



### *DVMT Mode Select*

This item allows you to select the DVMT mode.

Options: DVMT Mode (Default)

### *DVMT/FIXED Memory Size*

DVMT stands for “Dynamic Video Memory Technology”. This is an enhancement of the unified memory architecture (UMA) concept. DVMT will set the optimum amount of memory to be allocated for a balance between graphics and system performance. DVMT dynamically respond to system requirements and applications demands, by allocating the proper amount of display, texturing and buffer memory after the operating system has booted.

Options: 256MB (Default) / 128MB / Maximum DVMT

# T41-A7 BIOS Manual

## South Bridge Configuration

BIOS SETUP UTILITY	
Chipset	
South Bridge Chipset Configuration	
USB Functions	[8 USB Ports]
USB 2.0 Controller	[Enabled]
Audio Controller	[Azalia]
Onboard Lan Control	[Enabled]
Onboard Lan Boot ROM	[Disabled]
MAC ID Information	
SMBUS Controller	[Enabled]
SLP_S4# Min. Assertion Width	[1 to 2 seconds]
Options	
Disabled	
2 USB Ports	
4 USB Ports	
6 USB Ports	
8 USB Ports	
Select Screen	
Select Item	
+- Change Option	
F1 General Help	
F10 Save and Exit	
ESC Exit	

vx.x.xx (C)Copyright 1985-200x, American Megatrends, Inc.

### USB Functions

The item determines the number of functional USB port.

Options: 8 USB Ports (Default) / 6 USB Ports / 4 USB Ports / 2 USB Ports / Disabled

### USB 2.0 Controller

This entry is to enable/disable EHCI controller only. This Bios itself may/may not have high speed USB support. If the Bios has high speed USB support built in, the support will be automatically turn on when high speed device were attached.

Options: Enabled (Default) / Disabled

### Audio Controller

This item allows you to select the Audio support.

Options: Azalia (Default) / Disabled

# ***T41-A7 BIOS Manual***

---

## **Onboard Lan Control**

This item allows you to enable or disable the Onboard LAN.

Options: Enabled (Default) / Disabled

## **Onboard Lan Boot Rom**

This item allows you to select the Onboard LAN Boot ROM.

Options: Disabled (Default) / Enabled

## **MAC ID Information**

This item shows the LAN MAC ID.

## **SMBUS Controller**

This BIOS feature controls the I/O buffers for the SMBus.

Options: Enabled (Default) / Disabled

## **SLP\_S4# Min. Assertion Width**

Options: 1 to 2 seconds (Default)

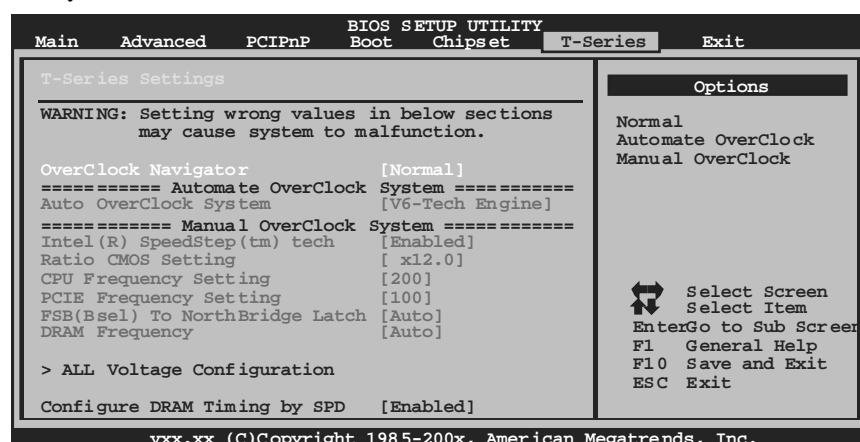
# T41-A7 BIOS Manual

## 6 T-Series Menu

This submenu allows you to change voltage and clock of various devices.  
(However, we suggest you to use the default setting. Changing the voltage and clock improperly may damage the device.)

### Notice

- Beware of that setting inappropriate values in items of this menu may cause system to malfunction.



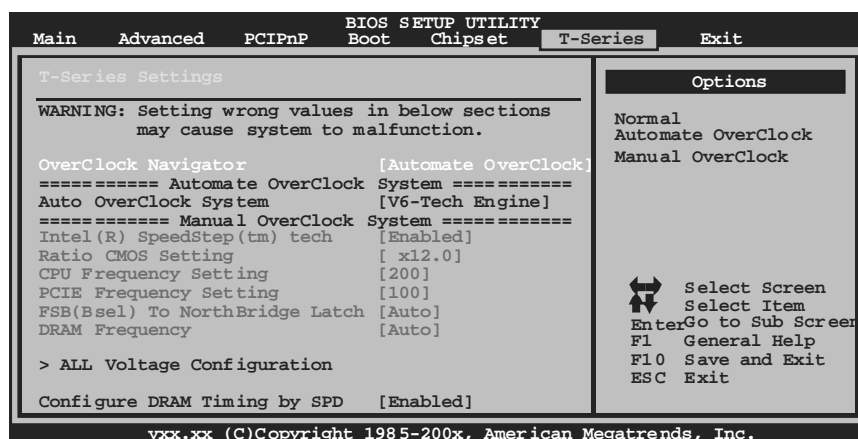
### OverClock Navigator

OverClock Navigator is designed for beginners in overclock field.  
Based on many test and experiments from Biostar Engineer Team, OverClock Navigator provides 3 default overclock configurations that are able to raise the system performance.

Options: Normal (Default) / Automate OverClock / Manual OverClock

# T41-A7 BIOS Manual

## Auto OverClock System



The Overclock Navigator provides 3 different engines helping you to overclock your system. These engines will boost your system performance to different level.

Options:

V6 Tech Engine

This engine will make a good over-clock performance.

V8 Tech Engine

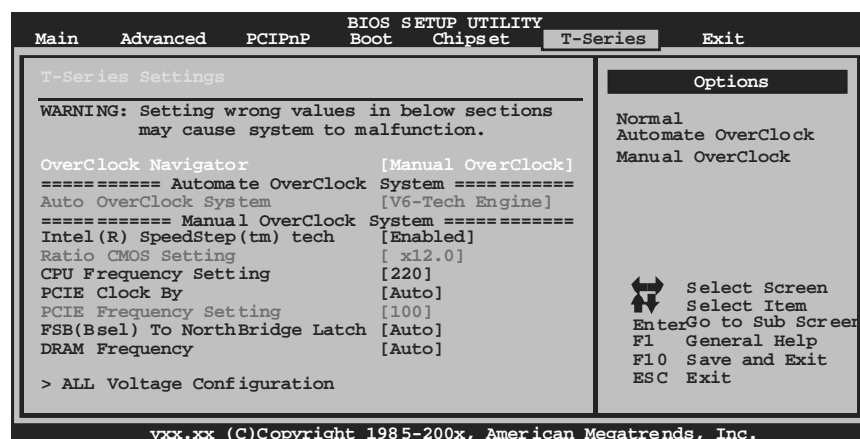
This engine will make a better over-clock performance.

V12 Tech Engine

This engine will make a best over-clock performance.

# T41-A7 BIOS Manual

## Manual Overclock System (M.O.S.)



MOS is designed for experienced overclock users.  
It allows users to customize personal overclock setting.

### Intel(R) SpeedStep(tm) Tech

This item allows you to enable SpeedStep technology for better power saving. SpeedStep is a technology built into some Intel processors that allows the clock speed of the processor to be dynamically changed by software.  
Options: Enabled (Default) / Disabled

### Ratio CMOS Setting

This item allows you to set the CPU ratio frequency.  
Options: x6.0 / x7.0 / x8.0 / x9.0 / x10.0 / x11.0 / x12.0 (Differed by CPU)

### CPU Frequency Setting

This item allows you to select the CPU Frequency.  
Options: Min= 100 MHz; Max= 800 MHz (Differed by CPU)

### PCIE Clock By

This item allows you to select the PCIE dock control  
Options: Auto (Default) / Manual

# ***T41-A7 BIOS Manual***

---

## **PCIE Frequency Setting**

This item allows you to select the PCIE dock control

Options: 100 (Default) / Min=100; Max=150

## **FSB(Bsel) To NorthBridge Latch**

This item allows you to select the FSB Frequency.

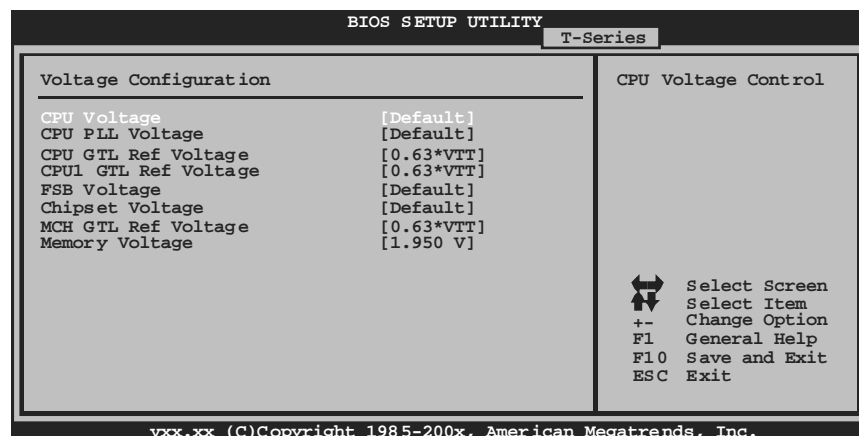
Options: Auto (Default) / FSB 800 / FSB 1066 / FSB 1333

## **DRAM Frequency**

This item allows you to control the Memory Clock.

Options: Auto (Default) / DDR2 440Mhz / DDR2 528Mhz / DDR2 550Mhz /  
DDR2 660Mhz / DDR2 733Mhz / DDR2 880Mhz (Differed by CPU)

## **ALL Voltage Configuration**



## **CPU Voltage**

This item allows you to select CPU Voltage Control.

Options: Auto (Default) / -0.050V ~ +0.1300V

## **CPU PLL Voltage**

Options: Default (Default) / +0.1V / +0.2V / +0.3V



# ***T41-A7 BIOS Manual***

---

## **CPU GTL Ref Voltage**

This item allows you to select CPU GTL Ref Voltage Control.

Options: 0.63\*VTT (Default) / 0.67\*VTT / 0.61\*VTT / 0.58\*VTT

## **CPU1 GTL Ref Voltage**

This item allows you to select CPU1 GTL Ref Voltage Control.

Options: 0.63\*VTT (Default) / 0.67\*VTT / 0.61\*VTT / 0.58\*VTT

## **FSB Voltage**

This item allows you to select FSB Voltage Control.

Options: Default (Default) / +0.1V / +0.2V / +0.3V

## **Chipset Voltage**

This item allows you to select Chipset Voltage Control.

Options: Default (Default) / +0.1V / +0.2V / 0.3V

## **MCH GTL Ref Voltage**

This item allows you to select MCH GTL Ref Voltage Control.

Options: 0.63\*VTT (Default) / 0.67\*VTT / 0.61\*VTT / 0.58\*VTT

## **Memory Voltage**

This item allows you to select DDR Voltage Control.

Options: 1.950 V (Default) / 2.055 V / 2.153 V / 2.250 V / 2.362 V / 2.457 V /  
2.557 V

## **Configure DRAM Timing by SPD**

Options: Enabled (Default) / Disabled

## **DRAM tCL**

Options: 3 (Default) / 3 ~ 10

## **DRAM tRAS**

Options: 9 (Default) / 9 ~ 24

# ***T41-A7 BIOS Manual***

---

## **DRAM tRP**

Options: 3 (Default) / 3 ~ 10

## **DRAM tRCD**

Options: 3 (Default) / 3 ~ 10

## **DRAM tWR**

Options: 3 (Default) / 3 ~ 15

## **DRAM tRFC**

Options: 15 (Default) / 15 ~ 78

## **DRAM tWTR**

Options: 2 (Default) / 2 ~ 15

## **DRAM tRRD**

Options: 2 (Default) / 2 ~ 15

## **DRAM tRTP**

Options: 2 (Default) / 2 ~ 15

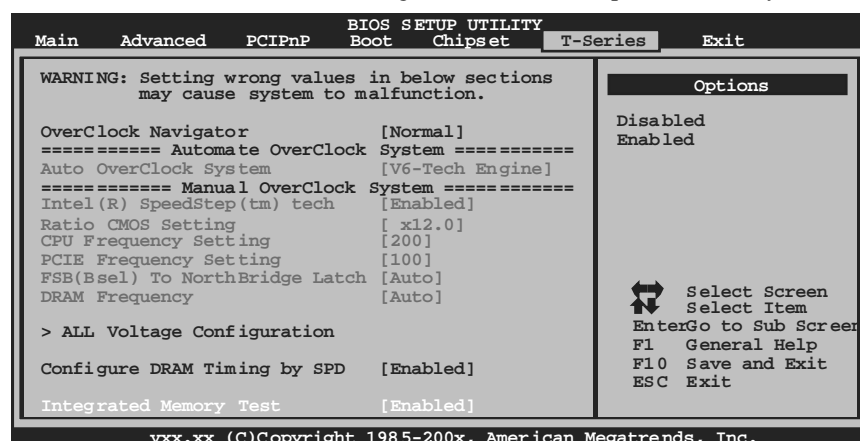
# T41-A7 BIOS Manual

## Integrated Memory Test

Integrated Memory Test allows users to test memory module compatibilities without additional device or software.

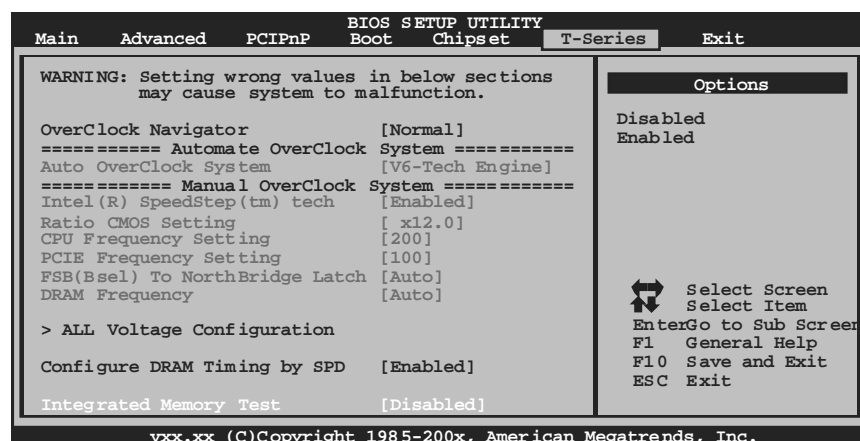
### Step 1:

This item is disabled on default; change it to “Enable” to precede memory test.



### Step 2:

When the process is done, change the setting back from “Enabled” to “Disabled” to complete the test.

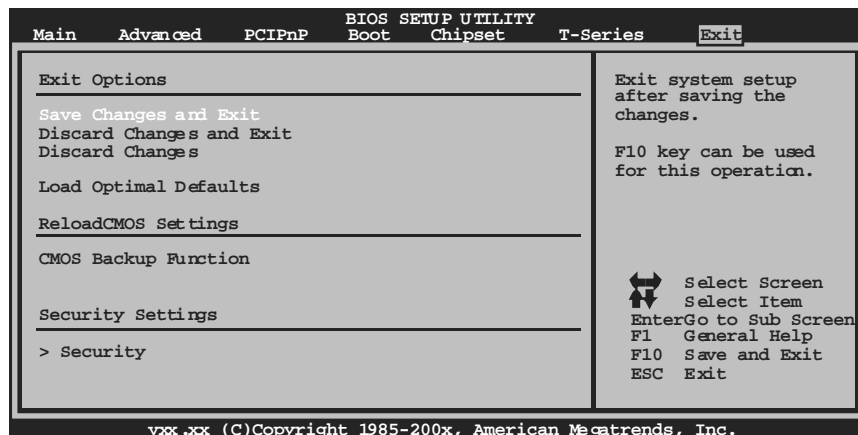


# T41-A7 BIOS Manual

---

## 7 Exit Menu

This menu allows you to load the optimal default settings, and save or discard the changes to the BIOS items.



### Save Changes and Exit

Save all configuration changes to CMOS RAM and exit setup.

### Discard Changes and Exit

Abandon all changes made during the current session and exit setup.

### Discard Changes

Abandon all changes made during the current session and restore the previously saved values.

### Load Optimal Defaults

This selection allows you to reload the BIOS when problem occurs during system booting sequence. These configurations are factory settings optimized for this system.

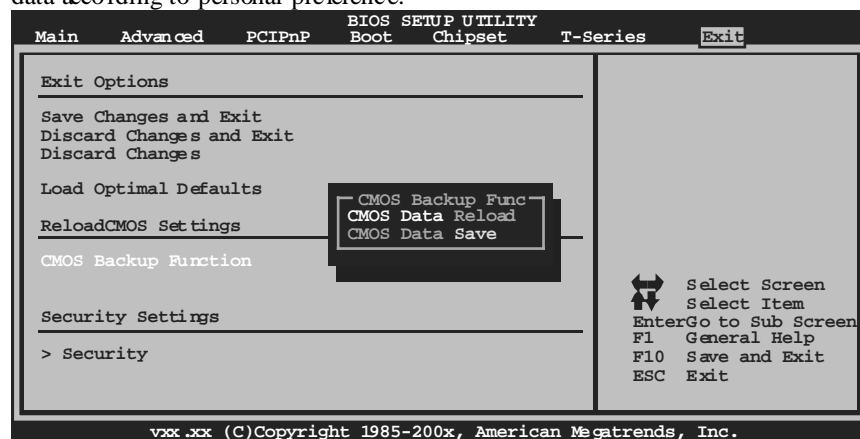
# T41-A7 BIOS Manual

## CMOS Backup Function

It allows users to save different CMOS settings into BIOS-ROM and reload any saved CMOS setting for customizing system configurations.

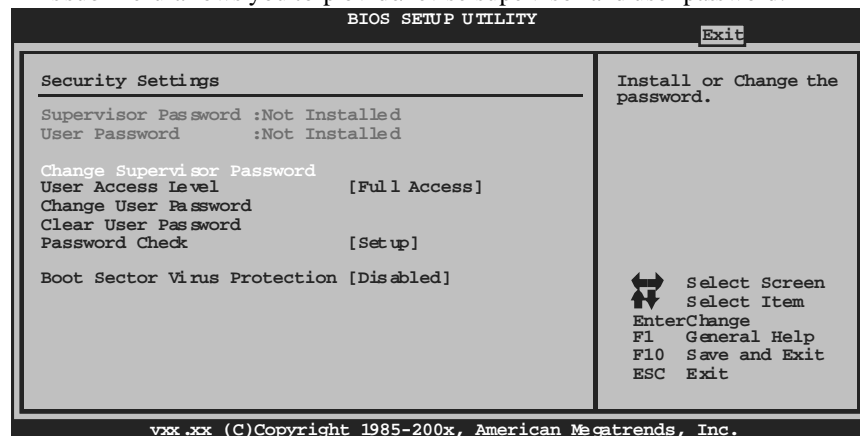
Moreover, users are able to save an ideal overclock setting during overclock operation.

There are 10 sets of record addresses in total, and users are able to name the CMOS data according to personal preference.



## Security

This sub-menu allows you to provide/revise supervisor and user password.



# ***T41-A7 BIOS Manual***

---

## **Change Supervisor Password**

Setting the supervisor password will prohibit everyone except the supervisor from making changes using the CMOS Setup Utility. You will be prompted with to enter a password.

## **User Access Level**

This item allows supervisor to set the user level.

Options: Full Access (Default) / No Access / View Only / Limited

## **Change User Password**

If the Supervisor Password is not set, then the User Password will function in the same way as the Supervisor Password. If the Supervisor Password is set and the User Password is set, the "User" will only be able to view configurations but will not be able to change them.

## **Clear User Password**

This item is for clearing user password.

## **Password Check**

This item is for setting the timing that checking password.

Options: Setup (Default) / Always

## **Boot Sector Virus Protection**

This option allows you to choose the VIRUS Warning feature that is used to protect the IDE Hard Disk boot sector. If this function is enabled and an attempt is made to write to the boot sector, BIOS will display a warning message on the screen and sound an alarm beep.

Options: Disabled (Default) / Enabled