

TP43E3 XE BIOS Manual

BIOS Setup	1
1 Main Menu.....	3
2 Advanced Menu.....	8
3 PCIPnP Menu.....	20
4 Boot Menu.....	23
5 Chipset Menu.....	26
6 O.N.E Menu.....	30
7 Exit Menu.....	41

TP43E3 XE BIOS Manual

BIOS Setup

Introduction

The purpose of this manual is to describe the settings in the AMI BIOS Setup program on this motherboard. The Setup program allows users to modify the basic system configuration and save these settings to CMOS RAM. The power of CMOS RAM is supplied by a battery so that it retains the Setup information when the power is turned off.

Basic Input-Output System (BIOS) determines what a computer can do without accessing programs from a disk. This system controls most of the input and output devices such as keyboard, mouse, serial ports and disk drives. BIOS activates at the first stage of the booting process, loading and executing the operating system. Some additional features, such as virus and password protection or chipset fine-tuning options are also included in BIOS.

The rest of this manual will guide you through the options and settings in BIOS Setup.

Plug and Play Support

This AMI BIOS supports the Plug and Play Version 1.0A specification.

EPA Green PC Support

This AMI BIOS supports Version 1.03 of the EPA Green PC specification.

ACPI Support

AMI ACPI BIOS support Version 1.0/2.0 of Advanced Configuration and Power interface specification (ACPI). It provides ASL code for power management and device configuration capabilities as defined in the ACPI specification, developed by Microsoft, Intel and Toshiba.

TP43E3 XE BIOS Manual

PCI Bus Support

This AMI BIOS also supports Version 2.3 of the Intel PCI (Peripheral Component Interconnect) local bus specification.

DRAM Support

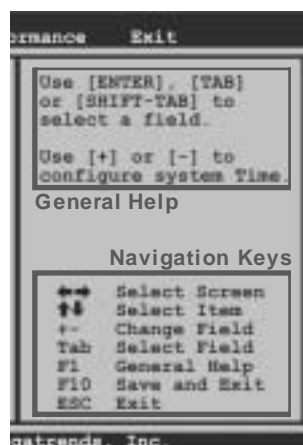
DDR3 SDRAM (Double Data Rate III Synchronous DRAM) is supported.

Supported CPUs

This AMI BIOS supports the Intel CPU.

Using Setup

When starting up the computer, press during the **Power-On Self-Test (POST)** to enter the BIOS setup utility. In the BIOS setup utility, you will see **General Help** description at the top right corner, and this is providing a brief description of the selected item. **Navigation Keys** for that particular menu are at the bottom right corner, and you can use these keys to select item and change the settings.



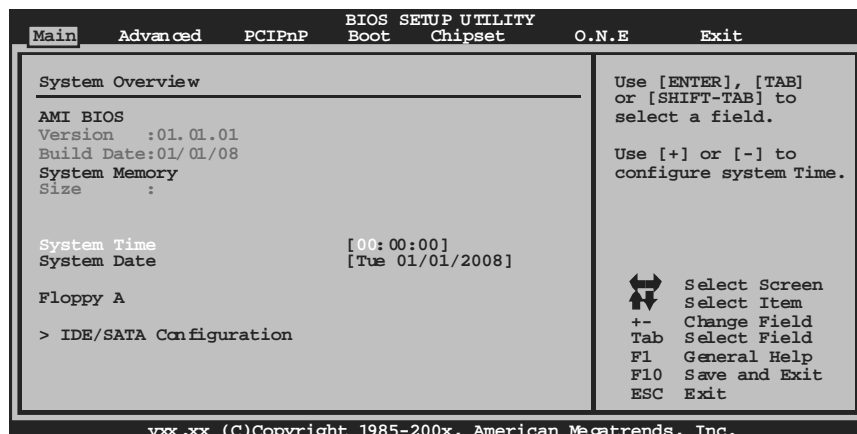
Notice

- The default BIOS settings apply for most conditions to ensure optimum performance of the motherboard. If the system becomes unstable after changing any settings, please load the default settings to ensure system's compatibility and stability. Use Load Setup Default under the Exit Menu.
- For better system performance, the BIOS firmware is being continuously updated. The BIOS information described in this manual is for your reference only. The actual BIOS information and settings on board may be slightly different from this manual.
- The content of this manual is subject to be changed without notice. We will not be responsible for any mistakes found in this user's manual and any system damage that may be caused by wrong-settings.

TP43E3 XE BIOS Manual

1 Main Menu

Once you enter AMI BIOS Setup Utility, the Main Menu will appear on the screen providing an overview of the basic system information.



AMI BIOS

Shows system information including BIOS version, built date, etc.

System Memory

Shows system memory size, VGA shard memory will be excluded.

System Time

Set the system internal clock.

System Date

Set the system date. Note that the 'Day' automatically changes when you set the date.

Floppy A

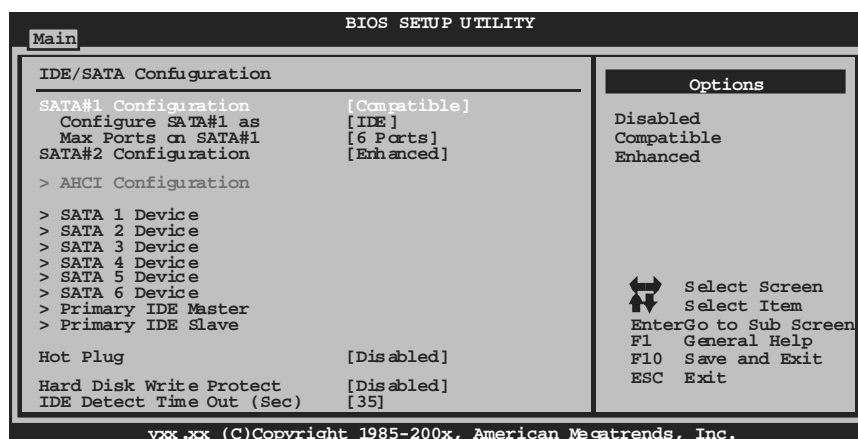
Select the type of floppy disk drive installed in your system.

Options: 360K, 5 1/4 in / 1.2M, 5 1/4 in / 720K, 3 1/2 in / 1.44M, 3 1/2 in / 2.88M, 3 1/2 in / Disabled

TP43E3 XE BIOS Manual

IDE/SATA Configuration

The BIOS will automatically detect the presence of IDE/SATA devices. There is a sub-menu for each IDE/SATA device. Select a device and press <Enter> to enter the sub-menu of detailed options.



SATA#1 Configuration

This item allows you to control the onboard SATA controller.

Options: Compatible (Default) / Disabled / Enhanced

Configure SATA#1 as

This item allows you to choose the SATA operation mode.

Options: IDE (Default) / AHCI

Max Ports on SATA#1

This item appears only when SATA mode is set to AHCI/RAID.

Options: 6 Ports (Default) / 4 Ports

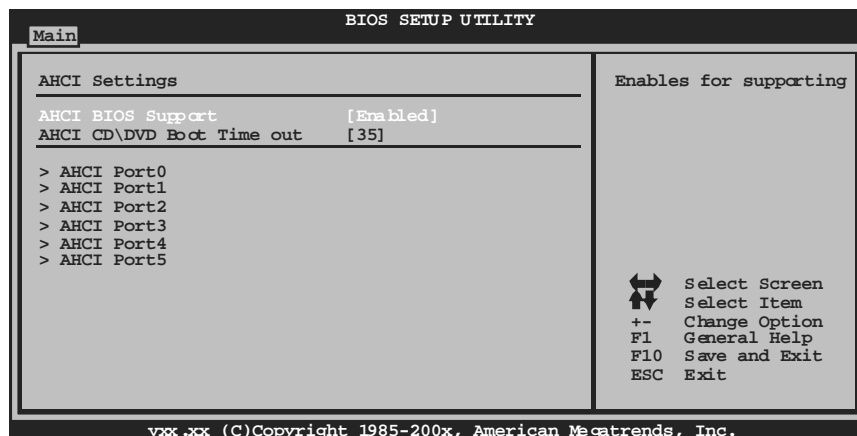
SATA#2 Configuration

This item allows you to control the onboard SATA controller.

Options: Enhanced (Default) / Disabled

TP43E3 XE BIOS Manual

AHCI Configuration



AHCI BIOS Support

This BIOS feature controls the AHCI function of the SATA controller.

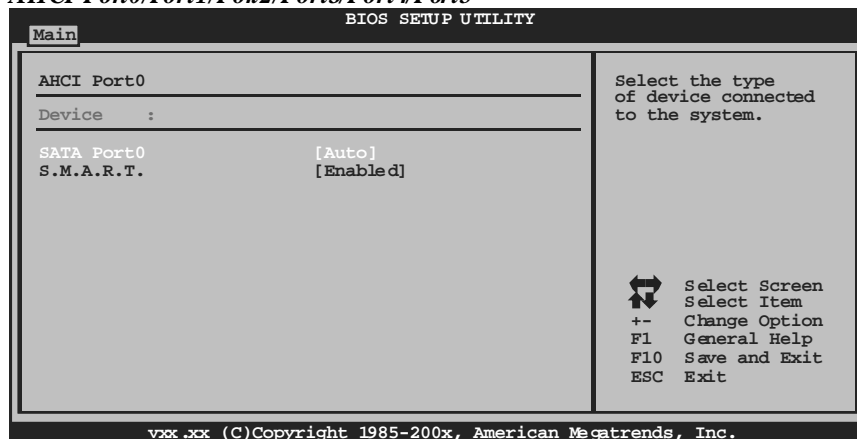
Options: Enabled (Default) / Disabled

AHCI CD/DVD Boot Time Out

This BIOS feature allows you to set the AHCI CD/DVD boot time out.

Options: 35 (Default) / 0 / 5 / 10 / 15 / 20 / 25 / 30

AHCI Port0/Port1/Port2/Port3/Port4/Port5



TP43E3 XE BIOS Manual

Device

This area shows the detected connected device.

SATA Port0/1/2/3/4/5

This item allows you to select the connected device type.

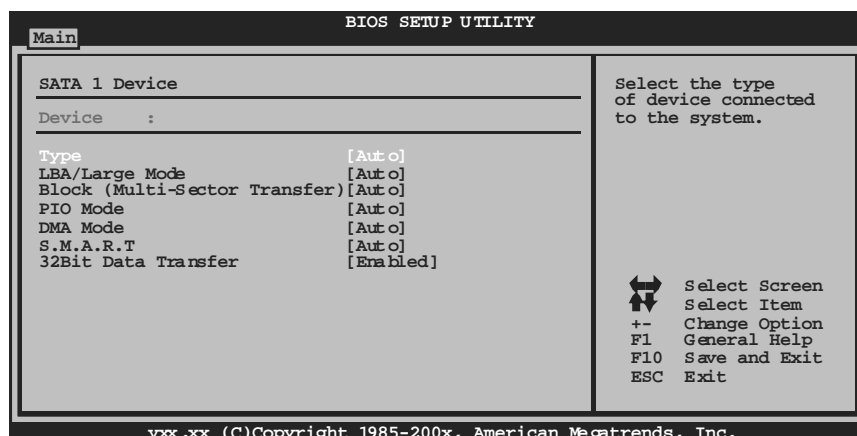
Options: Auto (Default)

S.M.A.R.T.

This item allows you to control the device S.M.A.R.T function.

Options: Enabled (Default) / Disabled

SATA 1/2/3/4/5/6 Device; Primary IDE Master/Slave



The BIOS detects the information and values of respective devices, and these information and values are shown below to the name of the sub-menu.

Type

Select the type of the IDE/SATA drive.

Options: Auto (Default) / CD/DVD / ARMD / Not Installed

LBA/Large Mode

Enable or disable the LBA mode.

Options: Auto (Default) / Disabled

Block (MultiSector Transfer)

Enable or disable multi-sector transfer.

Options: Auto (Default) / Disabled

TP43E3 XE BIOS Manual

PIO Mode

Select the PIO mode.

Options: Auto (Default) / 0 / 1 / 2 / 3 / 4

DMA Mode

Select the DMA mode.

Options: Auto (Default) / SWDMA0 ~ 2 / MWDMA0 ~ 2 / UDMA0 ~ 5

S.M.A.R.T

Set the Smart Monitoring, Analysis, and Reporting Technology.

Options: Auto (Default) / Disabled / Enabled

32Bit Data Transfer

Enable or disable 32-bit data transfer.

Options: Enabled (Default) / Disabled

Hot Plug

This item allows you to control the device Hot-Plug function. The Hot-Plug function is only allowed in AHCI mode.

Options: Disabled (Default) / Enabled

Hard Disk Write Protect

Disable or enable device write protection. This will be effective only if the device is accessed through BIOS.

Options: Disabled (Default) / Enabled

IDE Detect Time Out (Sec)

Select the time out value for detecting IDE/SATA devices.

Options: 35 (Default) / 30 / 25 / 20 / 15 / 10 / 5 / 0

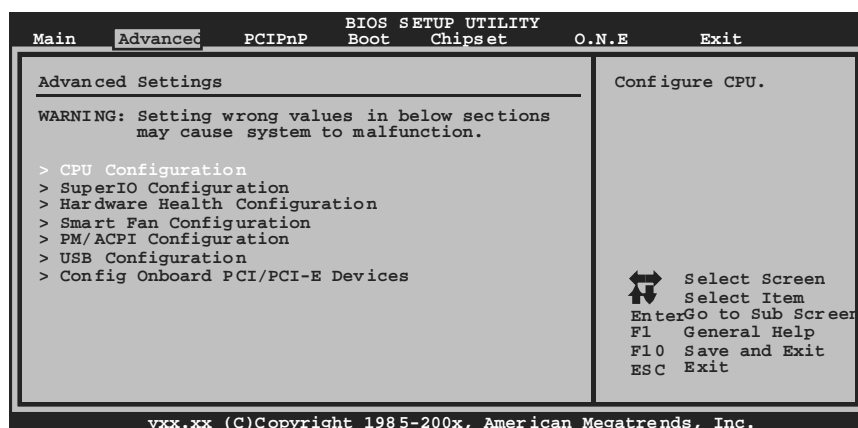
TP43E3 XE BIOS Manual

2 Advanced Menu

The Advanced Menu allows you to configure the settings of CPU, Super I/O, Power Management, and other system devices.

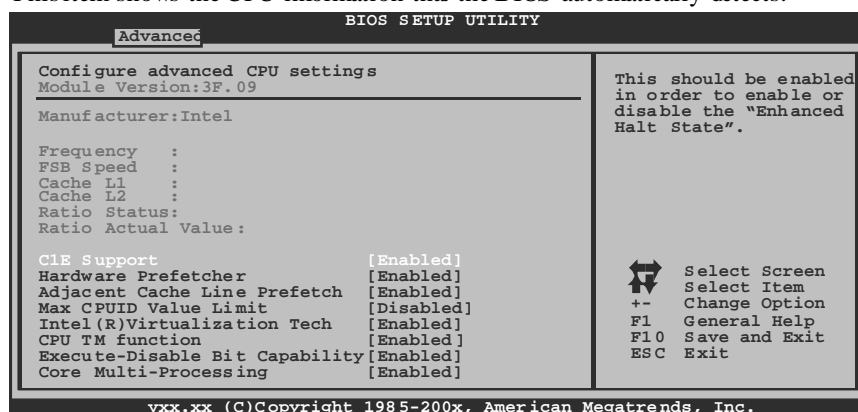
Notice

- Beware of that setting inappropriate values in items of this menu may cause system to malfunction.



CPU Configuration

This item shows the CPU information that the BIOS automatically detects.



TP43E3 XE BIOS Manual

C1E Support

C1E is “Enhanced Halt State” function, this function helps to save power and decrease heat by lowering CPU frequency while the processor is not working.

Options: Enabled (Default) / Disabled

Hardware Prefetcher

The processor has a hardware prefetcher that automatically analyzes its requirements and prefetches data and instructions from the memory into the Level 2 cache that are likely to be required in the near future. This reduces the latency associated with memory reads.

Options: Enabled (Default) / Disabled

Adjacent Cache Line Prefetch

The processor has a hardware adjacent cache line prefetch mechanism that automatically fetches an extra 64-byte cache line whenever the processor requests for a 64-byte cache line. This reduces cache latency by making the next cache line immediately available if the processor requires it as well.

Options: Enabled (Default) / Disabled

Max CPUID Value Limit

When the computer is booted up, the operating system executes the CPUID instruction to identify the processor and its capabilities. Before it can do so, it must first query the processor to find out the highest input value CPUID recognizes. This determines the kind of basic information CPUID can provide the operating system.

Options: Disabled (Default) / Enabled

Intel(R) Virtualization Tech

Virtualization Technology can virtually separate your system resource into several parts, thus enhance the performance when running virtual machines or multi interface systems.

Options: Enabled (Default) / Disabled

CPU TM Function

The CPU TM Function is to throttle the clock speed of higher speed Prescott's to help keep them cool.

Options: Disabled (Default) / Enabled

TP43E3 XE BIOS Manual

Execute-Disable Bit Capability

This item allows you to configure the Execute Disabled Bit function, which protects your system from buffer overflow attacks.

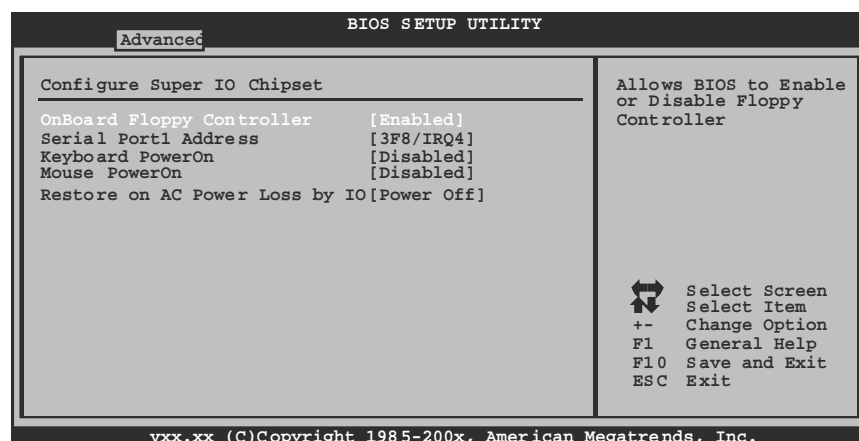
Options: Enabled (Default) / Disabled

Core Multi-Processing

This item allows multi-processing function for multi-core processors.

Options: Enabled (Default) / Disabled

SuperIO Configuration



Onboard Floppy Controller

Select enabled if your system has a floppy disk controller (FDC) installed on the system board and you wish to use it. If you installed another FDC or the system uses no floppy drive, select disabled in this field.

Options: Enabled (Default) / Disabled

Serial Port1 Address

Select an address and corresponding interrupt for the first and second serial ports.

Options: 3F8/IRQ4 (Default) / 2F8/IRQ3 / 3E8/IRQ4 / 2E8/IRQ3 / Disabled

TP43E3 XE BIOS Manual

Keyboard PowerOn

This item allows you to control the keyboard power on function.

Options: Disabled (Default) / Specific Key / Stroke Key/ Any Key

Specific Key Enter

This item will show only when Keyboard PowerOn is set "Specific Key."

Stroke Keys Selected

This item will show only when Keyboard PowerOn is set "Stroke Key."

Options: Ctrl+F1 (Default) / Wake Key / Power Key / Ctrl+F2 / Ctrl+F3 /
Ctrl +F4 / Ctrl+F5 / Ctrl+F6

Mouse PowerOn

This item allows you to control the mouse power on function.

Options: Disabled (Default) / Enabled

Restore on AC Power Loss by IO

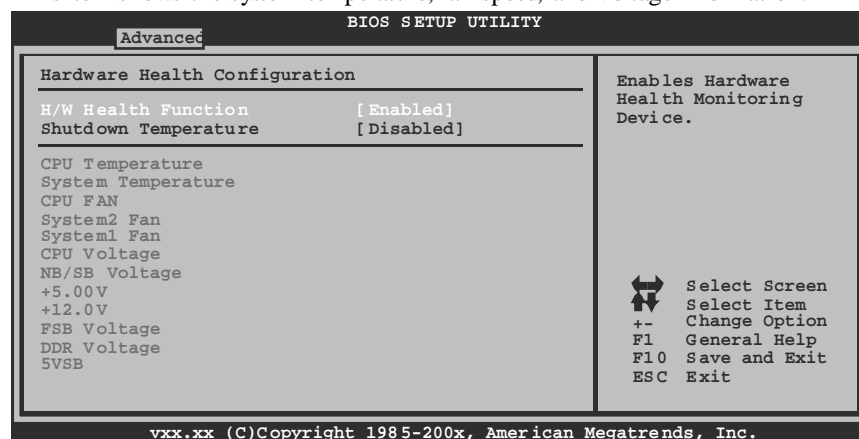
This setting specifies how your system should behave after a power fail or interrupts occurs. By choosing Disabled will leave the computer in the power off state. Choosing Enabled will restore the system to the status before power failure or interrupt occurs.

Options: Power Off (Default) / Power ON / Last State

TP43E3 XE BIOS Manual

Hardware Health Configuration

This item shows the system temperature, fan speed, and voltage information.



H/W Health Function

If with a monitoring system, the system will show PC health status during POST stage.

Options: Enabled (Default) / Disabled

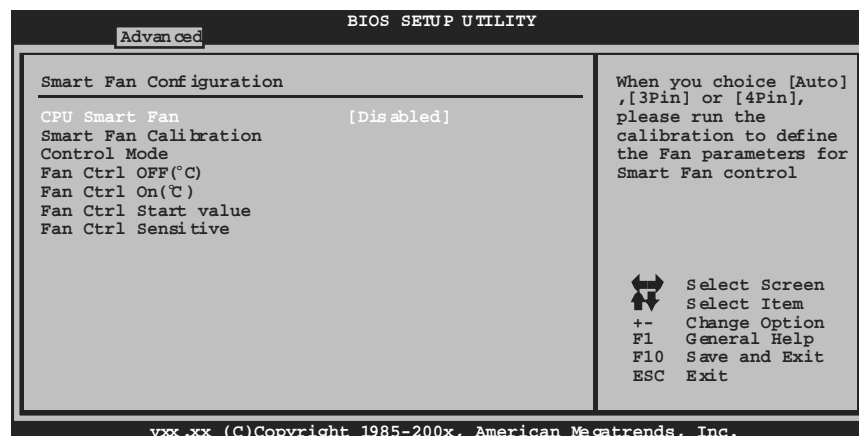
Shutdown Temperature

This item allows you to set up the CPU shutdown Temperature. This item is only effective under Windows 98 ACPI mode.

Options: Disabled (Default) / 60°C/140°F / 65°C/149°F / 70°C/158°F / 75°C/167°F / 80°C/176°F / 85°C/185°F / 90°C/194°F

TP43E3 XE BIOS Manual

Smart Fan Configuration



CPU Smart Fan

This item allows you to control the CPU Smart Fan function.

Options: Disabled (default) / Auto

Smart Fan Calibration

Choose this item and then the BIOS will auto test and detect the CPU/System fan functions and show CPU/System fan speed.

Control Mode

This item provides several operation modes of the fan.

Options: Quiet / Performance / Manual

Fan Ctrl OFF(°C)

If the CPU/System Temperature is lower than the set value, FAN will turn off.

Options: 0~127 (°C) (Interval: 1°C)

Fan Ctrl On(°C)

CPU/System fan starts to work under smart fan function when arrive this set value.

Options: 0~127 (°C) (Interval: 1°C)

TP43E3 XE BIOS Manual

Fan Ctrl Start Value

When CPU/System temperature arrives to the set value, the CPU/System fan will work under Smart Fan Function mode.

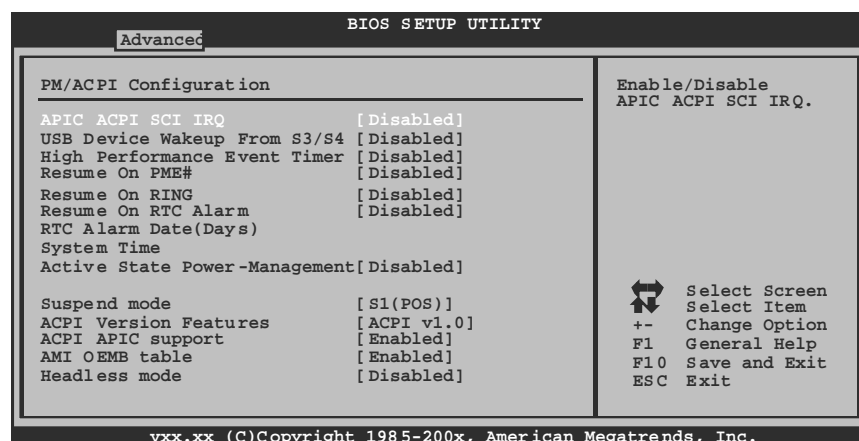
Options: 0~127 (Interval: 1)

Fan Ctrl Sensitive

Increasing the value will raise the speed of CPU/System fan.

Options: 1~127 (Interval: 1)

PM/ACPI Configuration



APIC ACPI SCI IRQ

Options: Disabled (Default) / Enabled

USB Device Wakeup from S3/S4

This item allows you to enable or disabled the USB resume from S3/S4 function.

Options: Disabled (Default) / Enabled

High Performance Event Timer

This item allows you to enable or disabled the HPET.

Options: Disabled (Default) / Enabled

TP43E3 XE BIOS Manual

HPET Memory Address

This item allows you to set the memory address of HPET.

Options: FED00000h (Default) / FED01000h / FED02000h / FED03000h

Resume On PME#

When you select Enabled, a PME signal from PCI card returns the system to Full ON state.

For this function to work, you may need a LAN add-on card which supports the Wake on LAN function. Set the Wake on LAN (WOL) jumper on motherboard to enable if applicable.

Options: Disabled (Default) / Enabled

Resume On RING

This item allows you control the wake on ring function.

Options: Disabled (Default) / Enabled

Resume On RTC Alarm

When “Enabled”, you can set the date and time at which the RTC (real-time clock) alarm awakens the system from Suspend mode.

Options: Disabled (Default) / Enabled

RTC Alarm Date (Days)

You can choose which date the system will boot up.

System Time

You can choose the system boot up time, input hour, minute and second to specify.

Active State Power-Management

This item sets the ASPM configuration for the PCI Express devices before the operating system boots. This function is for OS which does not support ASPM.

Options: Disabled (Default) / Enabled

TP43E3 XE BIOS Manual

Suspend mode

The item allows you to select the suspend type under the ACPI operating system.

Options: S1 (POS) (Default) Power on Suspend
 S3 (STR) Suspend to RAM
 Auto POS+STR

ACPI Version Features

The item allows you to select the version of ACPI.

Options: ACPI v1.0 (Default) / ACPI v2.0 / ACPI v3.0

ACPI APIC support

This item is used to enable or disable the motherboard's APIC (Advanced Programmable Interrupt Controller). The APIC provides multiprocessor support, more IRQs and faster interrupt handling.

Options: Enabled (Default) / Disabled

AMI OEMB table

Set this value to allow the ACPI BIOS to add a pointer to an OEMB table in the Root System Description Table (RSDT) table.

Options: Enabled (Default) / Disabled

Headless mode

This is a server-specific feature. A headless server is one that operates without a keyboard, monitor or mouse. To run in headless mode, both BIOS and operating system (e.g. Windows Server 2003) must support headless operation.

Options: Disabled (Default) / Enabled

TP43E3 XE BIOS Manual

USB Configuration

This item shows the USB controller and using USB device information.



Legacy USB Support

This item determines if the BIOS should provide legacy support for USB devices like the keyboard, mouse, and USB drive. This is a useful feature when using such USB devices with operating systems that do not natively support USB (e.g. Microsoft DOS or Windows NT).

Options: Enabled (Default) / Disabled

USB 2.0 Controller Mode

This item allows you to select the operation mode of the USB 2.0 controller.

Options: HiSpeed (Default) USB 2.0-480Mbps
FullSpeed USB 1.1-12Mbps


BIOS EHCI Hand-Off

This item allows you to enable support for operating systems without an EHCI hand-off feature.

Options: Enabled (Default) / Disabled

TP43E3 XE BIOS Manual

USB Mass Storage Device Configuration

BIOS SETUP UTILITY	
Advanced	
USB Mass Storage Device Configuration	
USB Mass Storage Reset Delay [20 Sec]	
Device #	
Emulation Type	[Auto]
Number of seconds POST waits for the USB mass storage device after start unit command.	
	
Select Screen	
Select Item	
+- Change Option	
F1 General Help	
F10 Save and Exit	
ESC Exit	
vxx.xx (C)Copyright 1985-200x, American Megatrends, Inc.	

USB Mass Storage Reset Delay

This item allows you to set the reset delay for USB mass storage device.

Options: 20 Sec (Default) / 10 Sec / 30 Sec / 40 Sec

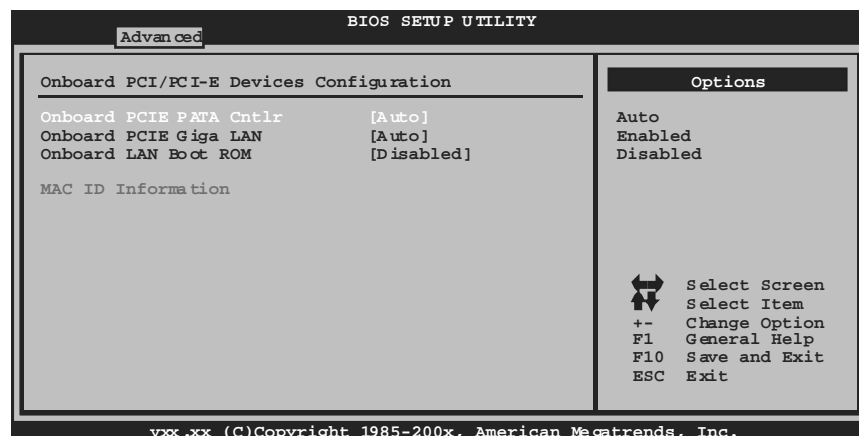
Emulation Type

This item allows you to select the emulation type of the USB mass storage device.

Options: Auto (Default) / Floppy / Forced FDD / Hard Disk / CDROM

TP43E3 XE BIOS Manual

Config Onboard PCI/PCI-E Devices



Onboard PCIE PATA Cntlr

This item allows you to control the onboard IDE controller.

Options: Auto (Default) / Enabled / Disabled

Onboard PCIE Giga LAN

This item allows you to control the onboard LAN.

Options: Auto (Default) / Enabled / Disabled

Onboard LAN Boot Rom

This item allows you to select the Onboard LAN Boot ROM.

Options: Disabled (Default) / Enabled

MAC ID Information

This item shows the LAN MAC ID.


TP43E3 XE BIOS Manual

3 PCIPnP Menu

This section describes configuring the PCI bus system. PCI, or Personal Computer Interconnect, is a system which allows I/O devices to operate at speeds nearing the speed of the CPU itselfuses when communicating with its own special components.

Notice

- Beware of that setting inappropriate values in items of this menu may cause system to malfunction.

Main	Advanced	PCIPnP	BIOS SETUP UTILITY Boot Chipset	O.N.E	Exit
Advanced PCI/PnP Settings					
WARNING: Setting wrong values in below sections may cause system to malfunction.					
Clear NVRAM [No]			Clear NVRAM during System Boot.		
Plug & Play O/S [No]					
PCI Latency Timer [64]					
Allocate IRQ to PCI VGA [Yes]					
Palette Snooping [Disabled]					
PCI IDE BusMaster [Enabled]					
OffBoard PCI/ISA IDE Card [Auto]					
IRQ3 [Available]					
IRQ4 [Available]					
IRQ5 [Available]					
IRQ7 [Available]					
IRQ9 [Available]					
			 Select Screen Select Item +- Change Option F1 General Help F10 Save and Exit ESC Exit		
vxx.xx (C)Copyright 1985-200x, American Megatrends, Inc.					

Clear NVRAM

This item allows you to clear the data in the NVRAM (CMOS) by selecting “Yes”.

Options: No (Default) / Yes

Plug & Play OS

When set to YES, BIOS will only initialize the PnP cards used for the boot sequence (VGA, IDE, SCSI). The rest of the cards will be initialized by the PnP operating system like Window™ 95. When set to NO, BIOS will initialize all the PnP cards. For non-PnP operating systems (DOS, Netware™), this option must set to NO.

Options: No (Default) / Yes

TP43E3 XE BIOS Manual

PCI Latency Timer

This item controls how long a PCI device can hold the PCI bus before another takes over. The longer the latency, the longer the PCI device can retain control of the bus before handing it over to another PCI device.

Options: 64 (Default) / 32 / 96 / 128 / 160 / 192 / 224 / 248

Allocate IRQ to PCI VGA

This item allows BIOS to choose a IRQ to assign for the PCI VGA card.

Options: Yes (Default) / No

Palette Snooping

Some old graphic controllers need to “snoop” on the VGA palette and then map it to their display as a way to provide boot information and VGA compatibility. This item allows such snooping to take place.

Options: Disabled (Default) / Enabled

PCI IDE BusMaster

This item is a toggle for the built-in driver that allows the onboard IDE controller to perform DMA (Direct Memory Access) transfers.

Options: Enabled (Default) / Disabled

OffBoard PCI/ISA IDE Card

This item is for any other non-onboard PCI/ISA IDE controller adapter.

Options: Auto (Default) / PCI Slot 1~6

IRQ3/4/5/7/9/10/11/14/15

These items will allow you to assign each system interrupt a type, depending on the type of device using the interrupt. The option “Available” means the IRQ is going to assign automatically.

Options: Available (Default) / Reserved

DMA Channel 0/1/3/5/6/7

These items will allow you to assign each DMA channel a type, depending on the type of device using the channel. The option “Available” means the channel is going to assign automatically.

Options: Available (Default) / Reserved

TP43E3 XE BIOS Manual

Reserved Memory Size

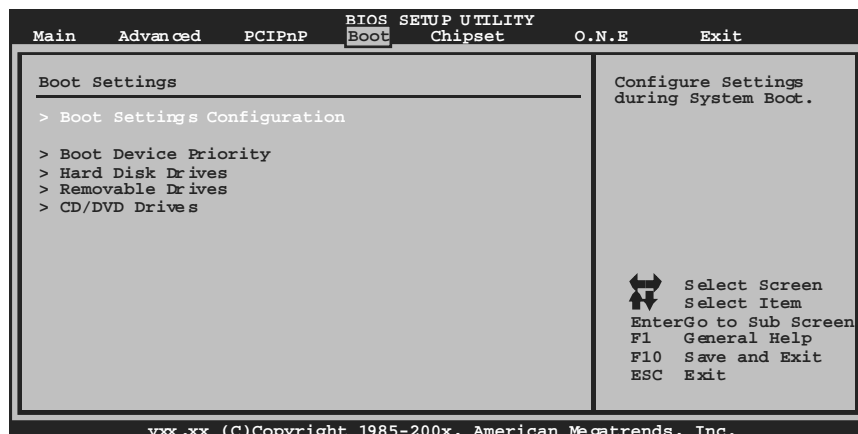
This item allows BIOS to reserve certain memory size for specific PCI device.

Options: Disabled (Default) / 16K / 32K / 64K

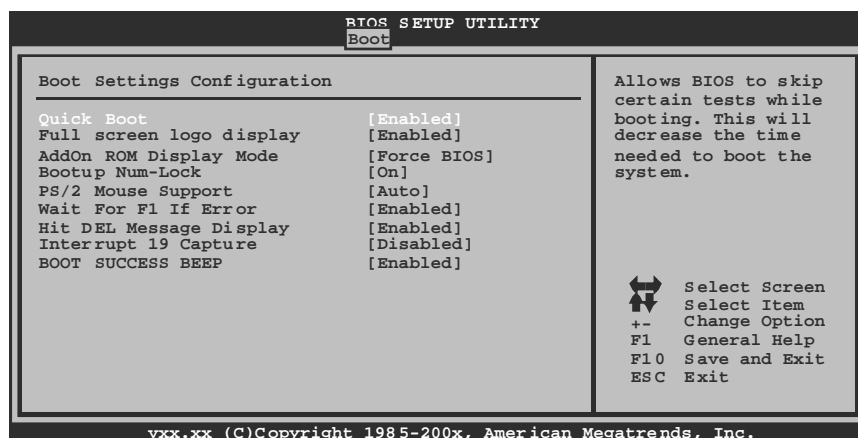
TP43E3 XE BIOS Manual

4 Boot Menu

This menu allows you to setup the system boot options.



Boot Settings Configuration



Quick Boot

Enabling this option will cause an abridged version of the Power On Self-Test (POST) to execute after you power up the computer.

Options: Enabled (Default) / Disabled

TP43E3 XE BIOS Manual

Full Screen LOGO Display

This item allows you to enable/disable Full Screen LOGO Show function.
Options: Enabled (Default) / Disabled

AddOn ROM Display Mode

This item sets the display mode for option ROM.
Options: Force BIOS (Default) / Keep Current

Bootup Num-Lock

Selects the NumLock State after the system switched on.
Options: ON (Default) / OFF

PS/2 Mouse Support

This BIOS feature determines if the BIOS should reserve IRQ12 for the PS/2 mouse or allow other devices to make use of this IRQ.
Options: Auto (Default) / Enabled / Disabled

Wait for 'F1' If Error

This BIOS feature controls the system's response when an error is detected during the boot sequence.
Options: Enabled (Default) / Disabled

Hit 'DEL' Message Display

This BIOS feature allows you to control the display of the Hit "DEL" to enter Setup message during memory initialization.
Options: Enabled (Default) / Disabled

Interrupt 19 Capture

Interrupt 19 is the software interrupt that handles the boot disk function. When set to Enabled, this item allows the option ROMs to trap interrupt 19.
Options: Disabled (Default) / Enabled

BOOT SUCCESS BEEP

When this item is set to Enabled, BIOS will let user know boot success with beep.
Options: Enabled (Default) / Disabled

TP43E3 XE BIOS Manual

Boot Device Priority

Items in this sub-menu specify the boot device priority sequence from the available devices. The number of device items that appears on the screen depends on the number of devices installed in the system.

Hard Disk Drives

The BIOS will attempt to arrange the hard disk boot sequence automatically. You can also change the booting sequence. The number of device items that appears on the screen depends on the number of devices installed in the system.

Removable Drives

The BIOS will attempt to arrange the removable drive boot sequence automatically. You can also change the booting sequence. The number of device items that appears on the screen depends on the number of devices installed in the system.

CD/DVD Drives

The BIOS will attempt to arrange the CD/DVD drive boot sequence automatically. You can also change the booting sequence. The number of device items that appears on the screen depends on the number of devices installed in the system.

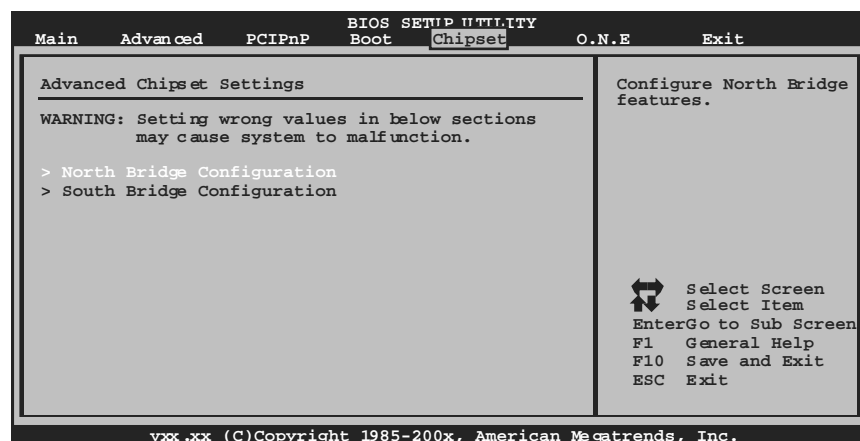
TP43E3 XE BIOS Manual

5 Chipset Menu

This submenu allows you to configure the specific features of the chipset installed on your system. This chipset manage bus speeds and access to system memory resources, such as DRAM. It also coordinates communications with the PCI bus.

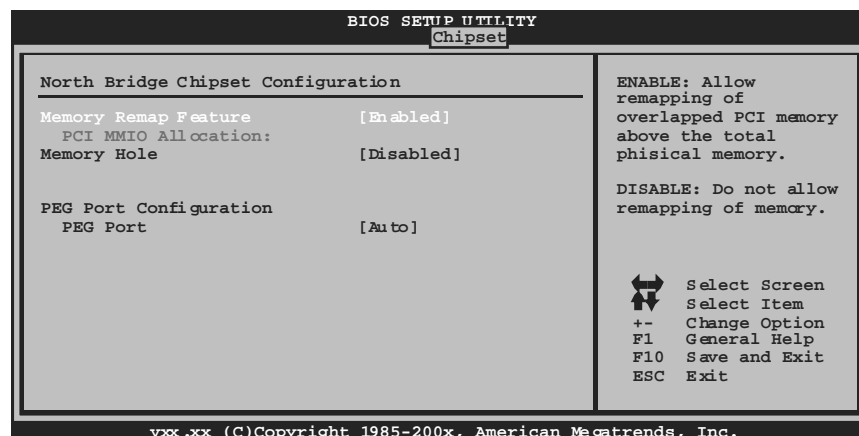
Notice

- Beware of that setting inappropriate values in items of this menu may cause system to malfunction.



TP43E3 XE BIOS Manual

North Bridge Configuration



Memory Remap Feature

This item allows you to enable or disable the remapping of the overlapped PCI memory above the total physical memory. Only 64-bit OS supports this function.

Options: Enabled (Default) / Disabled

Memory Hole

You can reserve this area of system memory for ISA adapter ROM. When this area is reserved it cannot be cached. Check the user information of peripherals that need to use this area of system memory for the memory requirements.

Options: Disabled (Default) / 15M-16M

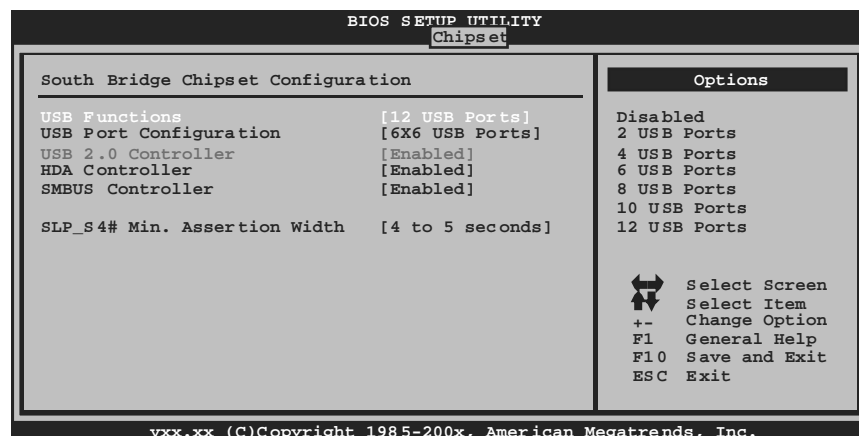
PEG Port

This BIOS feature is a toggle that enables or disables the PCI Express port.

Options: Auto (Default) / Disabled

TP43E3 XE BIOS Manual

South Bridge Configuration



USB Functions

The item determines the number of functional USB port.

Options: 12 USB Ports (Default) / 10 USB Ports / 8 USB Ports / 6 USB Ports / 4 USB Ports / 2 USB Ports / Disabled

USB Port Configuration

Options: 6X6 USB Ports (Default) / 8X4 USB Ports

USB 2.0 Controller

This entry is to enable/disable EHCI controller only. This Bios itself may/may not have high speed USB support. If the Bios has high speed USB support built in, the support will be automatically turn on when high speed device were attached.

Options: Enabled (Default) / Disabled

HDA Controller

This item allows you to control the HD Audio support.

Options: Enabled (Default) / Disabled

TP43E3 XE BIOS Manual

SMBUS Controller

This BIOS feature controls the I/O buffers for the SMBus.

Options: Enabled (Default) / Disabled

SLP_S4# Min. Assertion Width

Options: 4 to 5 seconds (Default) / 3 to 4 seconds / 2 to 3 seconds / 1 to 2 seconds

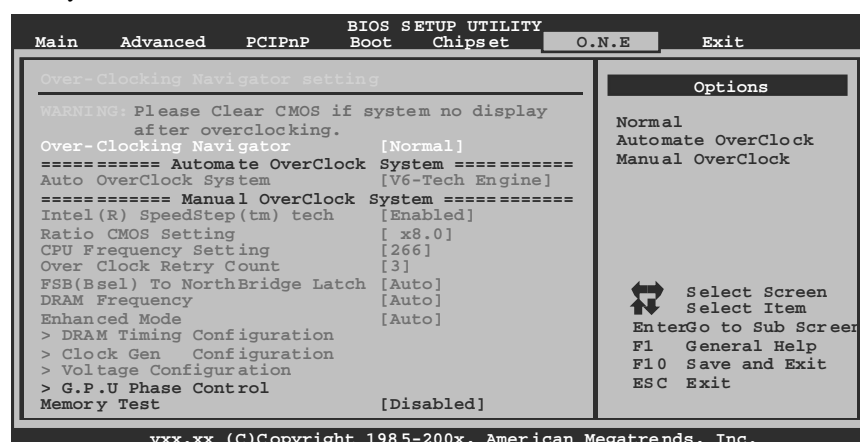
TP43E3 XE BIOS Manual

6 O.N.E Menu

This submenu allows you to change voltage and clock of various devices.
(However, we suggest you to use the default setting. Changing the voltage and clock improperly may damage the device.)

Notice

- Beware of that setting inappropriate values in items of this menu may cause system to malfunction.



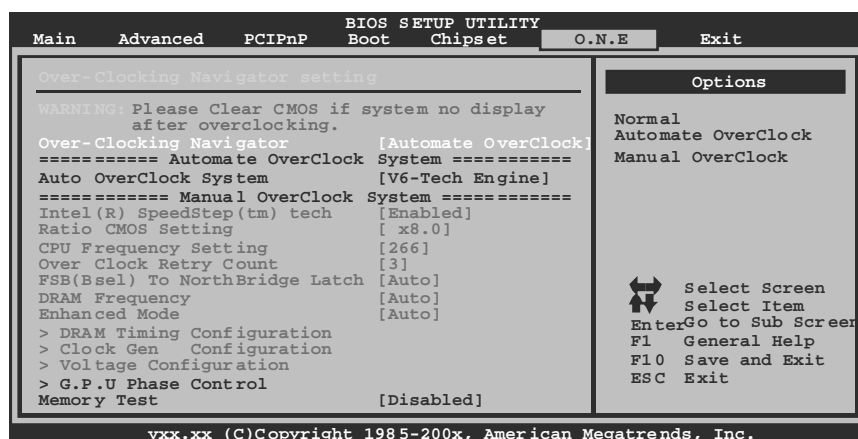
OverClock Navigator

OverClock .Navigator is designed for beginners in overclock field.
Based on many test and experiments from Biostar Engineer Team, OverClock Navigator provides 3 default overclock configurations that are able to raise the system performance.

Options: Normal (Default) / Automate OverClock / Manual OverClock

TP43E3 XE BIOS Manual

Auto OverClock System



The Overclock Navigator provides 3 different engines helping you to overclock your system. These engines will boost your system performance to different level.

Options:

V6 Tech Engine

This engine will make a good over-clock performance.

V8 Tech Engine

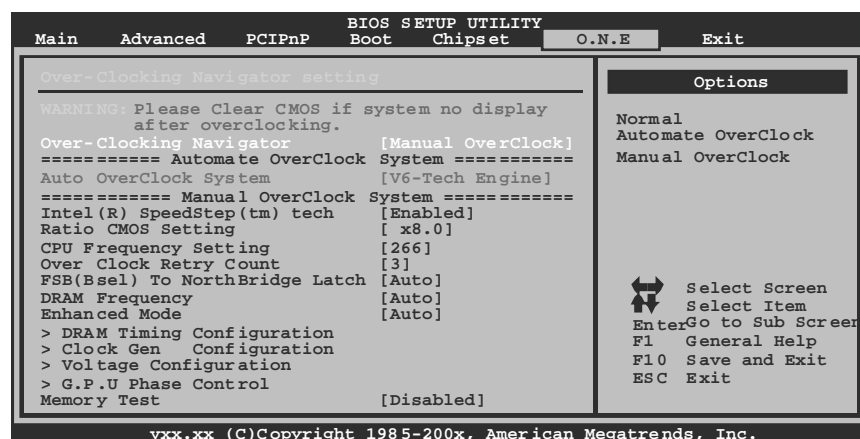
This engine will make a better over-clock performance.

V12 Tech Engine

This engine will make a best over-clock performance.

TP43E3 XE BIOS Manual

Manual Overclock System (M.O.S.)



MOS is designed for experienced overclock users.
It allows users to customize personal overclock setting.

Intel(R) SpeedStep(tm) Tech

This item allows you to enable SpeedStep technology for better power saving. SpeedStep is a technology built into some Intel processors that allows the clock speed of the processor to be dynamically changed by software.
Options: Enabled (Default) / Disabled

Ratio CMOS Setting

This item allows you to set the CPU ratio frequency.
Options: x6.0 / x7.0 / x8.0

CPU Frequency Setting

This item allows you to select the CPU Frequency.
Options: Min= 100 MHz; Max= 800 MHz

Over Clock Retry Count

This item allows you to set the overclock fail retry times.
Options: 3 (Default) / Min= 1; Max= 8

TP43E3 XE BIOS Manual

FSB(Bsel) To NorthBridge Latch

This item allows you to select the FSB Frequency.

Options: Auto (Default) / FSB 800 / FSB 1066 / FSB 1333 / FSB 1600

DRAM Frequency

This item allows you to control the Memory Clock.

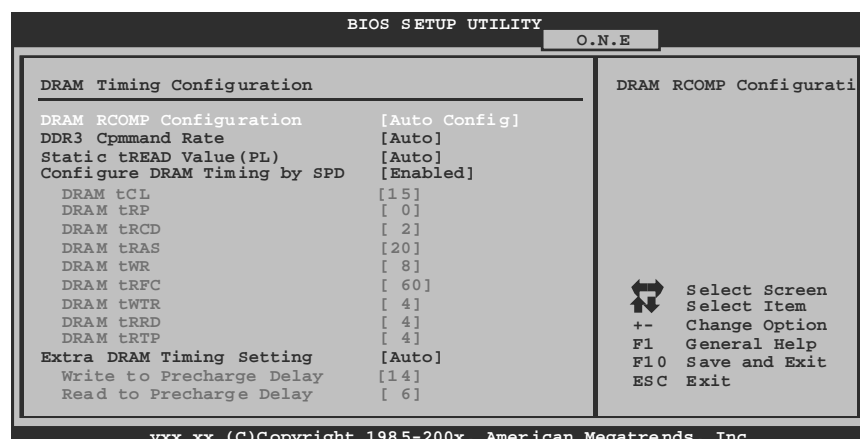
Options: Auto (Default) / DDR3 533Mhz / DDR3 638Mhz / DDR3 710Mhz /
DDR3 800Mhz / DDR3 851MHz / DDR3 1066 MHz

Enhanced Mode

This item allows you to control the DDR3 RAM enhanced mode.

Options: Auto (Default) / Disabled / Enabled

DRAM Timing Configuration



DRAM RCOMP Configuration

This item allows you to select the configuration mode of DRAM RCOMP.

Options: Auto Config (Default) / Configuration 1 ~ 8

DDR3 Command Rate

This item allows you to select command rate of DDR3.

Options: Auto (Default) / 1T / 2T

TP43E3 XE BIOS Manual

Static tREAD Value (PL)

This item allows you to select the tREAD control. Decrease to improve performance; increase to improve stability.

Options: Auto (Default) / 1T ~ 31T

Configure DRAM Timing by SPD

Options: Enabled (Default) / Disabled

DRAM tCL

Options: 15 (Default)

DRAM tRP

Options: 0 (Default)

DRAM tRCD

Options: 2 (Default)

DRAM tRAS

Options: 20 (Default)

DRAM tWR

Options: 8 (Default)

DRAM tRFC

Options: 60 (Default)

DRAM tWTR

Options: 4 (Default)

DRAM tRRD

Options: 4 (Default)

TP43E3 XE BIOS Manual

DRAM tRTP

Options: 4 (Default)

Extra DRAM Timing Setting

Options: Auto (Default) / Manual

Write to Precharge Delay

Options: 14 (Default)

Read to Precharge Delay

Options: 6 (Default)

PrechargeAll to Act Delay

Options: 2 (Default)

PrechargeAll —>Refresh Delay

Options: 2 (Default)

R-to-W Delay

Options: 9 (Default)

R-to-R Delay (Same Rank)

Options: 4 (Default)

W-to-W Delay (Same Rank)

Options: 4 (Default)

W-to-R Delay (Same Rank)

Options: 10 (Default)

TP43E3 XE BIOS Manual

R-to-R Delay(Diff Rank)

Options: 9 (Default)

W-to-R Delay (Diff Rank)

Options: 7 (Default)

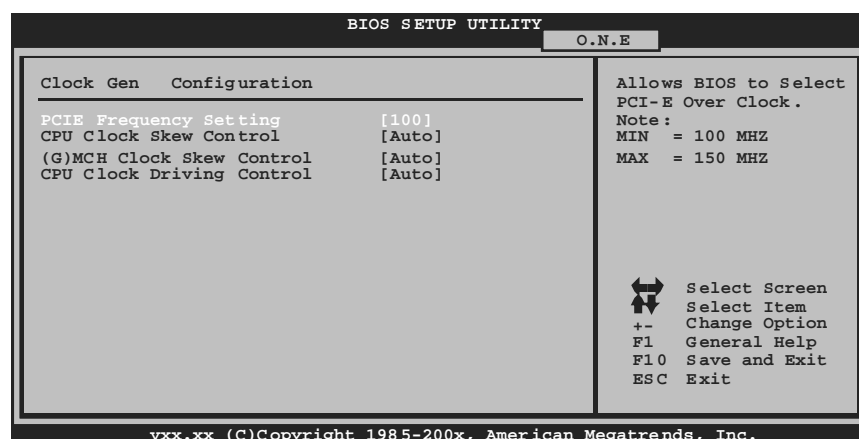
W-to-W Delay (Diff Rank)

Options: 7 (Default)

Refresh Counter

Options: Auto (Default) / 2600T / 3120T / 417T / 5200T

Clock Gen Configuration



PCIE Frequency Setting

This item allows you to select the PCIE dock control

Options: 100 MHz (Default) / Min=100 MHz; Max=150MHz

TP43E3 XE BIOS Manual

CPU Clock Skew Control

Options: Auto (Default) / 100ps ~ 1500ps (Interval: 100ps)

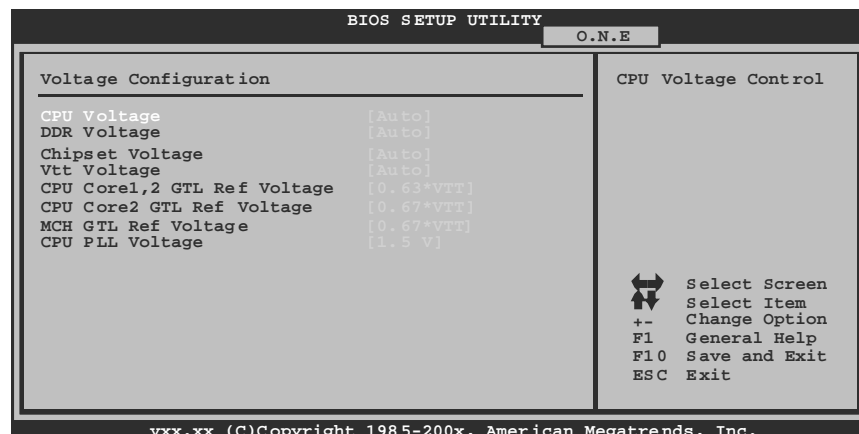
(G)MCH Clock Skew Control

Options: Auto (Default) / 100ps ~ 1500ps (Interval: 100ps)

CPU Clock Driving Control

Options: Auto (Default) / 700mV ~ 1000mV (Interval: 100mV)

Voltage Configuration



CPU Voltage

This item allows you to select CPU Voltage Control.

Options: Default (Default) / -0.050V ~ +0.1300V

DDR Voltage

This item allows you to select DDR Voltage Control.

Options: Auto (Default) / +0.050V ~ +1.850V

TP43E3 XE BIOS Manual

Chipset Voltage

This item allows you to select Chipset Voltage Control.

Options: Auto (Default) / +0.10V / +0.20V / +0.30V

Vtt Voltage

This item allows you to select Vtt Voltage Control.

Options: Auto (Default) / +0.10V / +0.20V / +0.30V

CPU Core1,2 GTL Ref Voltage

This item allows you to select CPU Core1 GTL Ref Voltage Control.

Options: 0.63*VTT (Default) / 0.67*VTT / 0.61*VTT / 0.58*VTT

CPU Core2 GTL Ref Voltage

This item allows you to select CPU Core2 GTL Ref Voltage Control.

Options: 0.67*VTT (Default) / 0.69*VTT / 0.63*VTT / 0.61*VTT

MCH GTL Ref Voltage

This item allows you to select MCH GTL Ref Voltage Control.

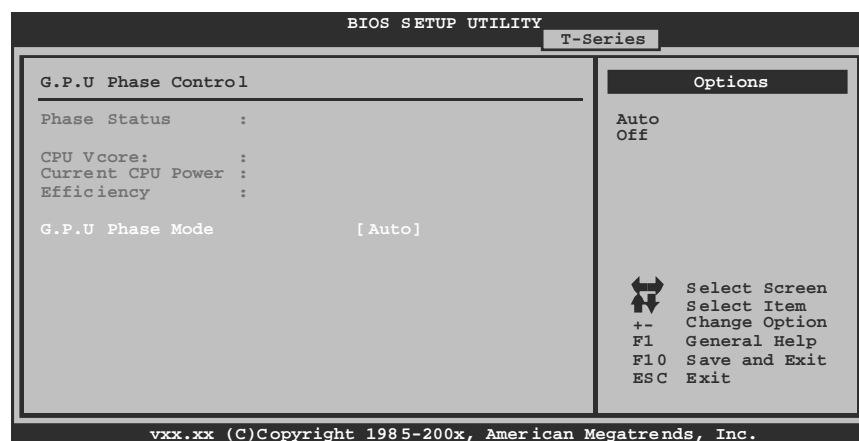
Options: 0.67*VTT (Default) / 0.65*VTT / 0.61*VTT / 0.59*VTT / 0.58*VTT /
0.57*VTT

CPU PLL Voltage

Options: 1.5V (Default) / 1.6V / 1.7V / 1.8V

TP43E3 XE BIOS Manual

G.P.U Phase Control



G.P.U Phase Mode

This item allows you to control G.P.U Phase Mode (power saving technology).

Options: Auto (Default) / Off

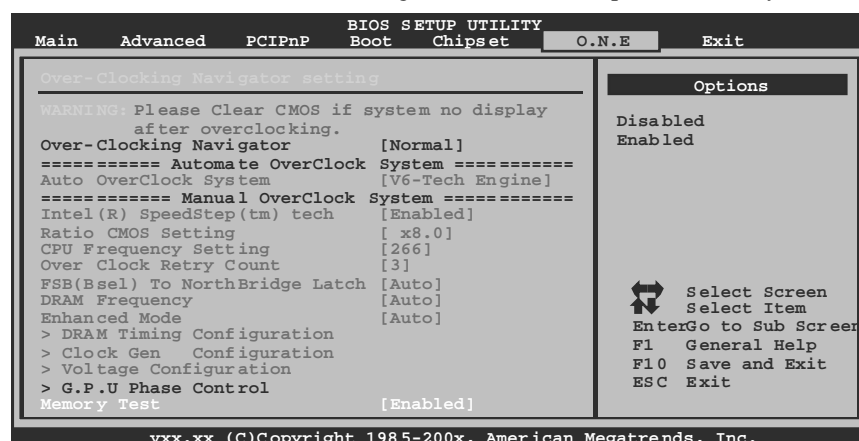
TP43E3 XE BIOS Manual

Integrated Memory Test

Integrated Memory Test allows users to test memory module compatibilities without additional device or software.

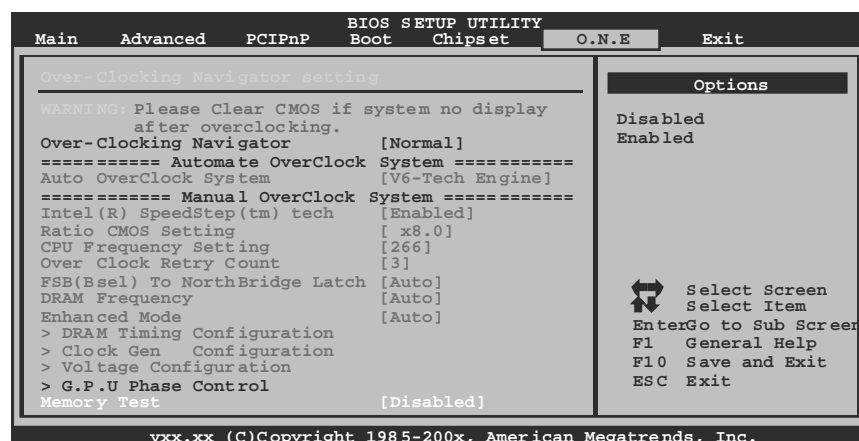
Step 1:

This item is disabled on default; change it to “Enable” to precede memory test.



Step 2:

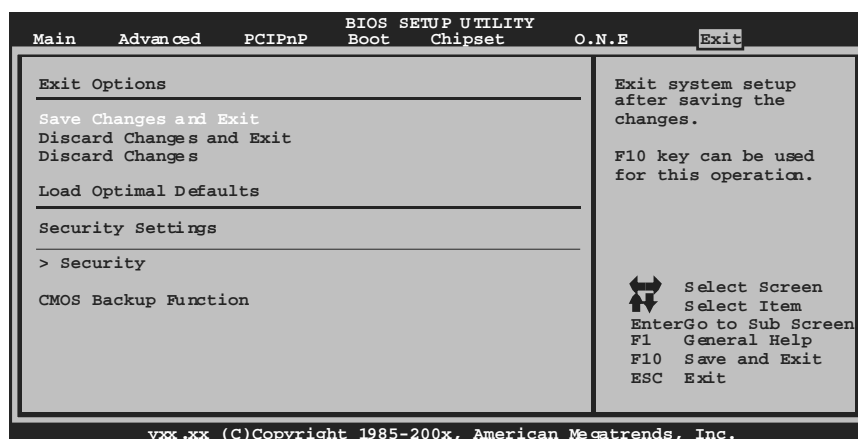
When the process is done, change the setting back from “Enabled” to “Disabled” to complete the test.



TP43E3 XE BIOS Manual

7 Exit Menu

This menu allows you to load the optimal default settings, and save or discard the changes to the BIOS items.



Save Changes and Exit

Save all configuration changes to CMOS RAM and exit setup.

Discard Changes and Exit

Abandon all changes made during the current session and exit setup.

Discard Changes

Abandon all changes made during the current session and restore the previously saved values.

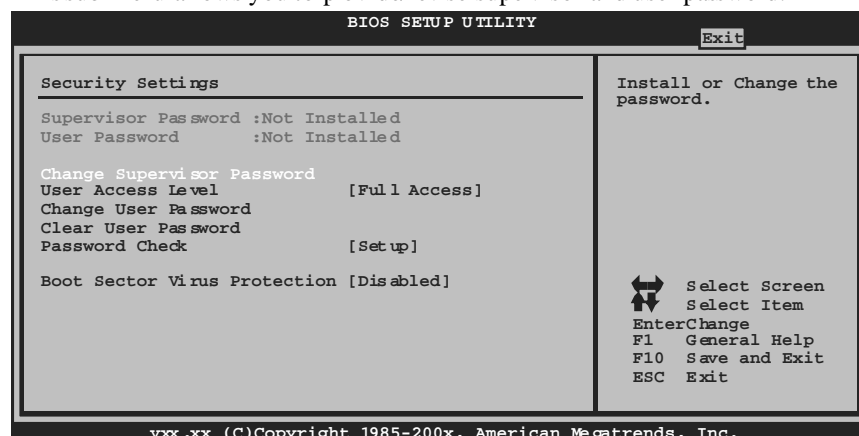
Load Optimal Defaults

This selection allows you to reload the BIOS when problem occurs during system booting sequence. These configurations are factory settings optimized for this system.

TP43E3 XE BIOS Manual

Security

This sub-menu allows you to provide/revise supervisor and user password.



Change Supervisor Password

Setting the supervisor password will prohibit everyone except the supervisor from making changes using the CMOS Setup Utility. You will be prompted with to enter a password.

User Access Level

This item allows supervisor to set the user level.

Options: Full Access (Default) / No Access / View Only / Limited

Change User Password

If the Supervisor Password is not set, then the User Password will function in the same way as the Supervisor Password. If the Supervisor Password is set and the User Password is set, the "User" will only be able to view configurations but will not be able to change them.

Clear User Password

This item is for clearing user password.

TP43E3 XE BIOS Manual

Password Check

This item is for setting the timing that checking password.

Options: Setup (Default) / Always

Boot Sector Virus Protection

This option allows you to choose the VIRUS Warning feature that is used to protect the IDE Hard Disk boot sector. If this function is enabled and an attempt is made to write to the boot sector, BIOS will display a warning message on the screen and sound an alarm beep.

Options: Disabled (Default) / Enabled

CMOS Backup Function

It allows users to save different CMOS settings into BIOS-ROM and reload any saved CMOS setting for customizing system configurations. Moreover, users are able to save an ideal overclock setting during overclock operation.

There are 10 sets of record addresses in total, and users are able to name the CMOS data according to personal preference.

