

FCC Information and Copyright

This equipment has been tested and found to comply with the limits of a Class B digital device, pursuant to Part 15 of the FCC Rules. These limits are designed to provide reasonable protection against harmful interference in a residential installation. This equipment generates, uses, and can radiate radio frequency energy and, if not installed and used in accordance with the instructions, may cause harmful interference to radio communications. There is no guarantee that interference will not occur in a particular installation.

The vendor makes no representations or warranties with respect to the contents here and specially disclaims any implied warranties of merchantability or fitness for any purpose. Further the vendor reserves the right to revise this publication and to make changes to the contents here without obligation to notify any party beforehand.

Duplication of this publication, in part or in whole, is not allowed without first obtaining the vendor's approval in writing.

The content of this user's manual is subject to be changed without notice and we will not be responsible for any mistakes found in this user's manual. All the brand and product names are trademarks of their respective companies.



Dichiarazione di conformità sintetica

Ai sensi dell'art. 2 comma 3 del D.M. 275 del 30/10/2002

Si dichiara che questo prodotto è conforme alle normative vigenti e soddisfa i requisiti essenziali richiesti dalle direttive

2004/108/CE, 2006/95/CE e 1999/05/CE

quando ad esso applicabili

Short Declaration of conformity

We declare this product is complying with the laws in force and meeting all the essential requirements as specified by the directives

2004/108/CE, 2006/95/CE and 1999/05/CE

whenever these laws may be applied

Table of Contents

Chapter 1: Introduction	1
1.1 Before You Start.....	1
1.2 Package Checklist.....	1
1.3 Motherboard Specifications	2
1.4 Rear Panel Connectors	3
1.5 Central Processing Unit (CPU).....	3
1.6 Motherboard Layout	4
Chapter 2: Hardware Installation	5
2.1 Connect Cooling Fans	5
2.2 Install System Memory	5
2.3 Expansion Slots	7
2.4 Jumper Setting	8
2.5 Headers & Connectors	9
Chapter 3: UEFI BIOS & Software	13
3.1 UEFI BIOS Setup	13
3.2 BIOS Update	13
3.3 Software.....	17
Chapter 4: Useful Help	20
4.1 Driver Installation	20
4.2 AMI BIOS Beep Code.....	21
4.3 Troubleshooting	21
Appendix: SPEC In Other Languages	23
Arabic	23
French	24
German.....	25
Portuguese	26
Russian.....	27
Spanish.....	28
Thai.....	29

CHAPTER 1: INTRODUCTION

1.1 Before You Start

Thank you for choosing our product. Before you start installing the motherboard, please make sure you follow the instructions below:

- Prepare a dry and stable working environment with sufficient lighting.
- Always disconnect the computer from power outlet before operation.
- Before you take the motherboard out from anti-static bag, ground yourself properly by touching any safely grounded appliance, or use grounded wrist strap to remove the static charge.
- Avoid touching the components on motherboard or the rear side of the board unless necessary. Hold the board on the edge, do not try to bend or flex the board.
- Do not leave any unfastened small parts inside the case after installation. Loose parts will cause short circuits which may damage the equipment.
- Keep the computer from dangerous area, such as heat source, humid air and water.
- The operating temperatures of the computer should be 0 to 45 degrees Celsius.
- To avoid injury, be careful of:
 - Sharp pins on headers and connectors
 - Rough edges and sharp corners on the chassis
 - Damage to wires that could cause a short circuit

1.2 Package Checklist

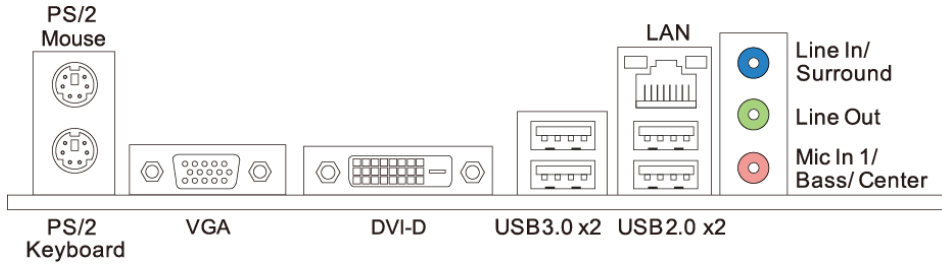
- Serial ATA Cable x2
- Rear I/O Panel for ATX Case x1
- Installation Guide x1
- Fully Setup Driver DVD x1

Note: The package contents may be different due to the sales region or models in which it was sold. For more information about the standard package in your region, please contact your dealer or sales representative.

1.3 Motherboard Specifications

Specifications	
CPU Support	J3160MD: Intel® Celeron® J3160 processor J3060MD: Intel® Celeron® J3060 processor
Memory	Supports Dual Channel DDR3L 1600/1066 (1.35V/1.5V) 2x DDR3L U-DIMM Memory Slot, Max. Supports up to 16 GB Memory (Supports up to 8GB Memory for DDR3L-1600) Each DIMM supports non-ECC 512MB/ 1/ 2/ 4/ 8 GB DDR3L module * Please refer to www.biostar.com.tw for Memory support list.
Storage	2x SATA 6Gb/s Connector Supports AHCI Mode
LAN	Realtek RTL8111H 10/ 100/ 1000 Mb/s auto negotiation, Half / Full duplex capability
Audio Codec	ALC662, 5.1 Channels, High Definition Audio
USB	6x USB 2.0 port (2 on rear I/Os and 4 via internal header) 4x USB 3.0 port (2 on rear I/Os and 2 via internal header)
Expansion Slots	1x PCIe 2.0 x16 Slot (x1 speed) 2x PCIe 2.0 x1 Slot
Rear I/Os	1x PS/2 Mouse 1x PS/2 Keyboard 1x VGA Port 1x DVI-D Port 1x LAN port 2x USB 3.0 Port 2x USB 2.0 Port 3x Audio Jack
Internal I/Os	2x SATA 6.0Gb/s Connector 1x 24-Pin Power Connector 2x USB 2.0 Header (each header supports 2 USB 2.0 ports) 1x USB 3.0 Header (each header supports 2 USB 3.0 ports) 2x System Fan Connector 1x Front Panel Header 1x Front Audio Header 1x Clear CMOS Header 1x Printer Port Header 1x Serial Port Header
Form Factor	microATX Form Factor, 226 mm x 188 mm
OS Support	Windows 7 (64bit)/ Windows 8.1 (64bit)/ Windows 10 Biostar reserves the right to add or remove support for any OS with or without notice.

1.4 Rear Panel Connectors



Note 1: Since the audio chip supports High Definition Audio Specification, the function of each audio jack can be defined by software. The input / output function of each audio jack listed above represents the default setting. However, when connecting external microphone to the audio port, please use the Line In (Blue) and Mic In (Pink) audio jack.

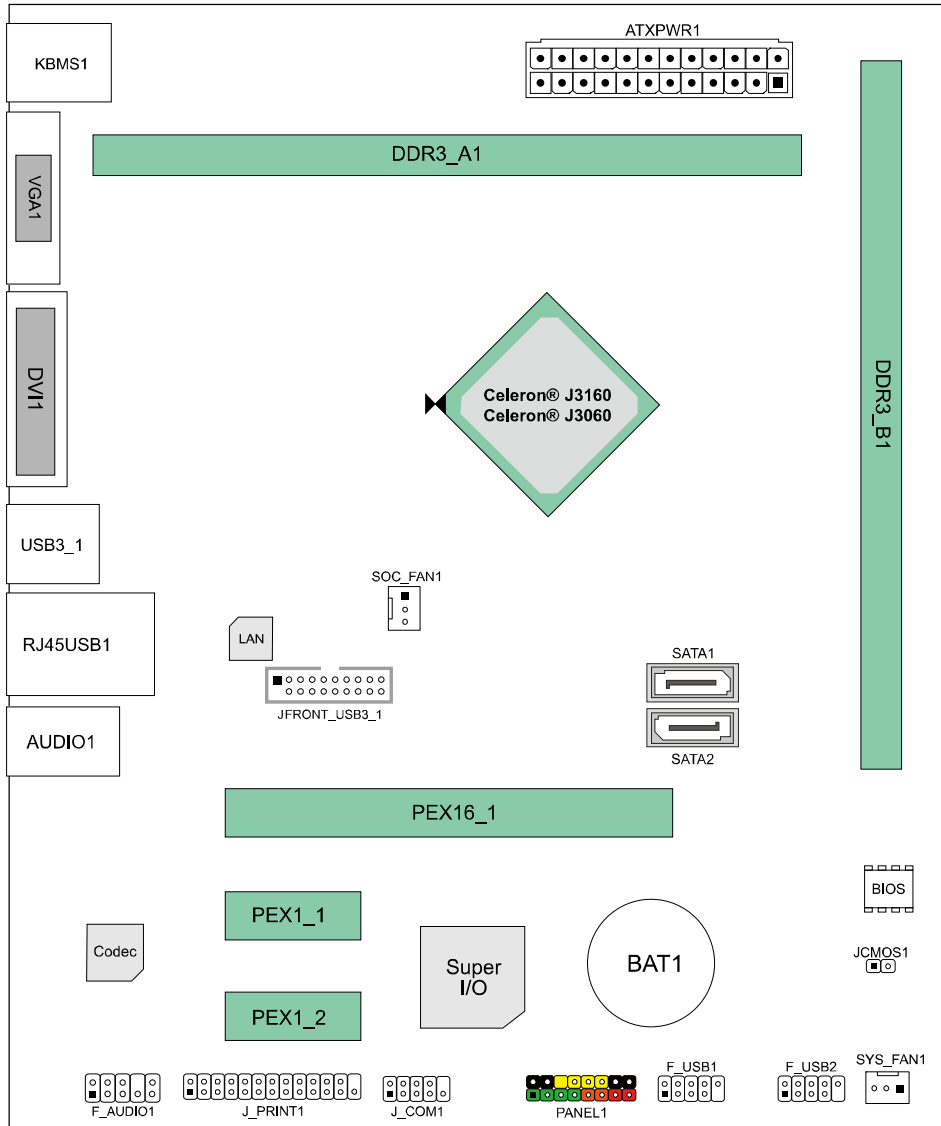
Note 2: Maximum resolution:
 DVI-D: 1920 x 1080 @60Hz
 VGA: 1920 x 1200 @60Hz

1.5 Central Processing Unit (CPU)

The motherboard is equipped with an onboard Intel processor and a CPU cooler.

Model Name:	Onboard CPU:
J3160MD	Intel® Celeron® J3160 processor (Quad Core, 2M Cache, up to 2.24 GHz)
J3060MD	Intel® Celeron® J3060 processor (Dual Core, 2M Cache, up to 2.48 GHz)

1.6 Motherboard Layout



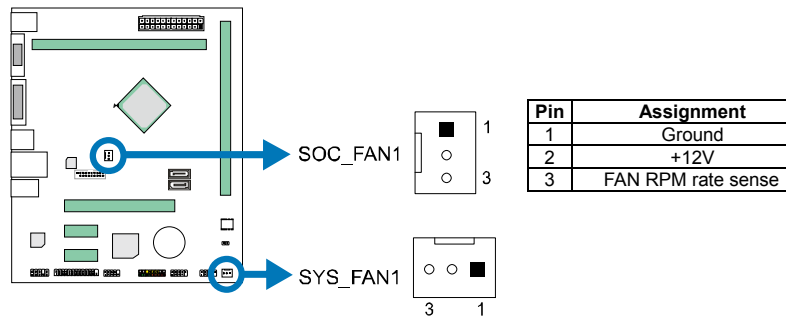
Note: ■ represents the 1st pin.

CHAPTER 2: HARDWARE INSTALLATION

2.1 Connect Cooling Fans

These fan headers support cooling-fans built in the computer. The fan cable and connector may be different according to the fan manufacturer. Connect the fan cable to the connector while matching the black wire to pin#1.

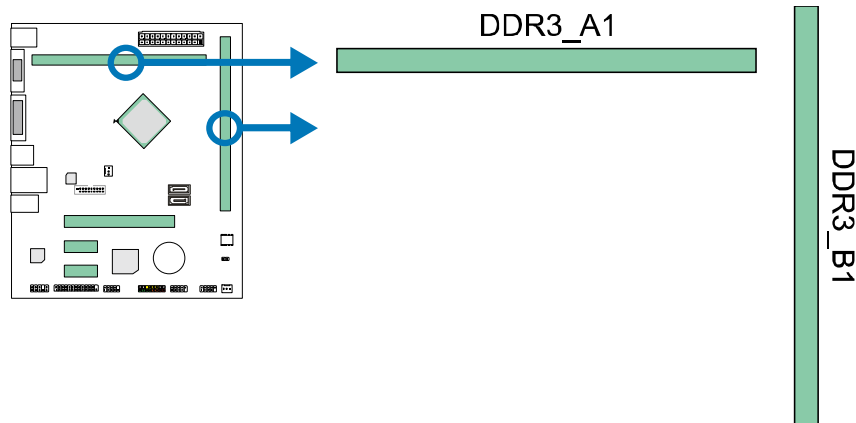
SOC_FAN1/SYS_FAN1: System Fan Header



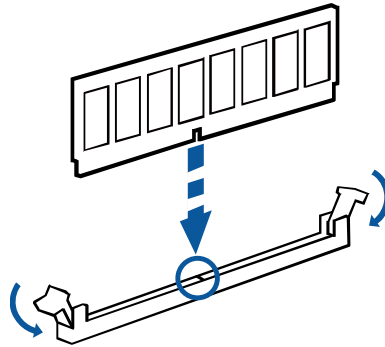
Note: When connecting with wires onto connectors, please note that the red wire is the positive and should be connected to pin#2, and the black wire is Ground and should be connected to GND.

2.2 Install System Memory

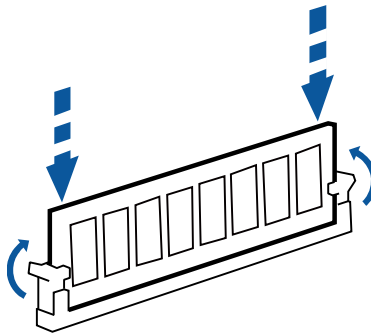
A. DDR3L U-DIMM Module (1.35V/1.5V)



Step 1: Align a DIMM on the slot such that the notch on the DIMM matches the break on the Slot.



Step 2: Insert the DIMM firmly into the slot until the retaining chip snap back in place and the DIMM is properly seated.



Note1: The DIMM must be installed to DIMMA1(DDR3_A1) slot first.

Note2: If the DIMM does not go in smoothly, do not force it. Pull it all the way out and try again.

B. Memory Capacity

DIMM Socket Location	DDR3L Module	Total Memory Size
DIMMA1	512MB/1GB/2GB/4GB/8GB	Max is 16GB (Supports up to 8GB Memory for DDR3L-1600)
DIMMB1	512MB/1GB/2GB/4GB/8GB	

C. Dual Channel Memory Installation

Please refer to the following requirements to activate Dual Channel function:
Install memory module of the same density in pairs, shown in the table.

Dual Channel Status	DIMMA1	DIMMB1
Disabled	O	X
Enabled	O	O

(O means memory installed, X means memory not installed.)

Note: When installing more than one memory module, we recommend to use the same brand and capacity memory on this motherboard.

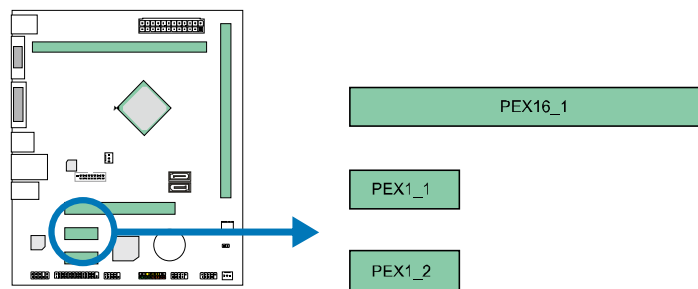
2.3 Expansion Slots

PEX16_1: PCI-Express x16 Slot (Gen2 x1 speed)

- PCI-Express 2.0 compliant.
- Data transfer bandwidth up to 500MB/s per direction; 1GB/s in total.

PEX1_1/PEX1_2: PCI-Express Gen2 x1 Slot

- PCI-Express 2.0 compliant.
- Data transfer bandwidth up to 500MB/s per direction; 1GB/s in total.



Install an Expansion Card

You can install your expansion card by following steps:

1. Read the related expansion card's instruction document before install the expansion card into the computer.
2. Remove your computer's chassis cover, screws and slot bracket from the computer.
3. Place a card in the expansion slot and press down on the card until it is completely seated in the slot.
4. Secure the card's metal bracket to the chassis back panel with a screw.
5. Replace your computer's chassis cover.
6. Power on the computer, if necessary, change BIOS settings for the expansion card.
7. Install related driver for the expansion card.

2.4 Jumper Setting

The illustration shows how to set up jumpers. When the jumper cap is placed on pins, the jumper is “close”, if not, that means the jumper is “open”.



Pin opened



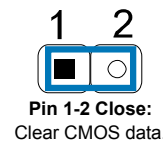
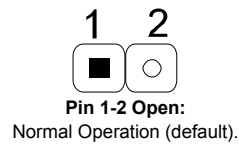
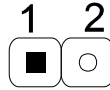
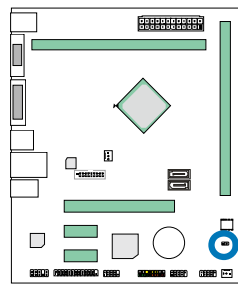
Pin closed



Pin1-2 closed

JCMOS1: Clear CMOS Jumper

The jumper allows users to restore the BIOS safe setting and the CMOS data. Please carefully follow the procedures to avoid damaging the motherboard.



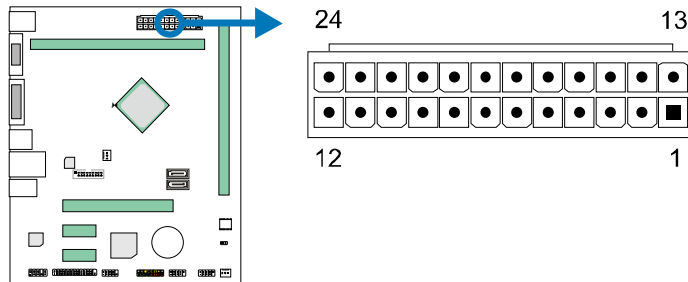
※ Clear CMOS Procedures:

1. Remove AC power line.
2. Set the jumper to “Pin 1-2 close”, you can use a metal object like a screwdriver to touch the two pins.
3. Wait for five seconds.
4. After clearing the CMOS values, be sure the jumper is “Pin 1-2 open”.
5. Power on the AC.
6. Load Optimal Defaults and save settings in CMOS.

2.5 Headers & Connectors

ATXPWR1: ATX Power Source Connector

For better compatibility, we recommend to use a standard ATX 24-pin power supply for this connector. Make sure to find the correct orientation before plugging the connector.



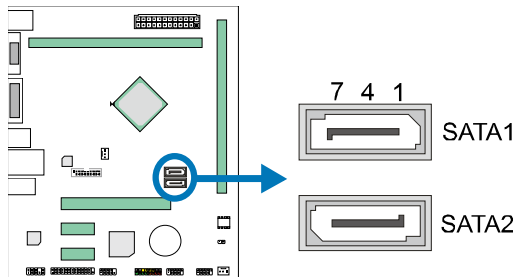
Pin	Assignment	Pin	Assignment
13	+3.3V	1	+3.3V
14	-12V	2	+3.3V
15	Ground	3	Ground
16	PS_ON	4	+5V
17	Ground	5	Ground
18	Ground	6	+5V
19	Ground	7	Ground
20	NC	8	PW_OK
21	+5V	9	Standby Voltage+5V
22	+5V	10	+12V
23	+5V	11	+12V
24	Ground	12	+3.3V

Note1: Before you power on the system, please make sure the ATXPWR1 connector have been plugged-in.

Note2: Insufficient power supplied to the system may result in instability or the peripherals not functioning properly. Use of a PSU with a higher power output is recommended when configuring a system with more power-consuming devices.

SATA1/2: Serial ATA Connectors

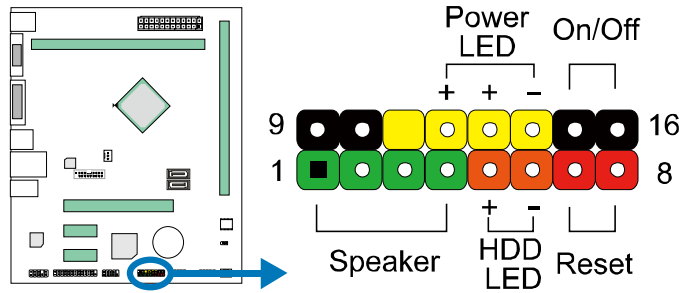
These connectors connect to SATA hard disk drives via SATA cables.



Pin	Assignment
1	Ground
2	TX+
3	TX-
4	Ground
5	RX-
6	RX+
7	Ground

PANEL1: Front Panel Header

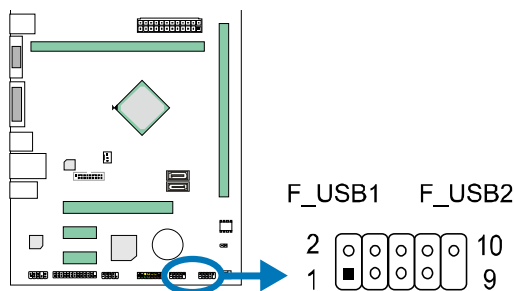
This 16-pin connector includes Power-on, Reset, HDD LED, Power LED, and speaker connection. It allows user to connect the PC case's front panel switch functions.



Pin	Assignment	Function	Pin	Assignment	Function
1	+5V	Speaker Connector	9	N/A	N/A
2	N/A		10	N/A	
3	N/A		11	N/A	
4	Speaker	Hard drive LED	12	Power LED (+)	Power LED
5	HDD LED (+)		13	Power LED (+)	
6	HDD LED (-)		14	Power LED (-)	
7	Ground	Reset button	15	Power button	Power-on button
8	Reset control		16	Ground	

F_USB1/2: Header for USB 2.0 Ports at Front Panel

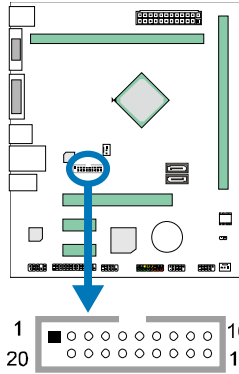
This header allows user to connect additional USB cable on the PC front panel, and also can be connected with a wide range of simultaneously accessible external Plug and Play peripherals.



Pin	Assignment
1	+5V (fused)
2	+5V (fused)
3	USB-
4	USB-
5	USB+
6	USB+
7	Ground
8	Ground
9	Key
10	NC

JFRONT_USB3_1: Header for USB 3.0 Ports at Front Panel

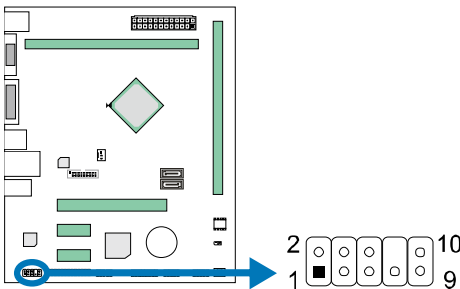
This header allows user to connect additional USB cable on the PC front panel, and also can be connected with a wide range of simultaneously accessible external Plug and Play peripherals.



Pin	Assignment	Pin	Assignment
1	VBUS0	11	D2+
2	SSRX1-	12	D2-
3	SSRX1+	13	Ground
4	Ground	14	SSTX2+
5	SSTX1-	15	SSTX2-
6	SSTX1+	16	Ground
7	Ground	17	SSRX2+
8	D1-	18	SSRX2-
9	D1+	19	VBUS1
10	ID	20	Key

F_AUDIO1: Front Panel Audio Header

This header allows user to connect the front audio output cable with the PC front panel. This header supports HD and AC'97 audio front panel connector.



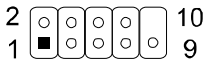
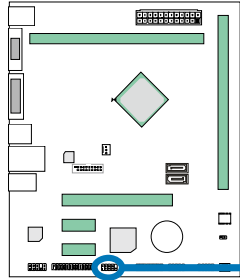
HD Audio		AC'97	
Pin	Assignment	Pin	Assignment
1	Mic Left in	1	Mic In
2	Ground	2	Ground
3	Mic Right in	3	Mic Power
4	GPIO	4	Audio Power
5	Right line in	5	RT Line Out
6	Jack Sense	6	RT Line Out
7	Front Sense	7	Reserved
8	Key	8	Key
9	Left line in	9	LFT Line Out
10	Jack Sense	10	LFT Line Out

Note1: It is recommended that you connect a high-definition front panel audio module to avail of the motherboard's high definition audio capability.

Note2: Please try to disable the "Front Panel Jack Detection" if you want to use an AC'97 front audio output cable. The function can be found via O.S. Audio Utility.

J_COM1: Serial Port Connector

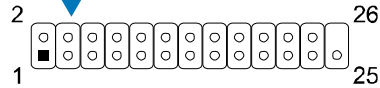
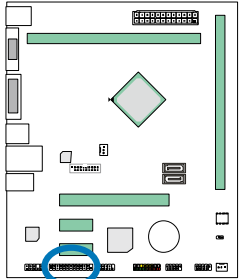
The motherboard has a Serial Port Connector for connecting RS-232 Port.



Pin	Assignment
1	Carrier detect
2	Received data
3	Transmitted data
4	Data terminal ready
5	Signal ground
6	Data set ready
7	Request to send
8	Clear to send
9	Ring indicator
10	Key

J_PRINT1: Printer Port Connector

This header allows you to connector printer on the PC.



Pin	Assignment	Pin	Assignment
1	-Strobe	14	Ground
2	-ALF	15	Data 6
3	Data 0	16	Ground
4	-Error	17	Data 7
5	Data 1	18	Ground
6	-Init	19	-ACK
7	Data 2	20	Ground
8	-Scltin	21	Busy
9	Data 3	22	Ground
10	Ground	23	PE
11	Data 4	24	Ground
12	Ground	25	SCLT
13	Data 5	26	Key

CHAPTER 3: UEFI BIOS & SOFTWARE

3.1 UEFI BIOS Setup

- The BIOS Setup program can be used to view and change the BIOS settings for the computer. The BIOS Setup program is accessed by pressing the key after the Power-On Self-Test (POST) memory test begins and before the operating system boot begins.
- For further information of setting up the UEFI BIOS, please refer to the UEFI BIOS Manual in the Setup DVD.

3.2 BIOS Update

The BIOS can be updated using either of the following utilities:

- **BIOSTAR BIOS Flasher:** Using this utility, the BIOS can be updated from a file on a hard disk, a USB drive (a flash drive or a USB hard drive), or a CD-ROM.
- **BIOSTAR BIOS Update Utility:** It enables automated updating while in the Windows environment. Using this utility, the BIOS can be updated from a file on a hard disk, a USB drive (a flash drive or a USB hard drive), or a CD-ROM, or from the file location on the Web.

BIOSTAR BIOS Flasher

BIOSTAR BIOS Flasher is a BIOS flashing utility providing you an easy and simple way to update your BIOS via USB pen drive.

Note1: This utility only allows storage device with FAT32/16 format and single partition.

Note2: Shutting down or resetting the system while updating the BIOS will lead to system boot failure.

Updating BIOS with BIOSTAR BIOS Flasher

1. Go to the website to download the latest BIOS file for the motherboard.
2. Then, copy and save the BIOS file into a USB flash (pen) drive.
3. Insert the USB pen drive that contains the BIOS file to the USB port.
4. Power on or reset the computer and then press <F12> during the POST process.

5. After entering the POST screen, the BIOS-FLASHER utility pops out. Choose [fs0] to search for the BIOS file.



6. Select the proper BIOS file, and a message asking if you are sure to flash the BIOS file. Click Yes to start updating BIOS.



7. A dialog pops out after BIOS flash is completed, asking you to restart the system. Press the [Y] key to restart system.



8. While the system boots up and the full screen logo shows up, press key to enter BIOS setup. After entering the BIOS setup, please go to the **Save & Exit**, using the **Restore Defaults** function to load Optimized Defaults, and select **Save Changes and Reset** to restart the computer. Then, the BIOS Update is completed.

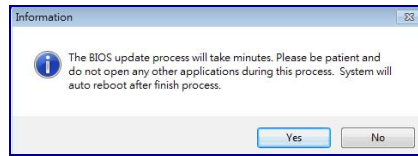
BIOS Update Utility (through the Internet)

1. Installing BIOS Update Utility from the DVD Driver.
2. Please make sure the system is connected to the internet before using this function.

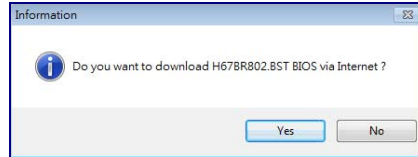
3. Launch BIOS Update Utility and click the **Online Update** button on the main screen.



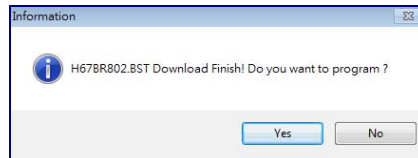
4. An open dialog will show up to request your agreement to start the BIOS update. Click **Yes** to start the online update procedure.



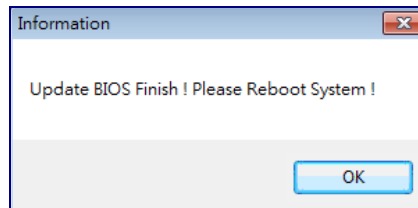
5. If there is a new BIOS version, the utility will ask you to download it. Click **Yes** to proceed.



6. After the download is completed, you will be asked to program (update) the BIOS or not. Click **Yes** to proceed.



7. After the updating process is finished, you will be asked you to reboot the system. Click **OK** to reboot.



8. While the system boots up and the full screen logo shows up, press key to enter BIOS setup. After entering the BIOS setup, please go to the **Save & Exit**, using the **Restore Defaults** function to load Optimized Defaults, and select **Save Changes and Reset** to restart the computer. Then, the BIOS Update is completed.

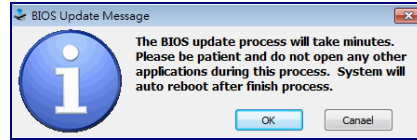
BIOS Update Utility (through a BIOS file)

1. Installing BIOS Update Utility from the DVD Driver.
2. Download the proper BIOS from <http://www.biostar.com.tw/>

3. Launch BIOS Update Utility and click the **Update BIOS** button on the main screen.



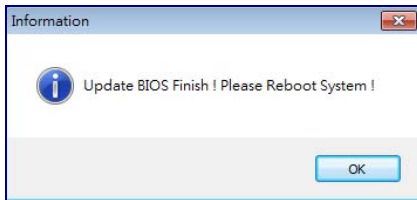
4. A warning message will show up to request your agreement to start the BIOS update. Click **OK** to start the update procedure.



5. Choose the location for your BIOS file in the system. Please select the proper BIOS file, and then click on **Open**. It will take several minutes, please be patient.



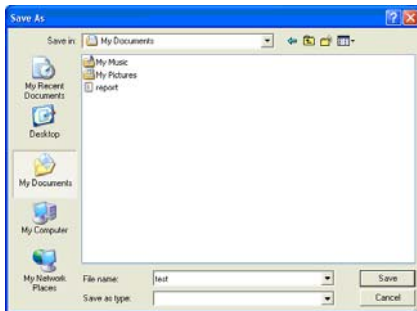
6. After the BIOS Update process is finished, click on **OK** to reboot the system.



7. While the system boots up and the full screen logo shows up, press key to enter BIOS setup. After entering the BIOS setup, please go to the **Save & Exit**, using the **Restore Defaults** function to load Optimized Defaults, and select **Save Changes and Reset** to restart the computer. Then, the BIOS Update is completed.

Backup BIOS

Click the Backup BIOS button on the main screen for the backup of BIOS, and select a proper location for your backup BIOS file in the system, and click **Save**.



3.3 Software

Installing Software

1. Insert the Setup DVD to the optical drive. The driver installation program would appear if the Auto-run function has been enabled.
2. Select **Software Installation**, and then click on the respective software title.
3. Follow the on-screen instructions to complete the installation.

Launching Software

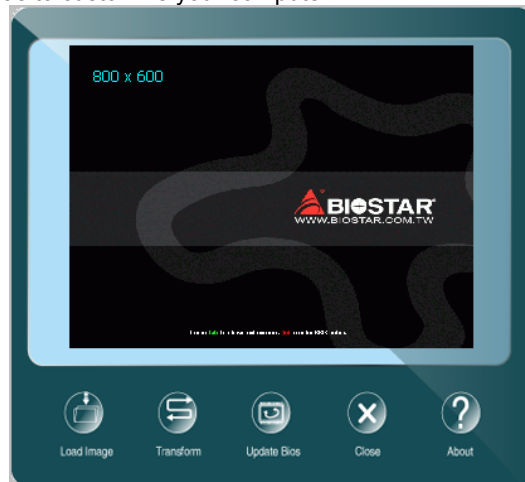
After the installation process is completed, you will see the software icon showing on the desktop. Double-click the icon to launch it.

Note1: All the information and content about following software are subject to be changed without notice. For better performance, the software is being continuously updated.

Note2: The information and pictures described below are for your reference only. The actual information and settings on board may be slightly different from this manual.

BIOScreen Utility

This utility allows you to personalize your boot logo easily. You can choose BMP as your boot logo so as to customize your computer.



Please follow the step-by-step instructions below to update boot logo:

- Load Image : Choose the picture as the boot logo.
- Transform : Transform the picture for BIOS and preview the result.
- Update Bios : Write the picture to BIOS Memory to complete the update.

eHot-Line

eHot-Line is a convenient utility that helps you to contact with our Tech-Support system. This utility will collect the system information which is useful for analyzing the problem you may have encountered, and then send these information to our tech-support department to help you fix the problem.

Note: Before you use this utility, please set Outlook Express as your default e-mail client application program.

*represents important information that you must provide. Without this information, you may not be able to send out the mail.

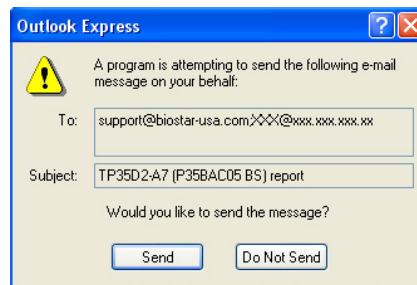
This block will show the information which would be collected in the mail.

*Describe condition of your system.

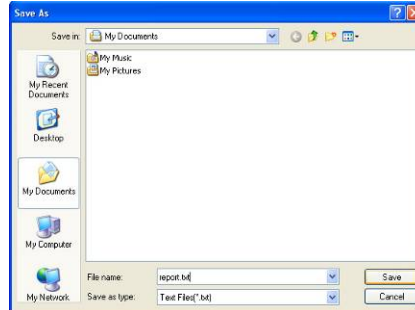
The screenshot shows the eHot-Line utility window. On the left, a text box displays system information: Base board information: Caption: Base Board, CreationClassName: Win32_Base, Description: Base Board, HostingBoard: TRUE, HotSwappable: FALSE, Manufacturer: BIOSTAR Group, Name: Base Board, PoweredOn: TRUE, Product: TA780G M2+, Removable: FALSE, Replaceable: TRUE, RequiresDaughterBoard: FALSE, SerialNumber: None, Status: OK, Tag: Base Board, Version: 6.0. The main area is titled 'Symptom Description' and contains a large empty text box for user input. Below this are several input fields: 'Region' (a dropdown menu), 'CC E-mail' (a text box), 'Memory Module Manufacture' (a text box), and 'Power Supply Manufacture/model' (a text box). At the bottom are three buttons: 'Send', 'Save As...', and 'Exit'. Red arrows point from annotations to these elements: one to the system information box, one to the Symptom Description text box, one to the Region dropdown, one to the CC E-mail field, one to the Memory Module Manufacture field, one to the Power Supply Manufacture/model field, one to the Send button, one to the Save As... button, and one to the Exit button.

After filling up this information, click “Send” to send the mail out. A warning dialog would appear asking for your confirmation; click “Send” to confirm or “Do Not Send” to cancel.

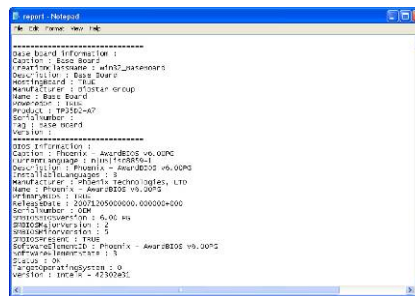
If you want to save this information to a .txt file, click “Save As...” and then you will see a saving dialog appears asking you to enter file name.



Enter the file name and then click “Save”. Your system information will be saved to a .txt file.



Open the saved .txt file, you will see your system information including motherboard/BIOS/CPU/video/ device/OS information. This information is also concluded in the sent mail.



Note1: We will not share customer's data with any other third parties, so please feel free to provide your system information while using eHot-Line service.

Note2: If you are not using Outlook Express as your default e-mail client application, you may need to save the system information to a .txt file and send the file to our tech support with other e-mail application. Go to the following website <http://www.biostar.com.tw/app/en/about/contact.php> for getting our contact information.

CHAPTER 4: USEFUL HELP

4.1 Driver Installation

After you installed your operating system, please insert the Fully Setup Driver DVD into your optical drive and install the driver for better system performance. You will see the following window after you insert the DVD



The setup guide will auto detect your motherboard and operating system.

A. Driver Installation

To install the driver, please click on the Driver icon. The setup guide will list the compatible driver for your motherboard and operating system. Click on each device driver to launch the installation program.

B. Software Installation

To install the software, please click on the Software icon. The setup guide will list the software available for your system, click on each software title to launch the installation program.

C. Manual

Aside from the paperback manual, we also provide manual in the Driver DVD. Click on the Manual icon to browse for available manuals.

Note1: If this window didn't show up after you insert the Driver DVD, please use file browser to locate and execute the file SETUP.EXE under your optical drive.
Note2: You will need Acrobat Reader to open the manual file. Please download the latest version of Acrobat Reader software from <http://get.adobe.com/reader/>

4.2 AMI BIOS Beep Code

Boot Block Beep Codes

Number of Beeps	Description
Continuing	Memory sizing error or Memory module not found

POST BIOS Beep Codes

Number of Beeps	Description
1	Success booting.
8	Display memory error (system video adapter)

4.3 Troubleshooting

Probable	Solution
<ol style="list-style-type: none"> There is no power in the system. Power LED does not shine; the fan of the power supply does not work Indicator light on keyboard does not shine. 	<ol style="list-style-type: none"> Make sure power cable is securely plugged in. Replace cable. Contact technical support.
System is inoperative. Keyboard lights are on, power indicator lights are lit, and hard drives are running.	Using even pressure on both ends of the DIMM, press down firmly until the module snaps into place.
System does not boot from a hard disk drive, but can be booted from optical drive.	<ol style="list-style-type: none"> Check cable running from disk to disk controller board. Make sure both ends are securely plugged in; check the drive type in the standard CMOS setup. Backing up the hard drive is extremely important. All hard disks are capable of breaking down at any time.
System only boots from an optical drive. Hard disks can be read, applications can be used, but system fails to boot from a hard disk.	<ol style="list-style-type: none"> Back up data and applications files. Reformat the hard drive. Re-install applications and data using backup disks.
Screen message shows "Invalid Configuration" or "CMOS Failure."	Review system's equipment. Make sure correct information is in setup.
System cannot boot after user installs a second hard drive.	<ol style="list-style-type: none"> Set master/slave jumpers correctly. Run SETUP program and select correct drive types. Call the drive manufacturers for compatibility with other drives.

CPU Overheated

If the system shutdown automatically after power on system for seconds, that means the CPU protection function has been activated.

When the CPU is over heated, the motherboard will shutdown automatically to avoid a damage of the CPU, and the system may not power on again.

In this case, please double check:

1. The CPU cooler surface is placed evenly with the CPU surface.
2. CPU fan is rotated normally.
3. CPU fan speed is fulfilling with the CPU speed.

After confirmed, please follow steps below to relief the CPU protection function.

1. Remove the power cord from power supply for seconds.
2. Wait for seconds.
3. Plug in the power cord and boot up the system.

Or you can:

1. Clear the CMOS data.
2. Wait for seconds.
3. Power on the system again.

APPENDIX: SPEC IN OTHER LANGUAGES

Arabic

المواصفات	
J3160MD: Intel® Celeron® J3160 processor J3060MD: Intel® Celeron® J3060 processor	قاعدة وحدة المعالجة المركزية
تدعم قناة مزدوجة دي. دي. ار. DDR3L 1600/1066(1.35V/1.5V) فتحات الذاكرة المزدوجة U-DIMM، تتحمل كحد أقصى 16 جيجابايت ذاكرة كل فتحة مزدوجة DIMM تتحمل دون 512 ECC ميجا بايت 8/4/2/1/ جيجابايت دي. دي. ار. DDR3L * يرجى الرجوع إلى الموقع www.biostar.com.tw لقائمة دعم الذاكرة.	الذاكرة
وصلة x 2 ساتا SATA جيجا بايت / الثانية تتحمل رايد الأم AHCI	التخزين
Realtek RTL8111H 1000 / 100 / 10 ميجابايت / الثانية ، تحديد تلقائي ، النصف / القدرة القصوى المزدوجة	شبكة محلية LAN
ALC662 5.1 قنوات عالية الدقة	الترميز الصوتي
6 منافذ x ناقل متسلسل عام USB 2.0 (2 في المداخل والمخارج الخلفية و 4 من خلال الموزع الداخلي) 4 منافذ x ناقل متسلسل عام USB 3.0 (2 في المداخل والمخارج الخلفية و 2 من خلال الموزع الداخلي)	ناقل متسلسل عام USB
1 x فتحة منفذ الملحقات الإضافية PCIe 2.0 16 x (x1) 2 x فتحة منفذ الملحقات الإضافية PCIe 2.0 1 x	فتحات التوسع
1 x PS/2 الفارة 1 x PS/2 لوحة المفاتيح للكمبيوتر فتحة توصيل عدد 1 x DVI-D بسيط متعدد العالي الوضوح فتحة توصيل عدد 1 x منظومة العرض المرئي VGA فتحة لتوصيل عدد 1 x الشبكة المحلية LAN فتحة توصيل عدد 2 x ناقل متسلسل عام USB 3.0 فتحة توصيل عدد 2 x ناقل متسلسل عام USB 2.0 فتحة توصيل عدد 3 x جاك للصوت	المداخل والمخارج الخلفية
وصلة x 2 SATA 6 جيجابايت / الثانية وصلة للطاقة 1 x 24 دبوس موزع x 2 ناقل متسلسل عام USB 2.0 (كل موزع يتحمل فتحتين ناقل متسلسل عام USB 2.0) موزع x 1 ناقل متسلسل عام USB 3.0 (كل موزع يتحمل فتحتين ناقل متسلسل عام USB 3.0) وصلة x 2 مراوح تبريد المنظومة موزع x 1 اللوحة الأمامية موزع x 1 الصوت الأمامي موزع x 1 سيموس مباشر موزع x 1 فتحة للطابعة موزع x 1 فتحة تسلسلية	المداخل والمخارج الداخلية
عامل شكل مدد التكنولوجيا المتقدمة microATX، 226 مم x 188 مم	عامل الشكل
ويندوز إكس ب Windows 7 (64bit)/ Windows 8.1 (64bit)/ Windows 10 بيوستار BIOSSTAR تحتفظ بحق إضافة أو إزالة الدعم لأي نظام تشغيل مع أو بدون أنظار.	أنظمة التشغيل المدعومة

French

Spécifications	
Support Unité Centrale	J3160MD: Intel® Celeron® J3160 processor J3060MD: Intel® Celeron® J3060 processor
Mémoire	Supporte mémoire DDR3L double canal 1600/1066 (1.35V/1.5V) Banc de mémoire 2 x DDR3L U-DIMM, Supporte max. jusqu'à une mémoire de 16 GB Chaque module DIMM supporte module DDR3L non-ECC 512MB/ 1/ 2/ 4/ 8 GB * Veuillez vous reporter à www.biostar.com.tw pour la liste des soutien de la mémoire.
Stockage	Connecteur 2 x SATA 6Gb/s Supporte système indigène AHCI mode
Réseau local	Realtek RTL8111H 10/ 100/ 1000 Mb/s auto négociation, capacité bidirectionnelle à l'alternat / bidirectionnelle simultanée
Codec audio	ALC662 Canaux 5.1, écoute audio de haute définition
USB	Port 6x USB 2.0 (2 sur les I/O arrières et 4 en interne) Port 4x USB 3.0 (2 sur les I/O arrières et 2 en interne)
Connecteur d'extension	1x PCIe 2.0 x16 Fente (x1) 2x PCIe 2.0 x1 Fente
I/O arrières	1x PS/2 Clavier 1x PS/2 Souris 1x Port DVI-D 1x Port VGA 1x port LAN 2x Port USB 3.0 2x Port USB 2.0 3x entrées audio
I/O en interne	2x Connecteur SATA 6.0Gb/s 1x 24-Broche de carte 2x embases USB 2.0 (chaque embase supporte 2 Ports USB 2.0) 1x embases USB 3.0 (chaque embase supporte 2 Ports USB 3.0) 2x Connecteur ventilateur système 1x Fiche panneau avant 1x Fiche audio avant 1x Fiche mémoire CMOS vide 1x Embase port imprimante 1x Embase port série
Facteur d'encombrenement	Facteur d'encombrenement microATX, 226 mm x 188 mm
Support SE	Windows 7 (64bit)/ Windows 8.1 (64bit)/ Windows 10 Biostar se réserve le droit d'ajouter ou d'enlever le support pour toute SE avec ou sans préavis.

German

Spezifikationen	
CPU-Unterstützung	J3160MD: Intel® Celeron® J3160 processor J3060MD: Intel® Celeron® J3060 processor
Festplattenspeicher	Unterstützt zweikanaliges DDR3L 1600/1066 (1.35V/1.5V) 2 x DDR3L U-DIMM-SpeicherSlot, Max. Unterstützung bis zu 16 GB-Speicher Jedes DIMM unterstützt nicht-ECC 512MB/ 1/ 2/ 4/ 8 GB DDR3L-Module * Bitte konsultieren Sie www.biostar.com.tw für Speicherunterstützung Liste.
Arbeitsspeicher	2x SATA 6Gb-Verbindung Unterstützt Ureinwohner AHCI Modus
LAN	Realtek RTL8111H 10/ 100/ 1000 Mb Auto-Negotiation, Halb- / Voll-Duplex-fähig
Audio-Codec	ALC662 5.1 Kanäle, HD-Audio
USB	6x USB 2.0-Port (2 hintere I/Os und 4 via interne Header) 4x USB 3.0-Port (2 hintere I/Os und 2 via interne Header)
Erweiterungsanschlüsse	1x PCIe 2.0 x16-Slot (x1) 2x PCIe 2.0 x1-Slot
Hintere I/Os	1x PS/2-Maus 1x PS/2-Keyboard 1x DVI-D-Port 1x VGA-Port 1x LAN-Port 2x USB 3.0-Port 2x USB 2.0-Port 3x Audio Jack
Interne I/Os	2x SATA 6.0Gb/s-Verbindung 1x 24-Pin-Stromverbindung 2x USB 2.0-Header (jeder Header unterstützt 2 USB 2.0-Ports) 1x USB 3.0-Header (jeder Header unterstützt 2 USB 3.0-Ports) 2x System-Ventilatorverbindung 1x Header für Frontpanel 1x Header für Frontaudio 1x Header für klares CMOS 1x Header für Druckerport 1x Serieller Port-Header
Formfaktor	microATX Formfaktor, 226 mm x 188 mm
OS-Unterstützung	Windows 7 (64bit)/ Windows 8.1 (64bit)/ Windows 10 Biostar reserves the right to add or remove support for any OS with or without notice.

Portuguese

Especificações	
Suporte Processador	J3160MD: Intel® Celeron® J3160 processor J3060MD: Intel® Celeron® J3060 processor
Memória	Suporta DDR3L 1600/1066 Canal Duplo (1.35V/1.5V) 2 x DDR3L U-DIMM Slot de memória Suporta até 16 GB Memória Cada DIMM suporta non-ECC 512MB/ 1/ 2/ 4/ 8 GB DDR3L módulo * Por favor consulte www.biostar.com.tw para obter uma lista de suporte do memória.
Armazenamento	Conector 2x SATA 6Gb/s, Suporta AHCI modo
LAN	Realtek RTL8111H 10/ 100/ 1000 Mb auto negociação, capacidade duplex Metade / Cheio
Codec de Audio	ALC662 Canais de Áudio de Alta Definição 5.1
USB	Porta 6x USB 2.0 (2 nas entradas/saídas traseiras e 4 pelos Dispositivos internos) Porta 4x USB 3.0 (2 nas entradas/saídas traseiras e 2 pelos Dispositivos internos)
Slots de expansão	Porta 1x PCIe 2.0 x16 (x1) Porta 2x PCIe 2.0 x1
Entradas/Saídas no painel traseiro	Mouse 1x PS/2 Teclado 1x PS/2 Porta 1x DVI-D Porta 1x VGA Porta 1x LAN Porta 2x USB 3.0 Porta 2x USB 2.0 Soquete audio 3x
Conectores na placa	Conector 2x SATA 6.0Gb/s Conector de 24 pinos x1 Dispositivo 2x USB 2.0 (cada Dispositivo suporta 2 portas USB 2.0) Dispositivo 1x USB 3.0 (cada Dispositivo suporta 2 portas USB 3.0) Conector de Ventoinha Sistema x2 Dispositivo Painel Frontal x1 Dispositivo de Audio Frontal x1 Dispositivo CMOS Direct x1 Dispositivo Porta Impressora x1 Dispositivo Porta Série x1
Fator de Fôrma	Fator de Fôrma microATX, 226 mm x 188 mm
Suporte OS	Windows 7 (64bit)/ Windows 8.1 (64bit)/ Windows 10 Biostar reserva seu direito de adicionar ou retirar o suporte para qualquer OS com ou sem notificação.

Russian

Спецификации	
Поддержка центрального процессора	J3160MD: Intel® Celeron® J3160 processor J3060MD: Intel® Celeron® J3060 processor
Память	Поддерживает двухканальный DDR3L 1600/1066 (1.35V/1.5V) 2 гнезда платы памяти DDR3L U-DIMM, максимальная память до 16 Гб Каждый модуль DIMM поддерживает модуль не-ECC 512 Мб/ 1/ 2/ 4/ 8 Гб DDR3L * Перечень поддержки памяти смотрите на www.biostar.com.tw .
Накопитель	Соединитель 2x SATA 6 Гб/с, Поддерживает родной AHCI режим
Локальная сеть	Realtek RTL8111H Автосогласование 10/ 100/ 1000 Мб/с, работает в полно/полудуплексном режиме
Аудиокодек	ALC662 Каналы 5.1, высококачественное аудио
USB	6 порта USB 2.0 (2 сзади ввода-вывода и 4 через внутренние контакты) 4 порта USB 3.0 (2 сзади ввода-вывода и 2 через внутренние контакты)
Гнезда расшир.	1x PCIe 2.0 x16 гнездо (x1) 2x PCIe 2.0 x1 гнездо
Задняя плата ввода-вывода	1 мышь PS/2 1 клавиатура PS/2 1 порт DVI-D 1 порт VGA 1 порт локальной сети 2 порта USB 3.0 2 порта USB 2.0 3 гнезд для подключения наушников 1x 19V DC-IN
Внутр. Плата ввода-вывода	Соединитель 2x SATA 6 Гб/с 1 24-выводный разъем питания 2 контакта USB 2.0 (каждый контакт поддерживает 2 порта USB 2.0) 1 контакта USB 3.0 (каждый контакт поддерживает 2 порта USB 3.0) 2 разъема вентилятора системы 1 контакт передней панели 1 контакт передней аудиопанели 1 контакт микросхемы Clear CMOS 1 контакт порта принтера 1 контакт последовательного порта
Конструктив	Форм-фактор microATX, 226мм x 188 мм
Поддержка ОС	Windows 7 (64bit)/ Windows 8.1 (64bit)/ Windows 10 Biostar оставляет за собой право добавлять или удалять поддержку любой ОС, с уведомлением или без.

Spanish

Especificaciones	
Compatibilidad con el procesador	J3160MD: Intel® Celeron® J3160 processor J3060MD: Intel® Celeron® J3060 processor
Memoria	Soporta DDR3L 1600/1066 Doble Canal (1.35V/1.5V) 2x DDR3L U-DIMM Ranura de memoria Soporta hasta 16 GB Memoria Cada DIMM soporta un modulo non-ECC 512MB/ 1/ 2/ 4/ 8 GB DDR3L *Por favor consultar con www.biostar.com.tw para la lista de compatibilidad con el memoria.
Almacenamiento de información	Conector 2x SATA 6Gb/s, Soporta nativo AHCI modo
LAN	Realtek RTL8111H 10/ 100/ 1000 Mb/s auto negociación, capacidad dúplex Mitad/Completo
Códec Audio	ALC662 Canales Audio de Alta Definición 5.1
USB	Ranura 6x USB 2.0 (4 en las entradas/salidas posteriores y 4 por los distribuidores internos) Ranura 4x USB 3.0 (2 en las entradas/salidas posteriores y 2 por los distribuidores internos)
Ranuras de Extinción	Ranura 1x PCIe 2.0 x16 (x1) Ranura 2x PCIe 2.0 x1
Panel trasero de E/S	Ratón 1x PS/2 Teclado 1x PS/2 Ranura 1x DVI-D Ranura 1x VGA Ranura 1x LAN Ranura 2x USB 3.0 Ranura 2x USB 2.0 Socket audio 3x
Conectores en placa	Conector 2x SATA 6Gb's Conector con 24 patillas x1 Distribuidor 2x USB 2.0 (cada distribuidor soporta 2 ranuras USB 2.0) Distribuidor 1x USB 3.0 (cada distribuidor soporta 2 ranuras USB 3.0) Conector Ventilador Sistema x2 Distribuidor Panel Frontal x1 Distribuidor Audio Frontal x1 Distribuidor CMOS Directo x1 Distribuidor Ranura Impresora x1 Distribuidor Ranura Serie x1
Factor de Forma	Factor de Forma microATX, 226 mm x 188 mm
Soporte OS	Windows 7 (64bit)/ Windows 8.1 (64bit)/ Windows 10 Biostar reserva su derecho de añadir o retirar el soporte para cada OS con o sin notificación.

Thai

คุณสมบัติ	
ซีพียู	J3160MD: Intel® Celeron® J3160 processor J3060MD: Intel® Celeron® J3060 processor
หน่วยความจำ	สนับสนุน Dual Channel DDR3L 1600/1066 (1.35V/1.5V) รองรับหน่วยความจำ 2 สล็อต DDR3L U-DIMM สูงสุดถึง 16 GB ทุก DIMM สนับสนุนโมดูล non-ECC 512MB/ 1/ 2/ 4/ 8 GB DDR3L * เข้าชมได้ที่ www.biostar.com.tw สำหรับรายการหน่วยความจำที่สนับสนุน
สตอเรจ	2x SATA 6Gb/s พอร์ตเชื่อมต่อ สนับสนุน AHCI
แลน	Realtek RTL 8111H 10/ 100/ 1000 Mb/s การเจรจาอัตโนมัติ, ความสามารถในการเพิกซ์ Half / Full
ออดิโอ โคนเดค	ALC662 5.1 Channels, High Definition Audio
ยูเอสบี	6x USB 2.0 พอร์ต (2 พอร์ตด้านหลัง I/O และ 4 พอร์ต ผ่านพอร์ตเชื่อมต่อด้านใน) 4x USB 3.0 พอร์ต (2 พอร์ตด้านหลัง I/O และ 2 พอร์ต ผ่านพอร์ตเชื่อมต่อด้านใน)
สล็อตขยายเพิ่มเติม	1x PCIe 2.0 x16 สล็อต (x1) 2x PCIe 2.0 x1 สล็อต
พอร์ต I/O ด้านหลัง	1x PS/2 เมาส์ 1x PS/2 คีย์บอร์ด 1x VGA พอร์ต 1x DVI-D พอร์ต 1x LAN พอร์ต 2x USB 3.0 พอร์ต 2x USB 2.0 พอร์ต 3x Audio Jack
พอร์ต I/O ด้านใน	2x SATA 6Gb/s พอร์ตเชื่อมต่อ 1x 24-Pin Power พอร์ตเชื่อมต่อ 2x USB 2.0 พอร์ตเชื่อมต่อ (หัวเชื่อมต่อทุกตัวรองรับ 2 พอร์ต USB 2.0) 1x USB 3.0 พอร์ตเชื่อมต่อ (หัวเชื่อมต่อทุกตัวรองรับ 2 พอร์ต USB 3.0) 2x พอร์ตเชื่อมต่อระบบ Fan 1x พอร์ตเชื่อมต่อแผงด้านหน้า 1x พอร์ตเชื่อมต่อออลิไอด้านหน้า 1x พอร์ต Clear CMOS 1x พอร์ตเชื่อมต่อปริ้นเตอร์ 1x พอร์ตเชื่อมต่อ Serial
รูปแบบจากโรงงาน	microATX จากโรงงาน, 226 มม. x 188 มม.
สนับสนุน OS	Windows 7 (64bit)/ Windows 8.1 (64bit)/ Windows 10 Biostar ขอสงวนสิทธิ์ในการเพิ่มหรือถอดการสนับสนุนสำหรับระบบปฏิบัติการ OS ต่างๆ โดยไม่ต้องแจ้งให้ทราบล่วงหน้า

2016/02/03