

FCC Information and Copyright

This equipment has been tested and found to comply with the limits of a Class B digital device, pursuant to Part 15 of the FCC Rules. These limits are designed to provide reasonable protection against harmful interference in a residential installation. This equipment generates, uses, and can radiate radio frequency energy and, if not installed and used in accordance with the instructions, may cause harmful interference to radio communications. There is no guarantee that interference will not occur in a particular installation.

The vendor makes no representations or warranties with respect to the contents here and specially disclaims any implied warranties of merchantability or fitness for any purpose. Further the vendor reserves the right to revise this publication and to make changes to the contents here without obligation to notify any party beforehand.

Duplication of this publication, in part or in whole, is not allowed without first obtaining the vendor's approval in writing.

The content of this user's manual is subject to be changed without notice and we will not be responsible for any mistakes found in this user's manual. All the brand and product names are trademarks of their respective companies.



Dichiarazione di conformità sintetica

Ai sensi dell'art. 2 comma 3 del D.M. 275 del 30/10/2002

Si dichiara che questo prodotto è conforme alle normative vigenti e soddisfa i requisiti essenziali richiesti dalle direttive

2004/108/CE, 2006/95/CE e 1999/05/CE

quando ad esso applicabili

Short Declaration of conformity

We declare this product is complying with the laws in force and meeting all the essential requirements as specified by the directives

2004/108/CE, 2006/95/CE and 1999/05/CE

whenever these laws may be applied

Table of Contents

| | |
|---|-----------|
| Chapter 1: Introduction | 1 |
| 1.1 Before You Start | 1 |
| 1.2 Package Checklist | 1 |
| 1.3 Motherboard Features | 2 |
| 1.4 Rear Panel Connectors | 3 |
| 1.5 Motherboard Layout | 4 |
| Chapter 2: Hardware Installation | 5 |
| 2.1 Installing Central Processing Unit (CPU) | 5 |
| 2.2 FAN Headers | 7 |
| 2.3 Installing System Memory | 8 |
| 2.4 Connectors and Slots | 10 |
| Chapter 3: Headers & Jumpers Setup | 13 |
| 3.1 How to Setup Jumpers | 13 |
| 3.2 Detail Settings | 13 |
| Chapter 4: Useful Help | 16 |
| 4.1 Driver Installation Note | 16 |
| 4.2 Software | 17 |
| 4.3 Extra Information | 21 |
| 4.4 AMI BIOS Beep Code | 22 |
| 4.5 Troubleshooting | 23 |
| Appendix: SPEC In Other Languages | 24 |
| German | 24 |
| French | 26 |
| Italian | 28 |
| Spanish | 30 |
| Portuguese | 32 |
| Polish | 34 |
| Russian | 36 |
| Arabic | 38 |
| Japanese | 40 |

CHAPTER 1: INTRODUCTION

1.1 BEFORE YOU START

Thank you for choosing our product. Before you start installing the motherboard, please make sure you follow the instructions below:

- Prepare a dry and stable working environment with sufficient lighting.
- Always disconnect the computer from power outlet before operation.
- Before you take the motherboard out from anti-static bag, ground yourself properly by touching any safely grounded appliance, or use grounded wrist strap to remove the static charge.
- Avoid touching the components on motherboard or the rear side of the board unless necessary. Hold the board on the edge, do not try to bend or flex the board.
- Do not leave any unfastened small parts inside the case after installation. Loose parts will cause short circuits which may damage the equipment.
- Keep the computer from dangerous area, such as heat source, humid air and water.
- The operating temperatures of the computer should be 0 to 45 degrees Celsius.

1.2 PACKAGE CHECKLIST

- ⚡ Serial ATA Cable x2
- ⚡ Rear I/O Panel for ATX Case x1
- ⚡ User's Manual x1
- ⚡ Fully Setup Driver DVD x1

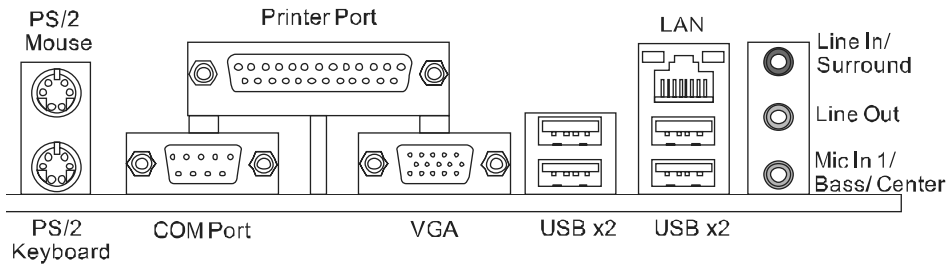
Note: The package contents may be different due to area or your motherboard version.

1.3 MOTHERBOARD FEATURES

| SPEC | | |
|---------------------|--|--|
| CPU | Socket 1155 Intel Core i7 / i5 / i3 / Pentium / Celeron processor | Supports Execute Disable Bit / Enhanced Intel SpeedStep® / Intel Architecture-64 / Extended Memory 64 Technology / Virtualization Technology / Hyper Threading |
| Chipset | Intel H61 | |
| Super I/O | IT8728 Provides the most commonly used legacy Super I/O functionality Low Pin Count Interface | Environment Control initiatives Hardware Monitor Controller Fan Speed Controller ITE's "Smart Guardian" function |
| Main Memory | DDR3 DIMM Slots x 2 Max Memory Capacity 16GB Each DIMM supports 512MB/ 1GB/2GB/4GB/8GB DDR3 | Dual Channel Mode DDR3 memory module Supports DDR3 1066 / 1333 / 1600 (depending on CPU) Registered DIMM and ECC DIMM is not supported |
| SATA 2 | Integrated Serial ATA Controller | Data transfer rates up to 3.0 Gb/s SATA Version 2.0 specification compliant |
| LAN | RTL8111F | 10 / 100 /1000Mb/s auto negotiation Half / Full duplex capability |
| Sound Codec | ALC662 | 5.1 channels audio out High Definition Audio |
| Slots | PCI-E Gen3x16 slot (depending on CPU) x1 | Supports PCI-E Gen2/3 x16 expansion card |
| | PCI-E Gen2 x1 slot x2 | Supports PCI-E Gen2 x1 expansion card |
| On Board Connectors | SATA2 Connector x4 | Each connector supports 1 SATA2 device |
| | Front Panel Connector x1 | Supports front panel facilities |
| | Front Audio Connector x1 | Supports front panel audio function |
| | CPU Fan Header x1 | CPU Fan power supply (with Smart Fan function) |
| | System Fan Header x1 | System Fan Power supply |
| | Clear CMOS Header x1 | Restore CMOS data to factory default |
| | USB2.0 Connector x2 | Each connector supports 2 front panel USB2.0 ports |
| | Power Connector (24pin) x1 | Connects to Power supply |
| Rear Panel I/O | Power Connector (4pin) x1 | Connects to Power supply |
| | PS/2 Keyboard x1 | Connects to PS/2 Keyboard |
| | PS/2 Mouse x1 | Connects to PS/2 Mouse |
| | VGA Port x1 | Connect to D-SUB monitor |

| SPEC | | |
|--------------|------------------------|---|
| Serial Port | x1 | Provide RS-232 Serial connection |
| Printer Port | x1 | Provide 1 connection for printer |
| LAN port | x1 | Connect to RJ-45 ethernet cable |
| USB2.0 Port | x4 | Connect to USB2.0 devices |
| Audio Jack | x3 | Provide Audio-In/Out and Mic. connection |
| Board Size | 180 (W) x 226 (L) mm | uATX |
| OS Support | Windows XP / Vista / 7 | Biostar reserves the right to add or remove support for any OS with or without notice |

1.4 REAR PANEL CONNECTORS

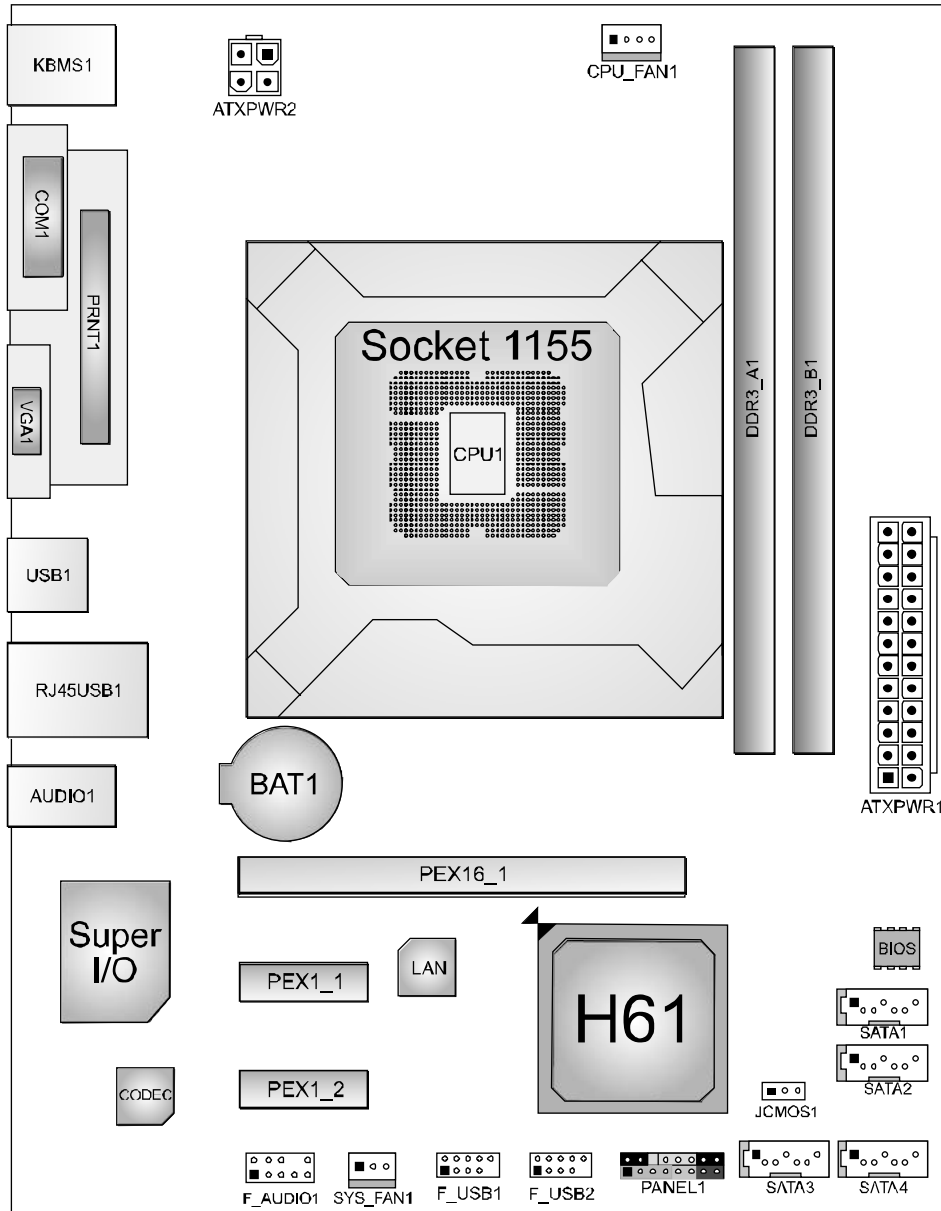


NOTE: VGA Output require an Intel Core family processor with Intel Graphics Technology.

NOTE: Since the audio chip supports High Definition Audio Specification, the function of each audio jack can be defined by software. The input / output function of each audio jack listed above represents the default setting. However, when connecting external microphone to the audio port, please use the Line In (Blue) and Mic In (Pink) audio jack.

NOTE: Maximum resolution:
VGA: 2048 x 1536 @75Hz

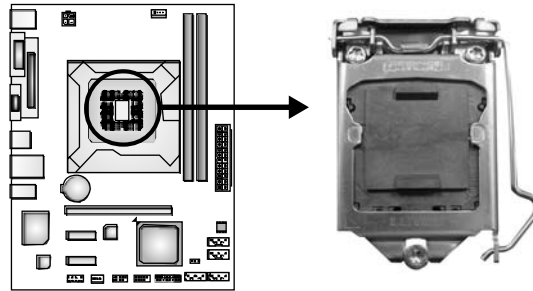
1.5 MOTHERBOARD LAYOUT



Note: ■ represents the 1st pin.

CHAPTER 2: HARDWARE INSTALLATION

2.1 INSTALLING CENTRAL PROCESSING UNIT (CPU)

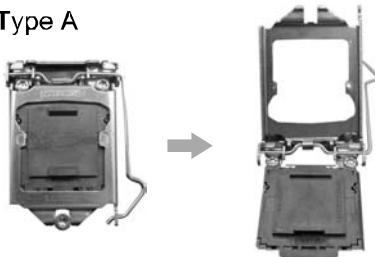


Notice:

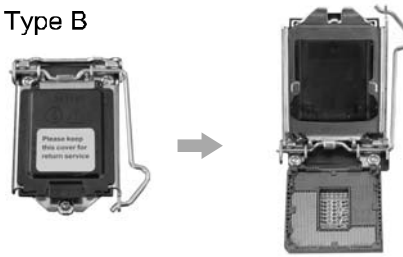
1. Remove Pin Cap before installation, and make good preservation for future use. When the CPU is removed, cover the Pin Cap on the empty socket to ensure pin legs won't be damaged.
2. The motherboard might equip with two different types of pin cap. Please refer below instruction to remove the pin cap.

Step 1: Pull the socket locking lever out from the socket then raise the lever and load plate to the fully open position.

Type A

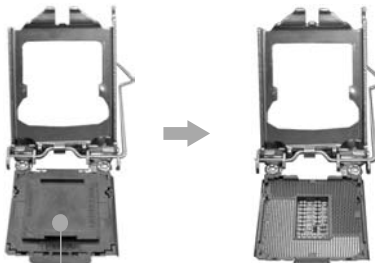


Type B



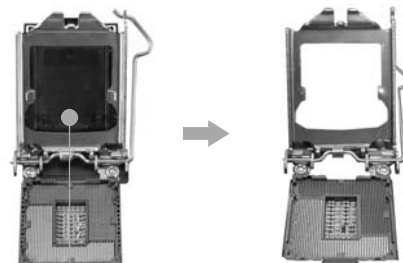
Step 2: Remove the Pin Cap.

Type A



Pin Cap

Type B



Pin Cap

Motherboard Manual

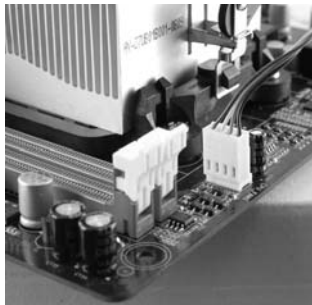
Step 3: Hold processor with your thumb and index fingers, oriented as shown. Align the notches with the socket. Lower the processor straight down without tilting or sliding the processor in the socket.



Step 4: Close the load plate. Pressing down on the load plate, close and engage the socket lever.



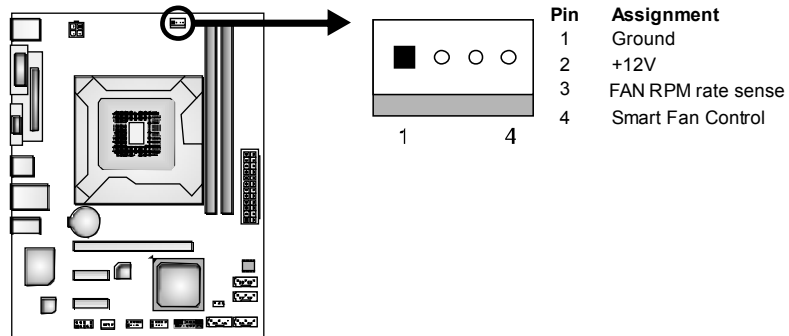
Step 5: Put the CPU Fan and heatsink assembly on the CPU and buckle it on the retention frame. Connect the CPU FAN power cable into the CPU_FAN1 to complete the installation.



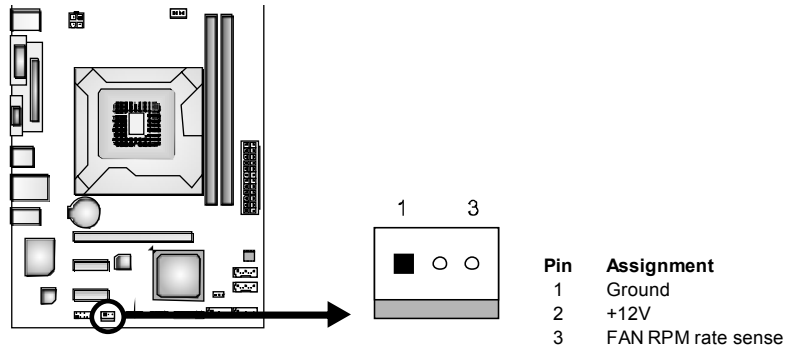
2.2 FAN HEADERS

These fan headers support cooling-fans built in the computer. The fan cable and connector may be different according to the fan manufacturer. Connect the fan cable to the connector while matching the black wire to pin#1.

CPU_FAN1: CPU Fan Header



SYS_FAN1: System Fan Header

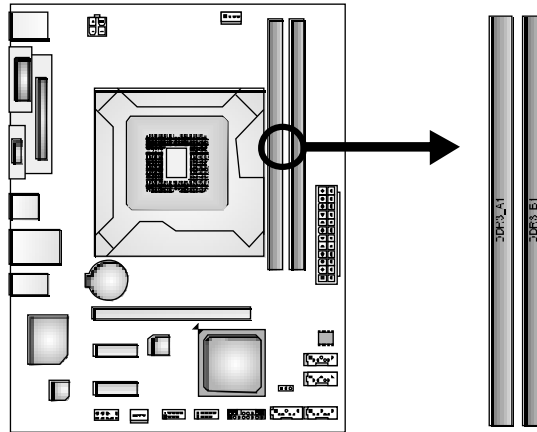


Note:

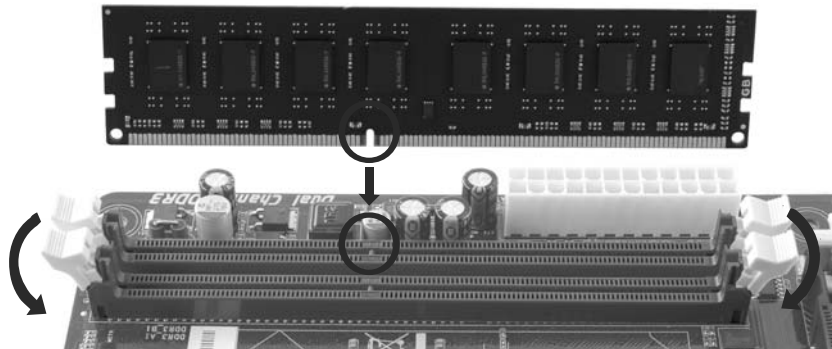
The SYS_FAN1 support 3-pin head connectors; the CPU_FAN1 supports 4-pin head connector. When connecting with wires onto connectors, please note that the red wire is the positive and should be connected to pin#2, and the black wire is Ground and should be connected to GND.

2.3 INSTALLING SYSTEM MEMORY

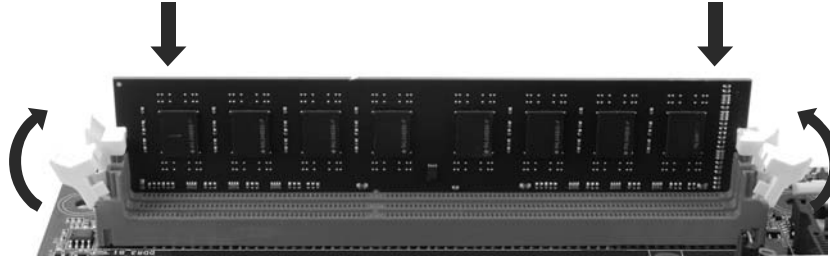
A. Memory Modules



1. Unlock a DIMM slot by pressing the retaining clips outward. Align a DIMM on the slot such that the notch on the DIMM matches the



2. Insert the DIMM vertically and firmly into the slot until the retaining chip snap back in place and the DIMM is properly seated.



Note:

If the DIMM does not go in smoothly, do not force it. Pull it all the way out and try again.

B. Memory Capacity

| DIMM Socket Location | DDR3 Module | Total Memory Size |
|----------------------|-----------------------|-------------------|
| DDR3_A1 | 512MB/1GB/2GB/4GB/8GB | Max is 16GB. |
| DDR3_B1 | 512MB/1GB/2GB/4GB/8GB | |

C. Dual Channel Memory Installation

Please refer to the following requirements to activate Dual Channel function: Install memory module of the same density in pairs, shown in the table.

| Dual Channel Status | DDR3_A1 | DDR3_B1 |
|---------------------|---------|---------|
| Disabled | O | X |
| Disabled | X | O |
| Enabled | O | O |

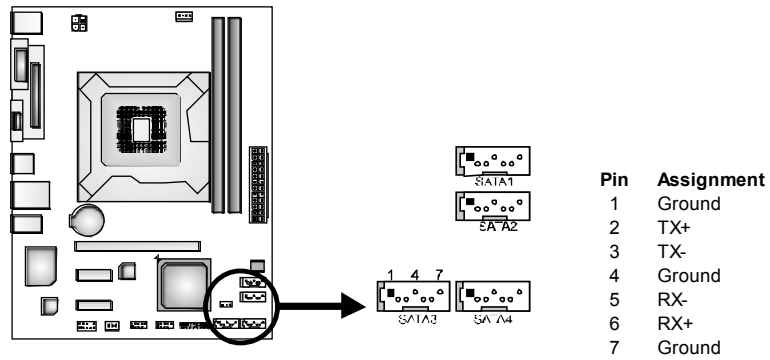
(O means memory installed; X, not installed.)

The DRAM bus width of the memory module must be the same(x8 or x16)

2.4 CONNECTORS AND SLOTS

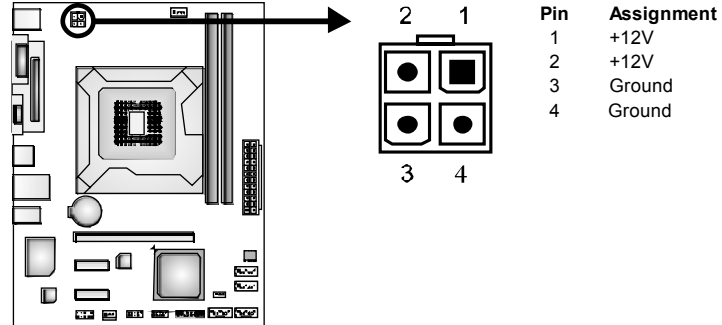
SATA1~SATA4: Serial ATA Connectors

The motherboard has a PCI to SATA Controller with 4 channels SATA2 interface, it satisfies the SATA 2.0 spec and with transfer rate of 3.0Gb/s.



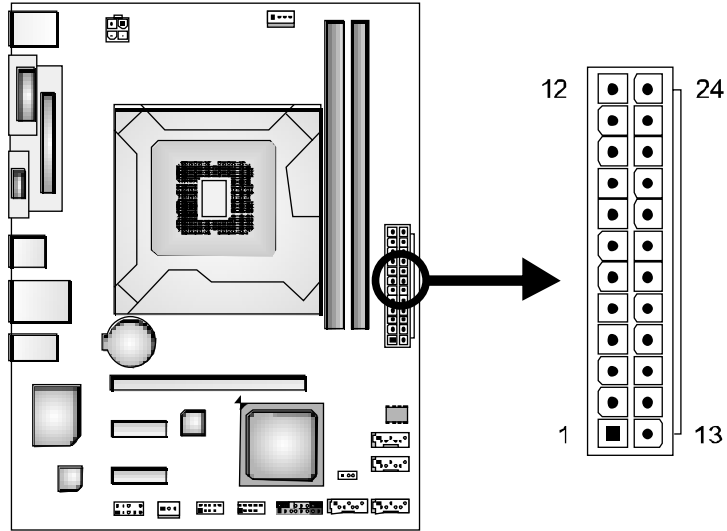
ATXPWR2: ATX Power Source Connector

This connector provides +12V to CPU power circuit.



ATXPWR1: ATX Power Source Connector

This connector allows user to connect 24-pin power connector on the ATX power supply.



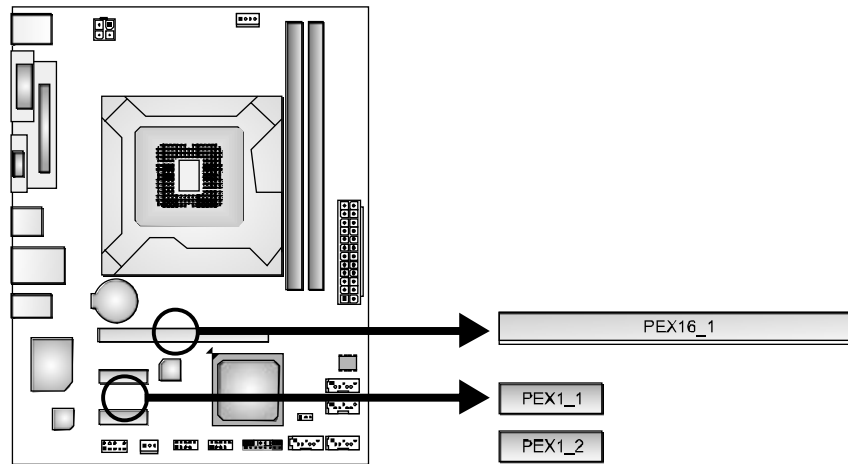
| Pin | Assignment | Pin | Assignment |
|-----|------------|-----|--------------------|
| 13 | +3.3V | 1 | +3.3V |
| 14 | -12V | 2 | +3.3V |
| 15 | Ground | 3 | Ground |
| 16 | PS_ON | 4 | +5V |
| 17 | Ground | 5 | Ground |
| 18 | Ground | 6 | +5V |
| 19 | Ground | 7 | Ground |
| 20 | NC | 8 | PW_OK |
| 21 | +5V | 9 | Standby Voltage+5V |
| 22 | +5V | 10 | +12V |
| 23 | +5V | 11 | +12V |
| 24 | Ground | 12 | +3.3V |

PEX16_1: PCI-Express Gen3 x16 Slot

- PCI-Express 3.0 compliant.
- Maximum theoretical realized bandwidth of 16GB/s simultaneously per direction, for an aggregate of 32GB/s totally.
- PCI-E 3.0 is supported by Core i7-3xxx / i5-3xxx CPU.

PEX1_1/ PEX1_2: PCI-Express Gen2 x1 Slot

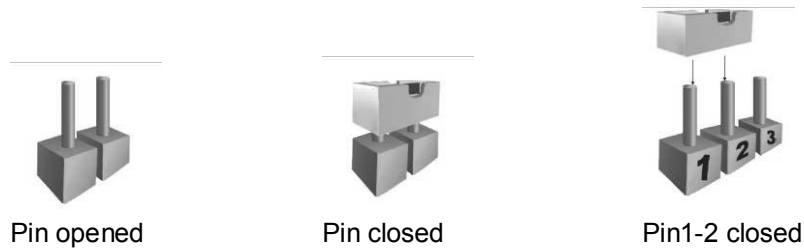
- PCI-Express 2.0 compliant.
- Data transfer bandwidth up to 500MB/s per direction; 1GB/s in total.
- PCI-Express supports a raw bit-rate of 5.0Gb/s on the data pins.



CHAPTER 3: HEADERS & JUMPERS SETUP

3.1 HOW TO SETUP JUMPERS

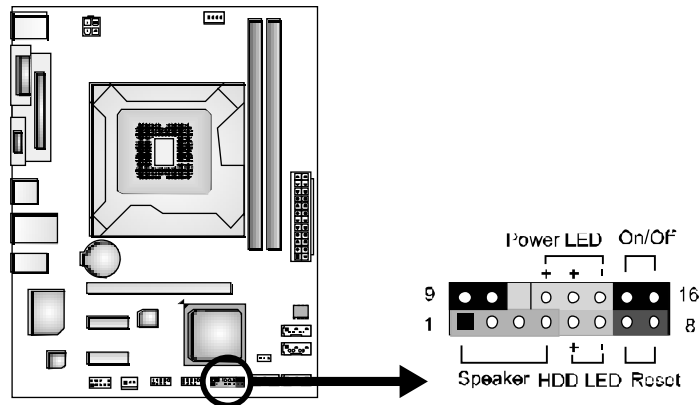
The illustration shows how to set up jumpers. When the jumper cap is placed on pins, the jumper is “close”, if not, that means the jumper is “open”.



3.2 DETAIL SETTINGS

PANEL1: Front Panel Header

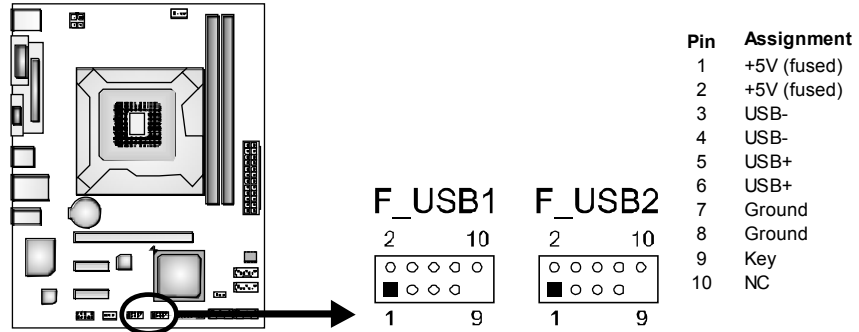
This 16-pin connector includes Power-on, Reset, HDD LED, Power LED, and speaker connection. It allows user to connect the PC case’s front panel switch functions.



| Pin | Assignment | Function | Pin | Assignment | Function |
|-----|---------------|-------------------|-----|---------------|-----------------|
| 1 | +5V | Speaker Connector | 9 | N/A | Power LED |
| 2 | N/A | | 10 | N/A | |
| 3 | N/A | | 11 | N/A | |
| 4 | Speaker | | 12 | Power LED (+) | |
| 5 | HDD LED (+) | Hard drive LED | 13 | Power LED (+) | Power LED |
| 6 | HDD LED (-) | | 14 | Power LED (-) | |
| 7 | Ground | Reset button | 15 | Power button | Power-on button |
| 8 | Reset control | | 16 | Ground | |

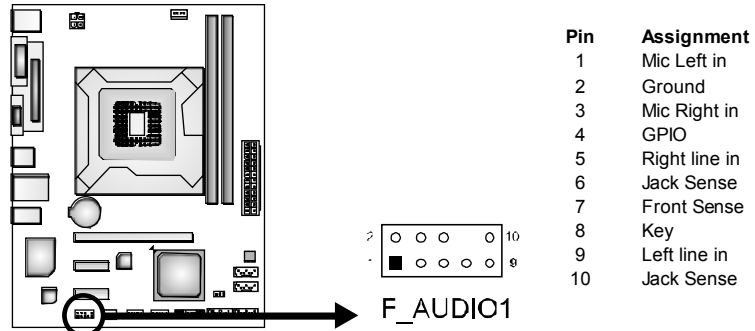
F_USB1/F_USB2: Headers for USB 2.0 Ports at Front Panel

These headers allow user to connect additional USB cable on the PC front panel, and also can be connected with internal USB devices, like USB card reader.



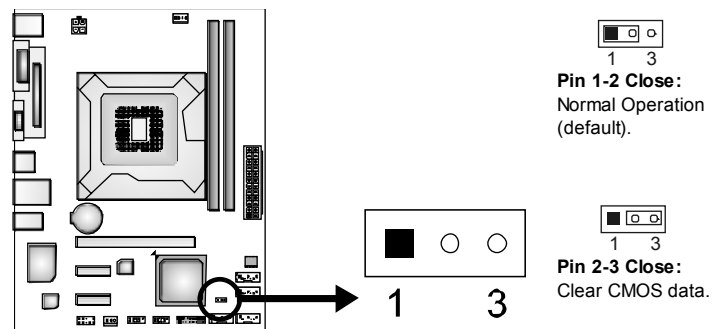
F_AUDIO1: Front Panel Audio Header

This header allows user to connect the front audio output cable with the PC front panel..



JCMOS1: Clear CMOS Header

Placing the jumper on pin2-3 allows user to restore the BIOS safe setting and the CMOS data. Please carefully follow the procedures to avoid damaging the motherboard.



※ Clear CMOS Procedures:

1. Remove AC power line.
2. Set the jumper to "Pin 2-3 close".
3. Wait for five seconds.
4. Set the jumper to "Pin 1-2 close".
5. Power on the AC.
6. Load Optimal Defaults and save settings in CMOS.

CHAPTER 4: USEFUL HELP

4.1 DRIVER INSTALLATION NOTE

After you installed your operating system, please insert the Fully Setup Driver CD into your optical drive and install the driver for better system performance.

You will see the following window after you insert the CD



The setup guide will auto detect your motherboard and operating system.

Note:

If this window didn't show up after you insert the Driver CD, please use file browser to locate and execute the file **SETUP.EXE** under your optical drive.

A. Driver Installation

To install the driver, please click on the Driver icon. The setup guide will list the compatible driver for your motherboard and operating system. Click on each device driver to launch the installation program.

B. Software Installation

To install the software, please click on the Software icon. The setup guide will list the software available for your system, click on each software title to launch the installation program.

C. Manual

Aside from the paperback manual, we also provide manual in the Driver CD. Click on the Manual icon to browse for available manual.

Note:

You will need Acrobat Reader to open the manual file. Please download the latest version of Acrobat Reader software from <http://www.adobe.com/products/acrobat/readstep2.html>

4.2 SOFTWARE

Installing Software

1. Insert the Setup CD to the optical drive. The drivers installation program would appear if the Autorun function has been enabled.
2. Select **Software Installation**, and then click on the respective software title.
3. Follow the on-screen instructions to complete the installation.

Launching Software

After the installation process, you will see the software icon “eHOT Line” / “BIOS Update” appears on the desktop. Double-click the icon to launch the utility.

eHot-Line (Optional)

eHot-Line is a convenient utility that helps you to contact with our Tech-Support system. This utility will collect the system information which is useful for analyzing the problem you may have encountered, and then send these information to our tech-support department to help you fix the problem.



Before you use this utility, please set Outlook Express as your default e-mail client application program.

*represents important information that you must provide. Without this information, you may not be able to send out the mail.

This block will show the information which would be collected in the mail.

*Describe condition of your system.

*Select your area or the area close to you.

Provide the e-mail address that you would like to send the copy to.

*Provide the name of the memory module manufacturer.

Provide the name of the power supply manufacturer and the model no.

Send the mail out.

Save these information to a .txt file

Exit this dialog.

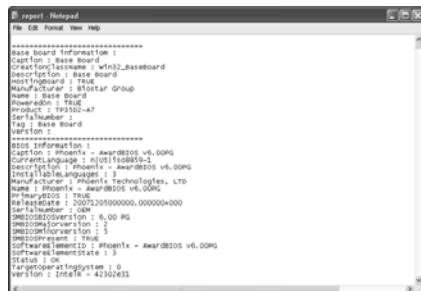
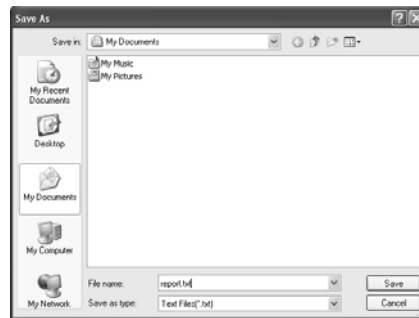
Motherboard Manual

After filling up this information, click **“Send”** to send the mail out. A warning dialog would appear asking for your confirmation; click **“Send”** to confirm or **“Do Not Send”** to cancel.



If you want to save this information to a .txt file, click **“Save As...”** and then you will see a saving dialog appears asking you to enter file name.

Enter the file name and then click **“Save”**. Your system information will be saved to a .txt file.



Open the saved .txt file, you will see your system information including motherboard/BIOS/CPU/video/device/OS information. This information is also concluded in the sent mail.



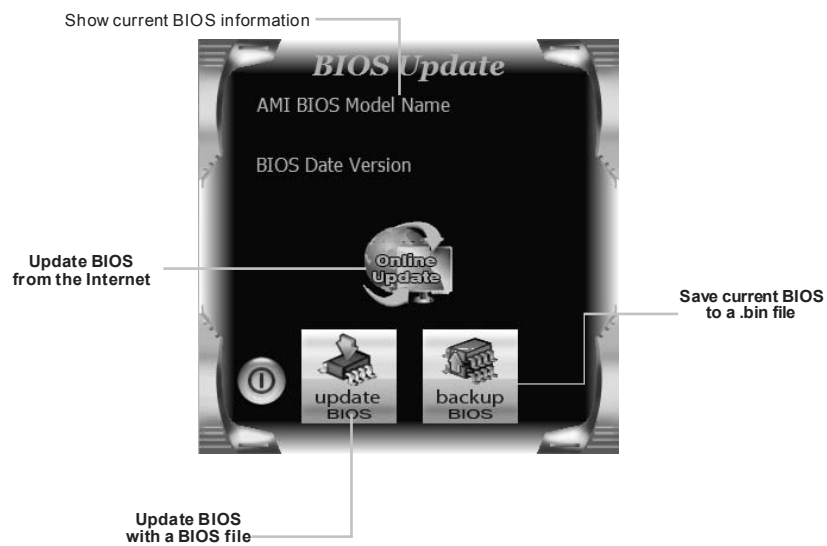
We will not share customer’s data with any other third parties, so please feel free to provide your system information while using eHot-Line service.



If you are not using Outlook Express as your default e-mail client application, you may need to save the system information to a .txt file and send the file to our tech support with other e-mail application. Go to the following web <http://www.biostar.com.tw/app/en-us/about/contact.php> for getting our contact information.

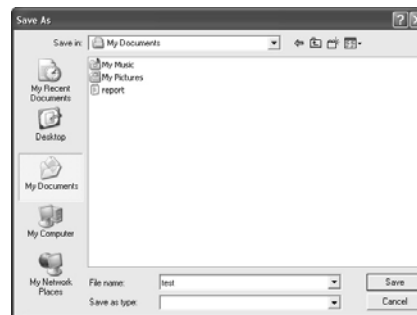
BIOS Update

BIOS Update is a convenient utility which allows you to update your motherboard BIOS under Windows system.



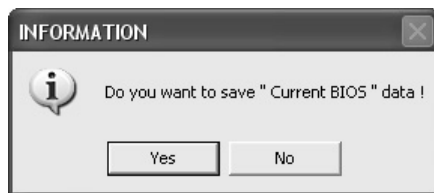
<Backup BIOS>

Once click on this button, the saving dialog will show. Choose the position to save file and enter file name. (We recommend that the file name should be English/number and no longer than 7 characters.) Then click **Save**.



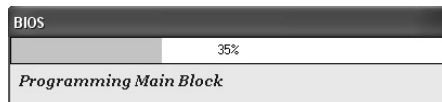
<Update BIOS>

Before doing this, please download the proper BIOS file from the website.



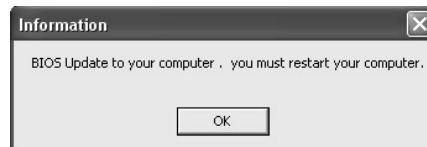
Then click Update BIOS button, a dialog will show for asking you backup current BIOS. Click **Yes** for BIOS backup and refer to the Backup BIOS procedure; or click **No** to skip this procedure.


After the BIOS Backup procedure, the open dialog will show for requesting the BIOS file which is going to be updated. Please choose the proper BIOS file for updating, then click on **Open**.



The utility will update BIOS with the proper BIOS file, and this process may take minutes. Please do not open any other applications during this process.

After the BIOS Update process, click on **OK** to restart the system.



While the system boots up and the full screen logo shows, press  <Delete> key to enter BIOS setup.

In the BIOS setup, use the **Load Optimized Defaults** function and then **Save and Exit Setup** to exit BIOS setup. BIOS Update is completed.



All the information and content above about the software are subject to be changed without notice. For better performance, the software is being continuously updated. The information and pictures described above are for your reference only. The actual information and settings on board may be slightly different from this manual.

4.3 EXTRA INFORMATION

CPU Overheated

If the system shuts down automatically after system is powered on for seconds, the phenomenon means the CPU protection function has been activated.

When the CPU is over heated, the motherboard will shutdown automatically to avoid a damage of the CPU, and the system may not power on again.

In this case, please double check:

1. The CPU cooler surface is placed evenly with the CPU surface.
2. CPU fan is rotated normally.
3. CPU fan speed is fulfilling with the CPU speed.

After confirmed, please follow steps below to relief the CPU protection function.

1. Remove the power cord from power supply for seconds.
2. Wait for seconds.
3. Plug in the power cord and boot up the system.

Or you can:

1. Clear the CMOS data.
(See "Close CMOS Header: JCMOS1" section)
2. Wait for seconds.
3. Power on the system again.

4.4 AMI BIOS BEEP CODE

Boot Block Beep Codes

| Number of Beeps | Description |
|-----------------|--|
| 1 | No media present. (Insert diskette in floppy drive A:) |
| 2 | "AMIBOOT.ROM" file not found in root directory of diskette in A: |
| 3 | Insert next diskette if multiple diskettes are used for recovery |
| 4 | Flash Programming successful |
| 5 | File read error |
| 7 | No Flash EPROM detected |
| 10 | Flash Erase error |
| 11 | Flash Program error |
| 12 | "AMIBOOT.ROM" file size error |
| 13 | BIOS ROM image mismatch (file layout does not match image present in flash device) |

POST BIOS Beep Codes

| Number of Beeps | Description |
|-----------------|---|
| 1 | Memory refresh timer error |
| 3 | Base memory read/write test error |
| 6 | Keyboard controller BAT command failed |
| 7 | General exception error (processor exception interrupt error) |
| 8 | Display memory error (system video adapter) |

Troubleshooting POST BIOS Beep Codes

| Number of Beeps | Troubleshooting Action |
|-----------------|--|
| 1, 3 | Reseat the memory, or replace with known good modules. |
| 6, 7 | <p>Fatal error indicating a serious problem with the system. Consult your system manufacturer. Before declaring the motherboard beyond all hope, eliminate the possibility of interference by a malfunctioning add-in card. Remove all expansion cards except the video adapter.</p> <ul style="list-style-type: none"> ● If beep codes are generated when all other expansion cards are absent, consult your system manufacturer's technical support. ● If beep codes are not generated when all other expansion cards are absent, one of the add-in cards is causing the malfunction. Insert the cards back into the system one at a time until the problem happens again. This will reveal the malfunctioning card. |
| 8 | If the system video adapter is an add-in card, replace or reseat the video adapter. If the video adapter is an integrated part of the system board, the board may be faulty. |

4.5 TROUBLESHOOTING

| Probable | Solution |
|---|---|
| <ol style="list-style-type: none"> There is no power in the system. Power LED does not shine; the fan of the power supply does not work Indicator light on keyboard does not shine. | <ol style="list-style-type: none"> Make sure power cable is securely plugged in. Replace cable. Contact technical support. |
| System is inoperative. Keyboard lights are on, power indicator lights are lit, and hard drives are running. | Using even pressure on both ends of the DIMM, press down firmly until the module snaps into place. |
| System does not boot from a hard disk drive, but can be booted from optical drive. | <ol style="list-style-type: none"> Check cable running from disk to disk controller board. Make sure both ends are securely plugged in; check the drive type in the standard CMOS setup. Backing up the hard drive is extremely important. All hard disks are capable of breaking down at any time. |
| System only boots from an optical drive. Hard disks can be read, applications can be used, but system fails to boot from a hard disk. | <ol style="list-style-type: none"> Back up data and applications files. Reformat the hard drive. Re-install applications and data using backup disks. |
| Screen message shows "Invalid Configuration" or "CMOS Failure." | Review system's equipment. Make sure correct information is in setup. |
| System cannot boot after user installs a second hard drive. | <ol style="list-style-type: none"> Set master/slave jumpers correctly. Run SETUP program and select correct drive types. Call the drive manufacturers for compatibility with other drives. |

APPENDIX: SPEC IN OTHER LANGUAGES

GERMAN

| <i>Spezifikationen</i> | | |
|-----------------------------|--|---|
| CPU | Socket 1155 Intel Core i7 / i5 / i3 / Pentium / Celeron Prozessoren | Unterstützt Execute Disable Bit / Enhanced Intel SpeedStep® / Intel Architecture-64 / Extended Memory 64 Technology / Virtualization Technology / Hyper Threading |
| Chipsatz | Intel H61 | |
| Super E/A | IT8728 Bietet die häufig verwendeten alten Super E/A-Funktionen. Low Pin Count-Schnittstelle | Umgebungskontrolle, Hardware-Überwachung Lüfterdrehzahl-Controller/-Überwachung "Smart Guardian"-Funktion von ITE |
| Arbeitsspeicher | DDR3 DIMM-Steckplätze x 2 Max. 16GB Arbeitsspeicher Jeder DIMM unterstützt 512MB/ 1GB/2GB/4GB/8GB DDR3. | Dual-Kanal DDR3 Speichermodul Unterstützt DDR3 1066 / 1333 / 1600 registrierte DIMMs. ECC DIMMs werden nicht unterstützt. |
| SATA 2 | Integrierter Serial ATA-Controller | Datentransferrate bis zu 3.0Gb/s Konform mit der SATA-Spezifikation Version 2.0 |
| LAN | RTL8111F | 10/100/1000 Mb/s Auto-Negotiation Halb-/ Vollduplex-Funktion |
| HD Audio-Unterstützung | ALC662 | Unterstützt High-Definition Audio 5.1-Kanal-Audioausgabe |
| Steckplätze | PCI-E Gen3 x 16 Steckplatz x1 PCI-E Gen2 x1-Steckplatz x2 | (je nach CPU) |
| Onboard-Anschluss | SATA2-Anschluss x4 | Jeder Anschluss unterstützt 1 SATA2-Laufwerk |
| | Fronttafelanschluss x1 | Unterstützt die Fronttafel-funktionen |
| | Front-Audioanschluss x1 | Unterstützt die Fronttafel-Audioanschlussfunktion |
| | CPU-Lüfter-Sockel x1 | CPU-Lüfterstromversorgungsanschluss (mit Smart Fan-Funktion) |
| | System-Lüfter-Sockel x1 | System-Lüfter-Stromversorgungsanschluss |
| | "CMOS löschen"-Sockel x1 | |
| | USB2.0-Anschluss x2 | Jeder Anschluss unterstützt 2 Fronttafel-USB2.0-Anschlüsse |
| | Stromanschluss (24-polig) x1 | |
| Stromanschluss (4-polig) x1 | | |

| Spezifikationen | | | |
|------------------------|-------------------------|--|--|
| Rückseiten-E /A | PS/2-Tastatur | x1 | |
| | PS/2-Maus | x1 | |
| | VGA-Anschluss | x1 | |
| | Serieller Anschluss | x1 | |
| | Druckeranschluss | x1 | |
| | LAN-Anschluss | x1 | |
| | USB2.0-Anschluss | x4 | |
| Audioanschluss | x3 | | |
| Platinengröße | 180 mm (B) X 226 mm (L) | | |
| OS-Unterstützung | Windows XP / Vista / 7 | Biostar behält sich das Recht vor, ohne Ankündigung die Unterstützung für ein Betriebssystem hinzuzufügen oder zu entfernen. | |

FRENCH

| <i>SPEC</i> | | |
|--------------------------|---|--|
| UC | Socket 1155 Processeurs Intel Core i7 / i5 / i3 / Pentium / Celeron | Prend en charge les technologies d'exécution de bit de désactivation / Intel SpeedStep® optimisée/ d'architecture Intel 64 / de mémoire étendue 64 / de virtualisation / Hyper Threading |
| Chipset | Intel H61 | |
| Super E/S | IT8728 Fournit la fonctionnalité de Super E/S patrimoniales la plus utilisée. Interface à faible compte de broches | Initiatives de contrôle environnementales, Moniteur de matériel Contrôleur /moniteur de vitesse de ventilateur Fonction "Gardien intelligent" de l'ITE |
| Mémoire principale | Fentes DDR3 DIMM x 2 Capacité mémoire maximale de 16 Go Chaque DIMM prend en charge des DDR3 de 512Mo/1Go/2Go/4Go/8Go | Module de mémoire DDR3 à mode à double voie Prend en charge la DDR3 1066 / 1333 / 1600 Les DIMM à registres et DIMM avec code correcteurs d'erreurs ne sont pas prises en charge |
| SATA 2 | Contrôleur Serial ATA intégré | Taux de transfert jusqu'à 3.0Go/s. Conforme à la spécification SATA Version 2.0 |
| LAN | RTL8111F | 10/100/1000 Mb/s négociation automatique Half / Full duplex capability |
| Prise en charge audio HD | ALC662 | Prise en charge de l'audio haute définition Sortie audio à 5.1 voies |
| Fentes | Fente PCI-E Gen3 x 16 x1 (en fonction du CPU) Fente PCI-E Gen2 x1 x2 | |
| Connecteur embarqué | Connecteur SATA2 x4 | Chaque connecteur prend en charge 1 périphérique SATA2 |
| | Connecteur du panneau avant x1 | Prend en charge les équipements du panneau avant |
| | Connecteur Audio du panneau avant x1 | Prend en charge la fonction audio du panneau avant |
| | Embase de ventilateur UC x1 | Alimentation électrique du ventilateur UC (avec fonction de ventilateur intelligent) |
| | Embase de ventilateur système x1 | Alimentation électrique du ventilateur système |
| | Embase d'effacement CMOS x1 | |
| | Connecteur USB2.0 x2 | Chaque connecteur prend en charge 2 ports USB2.0 de panneau avant |

| <i>SPEC</i> | | | |
|------------------------------|---|----|---|
| | Connecteur d'alimentation (24 broches) | x1 | |
| | Connecteur d'alimentation (4 broches) | x1 | |
| E/S du panneau arrière | Clavier PS/2 | x1 | |
| | Souris PS/2 | x1 | |
| | Port VGA | x1 | |
| | Port série | x1 | |
| | Port d'imprimante | x1 | |
| | Port LAN | x1 | |
| | Port USB2.0 | x4 | |
| | Fiche audio | x3 | |
| Dimensions de la carte | 180 mm (l) X 226 mm (H) | | |
| Support SE | Windows XP / Vista / 7 | | Biostar se réserve le droit d'ajouter ou de supprimer le support de SE avec ou sans préavis |

ITALIAN

| SPECIFICA | | |
|----------------------|---|---|
| CPU | Socket 1155 Processore Intel Core i7 / i5 / i3 / Pentium / Celeron | Supporto di Execute Disable Bit / Enhanced Intel SpeedStep® / Architettura Intel 64 / Tecnologia Extended Memory 64 / Tecnologia Virtualization / Hyper Threading |
| Chipset | Intel H61 | |
| Super I/O | IT8728 Fornisce le funzionalità legacy Super I/O usate più comunemente. Interfaccia LPC (Low Pin Count) | Funzioni di controllo dell'ambiente: Monitoraggio hardware Controller / Monitoraggio velocità ventolina Funzione "Smart Guardian" di ITE |
| Memoria principale | Alloggi DIMM DDR3 x 2 Capacità massima della memoria 16GB Ciascun DIMM supporta DDR3 512MB/1GB/2GB/4GB/8GB | Modulo di memoria DDR3 a canale doppio Supporto di DDR3 1066 / 1333 / 1600 DIMM registrati e DIMM ECC non sono supportati |
| SATA 2 | Controller Serial ATA integrato | Velocità di trasferimento dei dati fino a 3.0Gb/s. Compatibile specifiche SATA Versione 2.0 |
| LAN | RTL8111F | Negoziazione automatica 10/100/1000 Mb/s Capacità Half / Full Duplex |
| Supporto audio HD | ALC662 | Supporto audio High-Definition (HD) Uscita audio 5.1 canali |
| Alloggi | Alloggio PCI-E Gen3 x16 x1 (a seconda del CPU) Alloggio PCI Express Gen2 x1 x2 | |
| Connettori su scheda | Connettore SATA2 x4 Connettore pannello frontale x1 Connettore audio frontale x1 Collettore ventolina CPU x1 | Ciascun connettore supporta 1 unità SATA2 Supporta i servizi del pannello frontale Supporta la funzione audio pannello frontale Alimentazione ventolina CPU (con funzione Smart Fan) |

| SPECIFICA | | | |
|------------------------------|---------------------------------------|----|---|
| | Collettore ventolina sistema | x1 | Alimentazione ventolina di sistema |
| | Collettore cancellazione CMOS | x1 | |
| | Connettore USB2.0 | x2 | Ciascun connettore supporta 2 porte USB2.0 pannello frontale |
| | Connettore alimentazione (24 pin) | x1 | |
| | Connettore alimentazione (4 pin) | x1 | |
| I/O pannello posteriore | Tastiera PS/2 | x1 | |
| | Mouse PS/2 | x1 | |
| | Porta VGA | x1 | |
| | Porta seriale | x1 | |
| | Porta stampante | x1 | |
| | Porta LAN | x1 | |
| | Porta USB2.0 | x4 | |
| | Connettore audio | x3 | |
| Dimensioni scheda | 180 mm (larghezza) x 226 mm (altezza) | | |
| Sistemi operativi supportati | Windows XP / Vista / 7 | | Biostar si riserva il diritto di aggiungere o rimuovere il supporto di qualsiasi sistema operativo senza preavviso. |

SPANISH

| Especificación | | |
|---|---|---|
| CPU | Socket 1155 Procesador Intel Core i7 / i5 / i3 / Pentium / Celeron | Admite Bit de deshabilitación de ejecución / Intel SpeedStep® Mejorado / Intel Architecture-64 / Tecnología Extended Memory 64 / Tecnología de virtualización / Hyper Threading |
| Conjunto de chips | Intel H61 | |
| Súper E/S | IT8728 Le ofrece las funcionalidades heredadas de uso más común Súper E/S. Interfaz de cuenta Low Pin | Iniciativas de control de entorno, Monitor hardware Controlador/monitor de velocidad de ventilador Función "Guardia inteligente" de ITE |
| Memoria principal | Ranuras DIMM DDR3 x 2 Capacidad máxima de memoria de 16GB Cada DIMM admite DDR de 512MB/1GB/2GB/4GB/8GB | Módulo de memoria DDR3 de canal Doble Admite DDR3 de 1066 / 1333 /1600 No admite DIMM registrados o DIMM compatibles con ECC |
| SATA 2 | Controlador ATA Serie Integrado | Tasas de transferencia de hasta 3.0 Gb/s. Compatible con la versión SATA 2.0 |
| Red Local | RTL8111F | Negociación de 10/100/1000 Mb/s Funciones Half / Full dúplex |
| Soporte de sonido HD | ALC662 | Soporte de sonido de Alta Definición Salida de sonido de 5.1 canales |
| Ranuras | Ranura PCI-E Gen3 x16 X1 (dependiendo de la CPU) Ranura PCI-E Gen2 x 1 X2 | |
| Conectores en placa | Conector SATA2 X4 | Cada conector soporta 1 dispositivos SATA2 |
| | Conector de panel frontal X1 | Soporta instalaciones en el panel frontal |
| | Conector de sonido frontal X1 | Soporta funciones de sonido en el panel frontal |
| | Cabecera de ventilador de CPU X1 | Fuente de alimentación de ventilador de CPU (con función Smart Fan) |
| | Cabecera de ventilador de sistema X1 | Fuente de alimentación de ventilador de sistema |
| | Cabecera de borrado de CMOS X1 | |
| | Conector USB2.0 X2 | Cada conector soporta 2 puertos USB2.0 frontales |
| Conector de alimentación (24 patillas) X1 | | |

| Especificación | | | |
|------------------------------------|--|----|--|
| | Conector de alimentación (4 patillas) | X1 | |
| Panel trasero de E/S | Teclado PS/2 | X1 | |
| | Ratón PS/2 | X1 | |
| | Puerto VGA | X1 | |
| | Puerto serie | X1 | |
| | Puerto de impresora | X1 | |
| | Puerto de red local | X1 | |
| | Puerto USB2.0 | X4 | |
| | Conector de sonido | X3 | |
| Tamaño de la placa | 180 mm. (A) X 226 Mm. (H) | | |
| Soporte de sistema operativo | Windows XP / Vista / 7 | | Biostar se reserva el derecho de añadir o retirar el soporte de cualquier SO con o sin aviso previo. |

PORTUGUESE

| ESPECIFICAÇÕES | | | |
|--------------------------------------|---|---|--|
| CPU | Socket 1155 Processador Intel Core i7 / i5 / i3 / Pentium / Celeron | Suporta as tecnologias Execute Disable Bit / Enhanced Intel SpeedStep® / Intel Architecture -64 / Extended Memory 64 / Virtualization / Hyper Threading | |
| Chipset | Intel H61 | | |
| Especificação do Super I/O | IT8728 Proporciona as funcionalidades mais utilizadas em termos da especificação Super I/O. Interface LPC (Low Pin Count). | Iniciativas para controlo do ambiente Monitorização do hardware Controlador/Monitor da velocidade da ventoinha Função "Smart Guardian" da ITE | |
| Memória principal | Ranuras DIMM DDR3 x 2 Capacidade máxima de memória: 16 GB Cada módulo DIMM suporta uma memória DDR3 de 512MB/ 1GB/2GB/4GB/8GB | Módulo de memória DDR3 de canal duplo Suporta módulos DDR3 1066 / 1333 /1600 Os módulos DIMM registados e os DIMM ECC não são suportados | |
| SATA 2 | Controlador Serial ATA integrado | Velocidades de transmissão de dados até 3.0 Gb/s. Compatibilidade com a especificação SATA versão 2.0 | |
| LAN | RTL8111F | Auto negociação de 10/100/1000 Mb/s Capacidade semi/full-duplex | |
| Suporte para áudio de alta definição | ALC662 | Suporta a especificação High-Definition Audio Saída de áudio de 5.1 canais | |
| Ranuras | Ranura PCI-E Gen3 x16 (dependendo da CPU) | x1 | |
| | Ranura PCI-E Gen2 x 1 | x2 | |
| Conectores na placa | Conector SATA2 | x4 | Cada conector suporta 1 dispositivo SATA2 |
| | Conector do painel frontal | x1 | Para suporte de várias funções no painel frontal |
| | Conector de áudio frontal | x1 | Suporta a função de áudio no painel frontal |
| | Conector da ventoinha da CPU | x1 | Alimentação da ventoinha da CPU (com a função Smart Fan) |
| | Conector da ventoinha do sistema | x1 | Alimentação da ventoinha do sistema |
| | Conector para limpeza do CMOS | x1 | |

| ESPECIFICAÇÕES | | | |
|------------------------------------|------------------------------------|----|---|
| | Conector USB2.0 | x2 | Cada conector suporta 2 portas USB2.0 no painel frontal |
| | Conector de alimentação (24 pinos) | x1 | |
| | Conector de alimentação (4 pinos) | x1 | |
| Entradas/Saídas no painel traseiro | Teclado PS/2 | x1 | |
| | Rato PS/2 | x1 | |
| | Porta VGA | x1 | |
| | Porta série | x1 | |
| | Porta para impressora | x1 | |
| | Porta LAN | x1 | |
| | Porta USB2.0 | x4 | |
| | Tomada de áudio | x3 | |
| Tamanho da placa | 180 mm (L) X 226 mm (A) | | |
| Sistemas operativos suportados | Windows XP / Vista / 7 | | A Biostar reserva-se o direito de adicionar ou remover suporte para qualquer sistema operativo com ou sem aviso prévio. |

POLISH

| SPEC | | |
|------------------|--|---|
| Procesor | Socket 1155 Procesor Intel Core i7 / i5 / i3 / Pentium / Celeron | Obsługa Execute Disable Bit / Enhanced Intel SpeedStep® / Intel Architecture-64 / Extended Memory 64 Technology / Virtualization Technology / Hyper Threading |
| Chipset | Intel H61 | |
| Pamięć główna | Gniazda DDR3 DIMM x 2 Maks. wielkość pamięci 16GB Każde gniazdo DIMM obsługuje moduły 512MB/1GB/2GB/4GB/8GB DDR3 | Moduł pamięci DDR3 z trybem podwójnego kanału Obsługa DDR3 1066 / 1333 /1600 Brak obsługi Registered DIMM oraz ECC DIMM |
| Super I/O | IT8728 Zapewnia najbardziej powszechne funkcje Super I/O. Interfejs Low Pin Count | Funkcje kontroli warunków pracy, Monitor H/W Kontroler/Monitor prędkości wentylatora Funkcja ITE "Smart Guardian" |
| SATA 2 | Zintegrowany kontroler Serial ATA | Transfer danych do 3.0 Gb/s. Zgodność ze specyfikacją SATA w wersji 2.0 |
| LAN | RTL8111F | 10/100/1000 Mb/s z automatyczną negocjacją szybkości Działanie w trybie połowicznego / pełnego duplexu |
| Obsługa audio HD | ALC662 | Obsługa High-Definition Audio 5.1 kanałowe wyjście audio |
| Gniazda | Gniazdo PCI-E Gen3 x16 x1 (w zależności od procesora) | |
| | Gniazdo PCI-E Gen2 x 1 x2 | |
| Złącza wbudowane | Złącze SATA2 x4 | Każde złącze obsługuje 1 urządzenie SATA2 |
| | Złącze panela przedniego x1 | Obsługa elementów panela przedniego |
| | Przednie złącze audio x1 | Obsługa funkcji audio na panelu przednim |
| | Złącze główkowe wentylatora procesora x1 | Zasilanie wentylatora procesora (z funkcją Smart Fan) |
| | Złącze główkowe wentylatora systemowego x1 | Zasilanie wentylatora systemowego |
| | Złącze główkowe kasowania CMOS x1 | |
| | Złącze USB2.0 x2 | Każde złącze obsługuje 2 porty USB2.0 na panelu przednim |

| SPEC | | | |
|------------------------------------|------------------------------|----|---|
| | Złącze zasilania (24 pinowe) | x1 | |
| | Złącze zasilania (4 pinowe) | x1 | |
| Back Panel I/O | Klawiatura PS/2 | x1 | |
| | Mysz PS/2 | x1 | |
| | Port VGA | x1 | |
| | Port szeregowy | x1 | |
| | Port drukarki | x1 | |
| | Port LAN | x1 | |
| | Port USB2.0 | x4 | |
| | Gniazdo audio | x3 | |
| Wymiary płyty | 180 mm (S) X 226 mm (W) | | |
| Obsługa systemu operacyjnego | Windows XP / Vista / 7 | | Biostar zastrzega sobie prawo dodawania lub odwoływania obsługi dowolnego systemu operacyjnego bez powiadomienia. |

RUSSIAN

| СПЕЦ | | |
|-----------------------------------|--|---|
| CPU (центральный процессор) | Socket 1155 Процессор Intel Core i7 / i5 / i3 / Pentium / Celeron | Поддержка технологий Execute Disable Bit / Enhanced Intel SpeedStep® / Intel Architecture-64 / Extended Memory 64 Technology / технологии виртуализация / Hyper Threading |
| Набор микросхем | Intel H61 | |
| Основная память | Слоты DDR3 DIMM x 2 Максимальная ёмкость памяти 16 ГБ Каждый модуль DIMM поддерживает 512МБ/1ГБ/2ГБ/4ГБ/8ГБ DDR3 | Модуль памяти с двухканальным режимом DDR3 Поддержка DDR3 1066 / 1333 /1600 Не поддерживает зарегистрированные модули DIMM and ECC DIMM |
| Super I/O | IT8728 Обеспечивает наиболее используемые действующие функциональные возможности Super I/O. Интерфейс с низким количеством выводов | Инициативы по охране окружающей среды, Аппаратный монитор Регулятор скорости вентилятора/ монитор Функция ITE "Smart Guardian" (Интеллектуальная защита) |
| SATA 2 | Встроенное последовательное устройство управления ATA | скорость передачи данных до 3.0 гигабит/с. Соответствие спецификации SATA версия 2.0 |
| Локальная сеть | RTL8111F | Автоматическое согласование 10/100/1000 Мб/с Частичная / полная дуплексная способность |
| Звуковая поддержка жесткого диска | ALC662 | Звуковая поддержка High-Definition 5.1канальный звуковой выход |
| Слоты | Слот PCI-E Gen3 x16 x1 (в зависимости от процессора) | |
| | Слот PCI-E Gen2 x 1 x2 | |
| Встроенный разъём | Разъём SATA2 x4 | Каждый разъём поддерживает 1 устройство SATA2 |
| | Разъём на лицевой панели x1 | Поддержка устройств на лицевой панели |
| | Входной звуковой разъём x1 | Поддержка звуковых функций на лицевой панели |
| | Контактирующее приспособление вентилятора центрального процессора x1 | Источник питания для вентилятора центрального процессора (с функцией интеллектуального вентилятора) |

| СПЕЦ | | | |
|------------------------------------|---|----|--|
| | Контактирующее приспособление вентилятора системы | x1 | Источник питания для вентилятора системы |
| | Открытое контактирующее приспособление CMOS | x1 | |
| | USB2.0-разъём | x2 | Каждый разъём поддерживает 2 USB2.0-порта на лицевой панели |
| | Разъём питания (24 вывод) | x1 | |
| | Разъём питания (4 вывод) | x1 | |
| Задняя панель средств ввода-вывода | Клавиатура PS/2 | x1 | |
| | Мышь PS/2 | x1 | |
| | Порт VGA | x1 | |
| | Последовательный порт | x1 | |
| | Порт подключения принтера | x1 | |
| | Порт LAN | x1 | |
| | USB2.0-порт | x4 | |
| | Гнездо для подключения наушников | x3 | |
| Размер панели | 180 мм (Ш) X 226 мм (В) | | |
| Поддержка OS | Windows XP / Vista / 7 | | Biostar сохраняет за собой право добавлять или удалять средства обеспечения для OS с или без предварительного уведомления. |

ARABIC

| المواصفات | | |
|---|---|-----------------------------------|
| Execute Disable Bit / Enhanced Intel SpeedStep® / Intel Architecture-64 / Extended Memory 64 Technology / Virtualization Technology / Hyper Threading | Socket 1155 Intel Core i7 / i5 / i3 / Pentium / Celeron يتردد يصل إلى | وحدة المعالجة المركزية |
| | Intel H61 | مجموعة الشرائح |
| عدد 2 قناة DDR3 DIMM سعة ذاكرة قصوى 16 جيجا بايت ميجا بايت و1 / 512 / سعة DDR3 تدعم ذاكرة من نوع DIMM تدعم كل قناة و2 / 4 و8 جيجا بايت | القناة مزدوجة DDR3 وحدة ذاكرة 1066 / 1600 / 1333 سعات DDR3 نوع من كرهة الذا تدعم لا التي وتلك DIMM الذاكرة رقائيق تدعم لا باييت ميجا ECC مع تتوافق | الذاكرة الرئيسية |
| وسائل التحكم في البيئة: مراقب لمعرفة حالة الأجهزة مراقب في سرعة المروحة ITE من "Smart Guardian" وظيفة | IT8728 الأكثر استخداماً. Super I/O يوفر وظيفة Low Pin Count Interface تدعم تقنية | Super I/O |
| جيجابت/ثانية. 3.0 نقل البيانات بسرعة تصل إلى 2.0 الإصدار SATA مطلقة لمواصفات | متكامل Serial ATA تحكم SATA 2 | SATA 2 |
| إمكانية النقل ثنائية / باييت ميجا 10/100/1000 تلقائي تفاوض المزدوج الكامل/القصي | RTL8111F | شبكة داخلية |
| تدعم تقنية الصوت عالي التعريف من 5.1 قنوات لخرج الصوت | ALC662 | دعم الصوت عالي التعريف |
| | قناة PCI-E Gen3 x16 عدد 1 (المركزية المعالجة وحدة على اعتمادا) قناة PCI-E Gen2 x1 عدد 2 | القنوات |
| يدعم كل منفذ واحد من أجهزة SATA2 | منفذ SATA2 عدد 4 | منفذ SATA2 |
| يدعم تجهيزات اللوحة الأممية | منفذ اللوحة الأممية عدد 1 | منفذ اللوحة الأممية |
| يدعم وظيفة الصوت باللوحة الأممية | منفذ الصوت الأممي عدد 1 | منفذ الصوت الأممي |
| توصيل الطاقة لمروحة وحدة المعالجة مع وظيفة Smart Fan | وصلة مروحة وحدة المعالجة المركزية عدد 1 | وصلة مروحة وحدة المعالجة المركزية |
| توصيل الطاقة لمروحة النظام | وصلة مروحة النظام عدد 1 | وصلة مروحة النظام |
| | وصلة مسح CMOS عدد 1 | وصلة مسح CMOS |
| يدعم كل منفذ قحتي USB2.0 باللوحة الأممية | منفذ USB2.0 عدد 2 | منفذ USB2.0 |
| | منفذ توصيل الطاقة (24دبوس) عدد 1 | منفذ توصيل الطاقة (24دبوس) |
| | منفذ توصيل الطاقة (4دبوس) عدد 1 | منفذ توصيل الطاقة (4دبوس) |
| | وحدة مفاتيح PS/2 عدد 1 | وحدة مفاتيح PS/2 |
| | ملوس PS/2 عدد 1 | ملوس PS/2 |
| | منفذ تنسلسلي عدد 1 | منفذ تنسلسلي |
| | منفذ طابعة عدد 1 | منفذ طابعة |
| | منفذ VGA عدد 1 | منفذ VGA |

H61MGE

| المواصفات | | |
|-------------------|---|--|
| | عدد 1 | منفذ شبكة اتصال محلية |
| | عدد 4 | منافذ USB |
| | عدد 3 | مقيس صوت |
| | حجم اللوحة 180 مم (عرض) X 226 مم (ارتفاع) | |
| دعم أنظمة التشغيل | Windows XP / Vista / 7 | بحقيا في إضافة أو إزالة الدعم لأي نظام تشغيل بالخطأ أو Biostar احتفظ بنون الخطأ. |

JAPANESE

| 仕様 | | |
|----------------|--|---|
| CPU | Socket 1155 Intel Core i7 / i5 / i3 / Pentium / Celeron プロセッサ | Execute Disable Bit / Enhanced Intel SpeedStep® / Intel Architecture-64 / Extended Memory 64 Technology / Virtualization Technology / Hyper Threadingをサポートします |
| チップセット | Intel H61 | |
| メインメモリ | DDR3 DIMMスロット x 2 最大メモリ容量16GB 各DIMMは 512MB/1GB/2GB/4GB/8GB DDR3をサポート | デュアル チャンネルモードDDR3メモリモジュール DDR3 1066 / 1333 / 1600 をサポート 登録済みDIMMとECC DIMMはサポートされません |
| Super I/O | IT8728 もっとも一般に使用されるレガシーSuper I/O機能を採用しています。 低ピンカウントインターフェイス | 環境コントロールインシアチップ、 H/Wモニター ファン速度コントローラ/ モニター ITEの「スマートガーディアン」機能 |
| SATA 2 | 統合シリアルATAコントローラ | 最高3.0 Gb/秒のデータ転送速度 SATAバージョン2.0仕様に準拠 |
| LAN | RTL8111F | 10/100/1000 Mb/秒のオートネゴシエーション 半/全二重機能 |
| HDオーディオのサポート | ALC662 ハイデフィニションオーディオのサポート 5.1 チャンネルオーディオアウト | |
| スロット | PCI-E Gen3 x16スロット x1 (CPUに依存) | |
| | PCI Express Gen2 x 1スロット x2 | |
| オンボードコネクタ | SATA2コネクタ x4 | 各コネクタは1つのSATA2デバイスをサポートします |
| | フロントパネルコネクタ x1 | フロントパネル機能をサポートします |
| | フロントオーディオコネクタ x1 | フロントパネルオーディオ機能をサポートします |
| | CPUファンヘッダ x1 | CPUファン電源装置(スマートファン機能を搭載) |
| | システムファンヘッダ x1 | システムファン電源装置 |
| | CMOSクリアヘッダ x1 | |
| | USB2.0コネクタ x2 | 各コネクタは2つのフロントパネルUSB2.0ポートをサポートします |
| | 電源コネクタ(24ピン) x1 | |
| 電源コネクタ(4ピン) x1 | | |

| 仕様 | | | |
|--------------|--------------------------|---|--|
| 背面パネル I/O | PS/2キーボード | x1 | |
| | PS/2マウス | x1 | |
| | VGAポート | x1 | |
| | シリアルポート | x1 | |
| | プリンタポート | x1 | |
| | LANポート | x1 | |
| | USB2.0ポート | x4 | |
| | オーディオジャック | x3 | |
| ボードサイズ | 180 mm (幅) X 226 mm (高さ) | | |
| OSサポート | Windows XP / Vista / 7 | Biostarは事前のサポートなしにOSサポートを追加または削除する権利を留保します。 | |

2012/03/16