

P4ARA-M BIOS Setup

| | |
|----------------------------------|----------|
| BIOS Setup | 1 |
| 1 Main Menu..... | 3 |
| 2 Standard CMOS Features | 6 |
| 3 Advanced BIOS Features..... | 9 |
| 4 Advanced Chipset Features..... | 12 |
| 5 Integrated Peripherals | 15 |
| 6 Power Management Setup | 20 |
| 7 PnP/PCI Configurations | 23 |
| 8 PC Health Status | 26 |
| 9 Frequency Control | 28 |

P4ARA-M BIOS Setup

BIOS Setup

Introduction

This manual discussed Award™ Setup program built into the ROM BIOS. The Setup program allows users to modify the basic system configuration. This special information is then stored in battery-backed RAM so that it retains the Setup information when the power is turned off.

The Award BIOS™ installed in your computer system's ROM (Read Only Memory) is a custom version of an industry standard BIOS. This means that it supports Intel Pentium® 4 processor input/output system. The BIOS provides critical low-level support for standard devices such as disk drives and serial and parallel ports.

Adding important has customized the Award BIOS™, but nonstandard, features such as virus and password protection as well as special support for detailed fine-tuning of the chipset controlling the entire system.

The rest of this manual is intended to guide you through the process of configuring your system using Setup.

Plug and Play Support

These AWARD BIOS supports the Plug and Play Version 1.0A specification. ESCD (Extended System Configuration Data) write is supported.

EPA Green PC Support

This AWARD BIOS supports Version 1.03 of the EPA Green PC specification.

APM Support

These AWARD BIOS supports Version 1.1&1.2 of the Advanced Power Management (APM) specification. Power management features are implemented via the System Management Interrupt (SMI). Sleep and Suspend power management modes are supported. This AWARD BIOS can manage power to the hard disk drives and video monitors .

ACPI Support

Award ACPI BIOS support Version 1.0 of Advanced Configuration and Power interface specification (ACPI). It provides ASL code for power management and device configuration capabilities as defined in the ACPI specification, developed by Microsoft, Intel and Toshiba.

P4ARA-M BIOS Setup

PCI Bus Support

This AWARD BIOS also supports Version 2.1 of the Intel PCI (Peripheral Component Interconnect) local bus specification.

DRAM Support

DDR DRAM (Double Data Rate Synchronous DRAM) are supported.

Supported CPUs

This AWARD BIOS supports the Intel Pentium® 4 CPU.

Using Setup

In general, you use the arrow keys to highlight items, press <Enter> to select, use the <PgUp> and <PgDn> keys to change entries, press <F1> for help and press <Esc> to quit. The following table provides more detail about how to navigate in the Setup program by using the keyboard.

| Keystroke | Function |
|-------------|---|
| Up arrow | Move to previous item |
| Down arrow | Move to next item |
| Left arrow | Move to the item on the left (menu bar) |
| Right arrow | Move to the item on the right (menu bar) |
| Move Enter | Move to the item you desired |
| PgUp key | Increase the numeric value or make changes |
| PgDn key | Decrease the numeric value or make changes |
| + Key | Increase the numeric value or make changes |
| - Key | Decrease the numeric value or make changes |
| Esc key | Main Menu – Quit and not save changes into CMOS Status Page Setup Menu and Option Page Setup Menu – Exit Current page and return to Main Menu |
| F1 key | General help on Setup navigation keys |
| F5 key | Load previous values from CMOS |
| F7 key | Load the optimized defaults |
| F10 key | Save all the CMOS changes and exit |

P4ARA-M BIOS Setup

1 Main Menu

Once you enter Award BIOS™ CMOS Setup Utility, the Main Menu will appear on the screen. The Main Menu allows you to select from several setup functions. Use the arrow keys to select among the items and press <Enter> to accept and enter the sub-menu.

WARNING

The information about BIOS defaults on manual (Figure 1,2,3,4,5,6,7,8,9) is just for reference, please refer to the BIOS installed on board, for update information.

■ Figure 1. Main Menu



Standard CMOS Features

This submenu contains industry standard configurable options.

Advanced BIOS Features

This submenu allows you to configure enhanced features of the BIOS.

Advanced Chipset Features

This submenu allows you to configure special chipset features.

P4ARA-M BIOS Setup

Integrated Peripherals

This submenu allows you to configure certain IDE hard drive options and Programmed Input/ Output features.

Power Management Setup

This submenu allows you to configure the power management features.

PnP/PCI Configurations

This submenu allows you to configure certain “Plug and Play” and PCI options.

PC Health Status


This submenu allows you to monitor the hardware of your system.

Frequency Control

This submenu allows you to change CPU Vcore Voltage and CPU/PCI clock. **(However, this function is strongly recommended not to use. Not properly change the voltage and clock may cause CPU or M/B damage!)**

Load Optimized Defaults

This selection allows you to reload the BIOS when the system is having problems particularly with the boot sequence. These configurations are factory settings optimized for this system. A confirmation message will be displayed before defaults are set.



```
Load Optimized Defaults (Y/N)? N
```

Set Supervisor Password

Setting the supervisor password will prohibit everyone except the supervisor from making changes using the CMOS Setup Utility. You will be prompted with to enter a password.



```
Enter Password:
```

Set User Password

If the Supervisor Password is not set, then the User Password will function in the same way as the Supervisor Password. If the Supervisor Password is set and the User Password is set, the “User” will only be able to view configurations but will not be able to change them.



```
Enter Password:
```

Save & Exit Setup

P4ARA-M BIOS Setup

Save all configuration changes to CMOS(memory) and exit setup. Confirmation message will be displayed before proceeding

```
SAVE to CMOS and EXIT (Y/N)? Y
```

Exit Without Saving

Abandon all changes made during the current session and exit setup. Confirmation message will be displayed before proceeding

```
Quit Without Saving (Y/N)? N
```

Upgrade BIOS

This submenu allows you to upgrade bios.

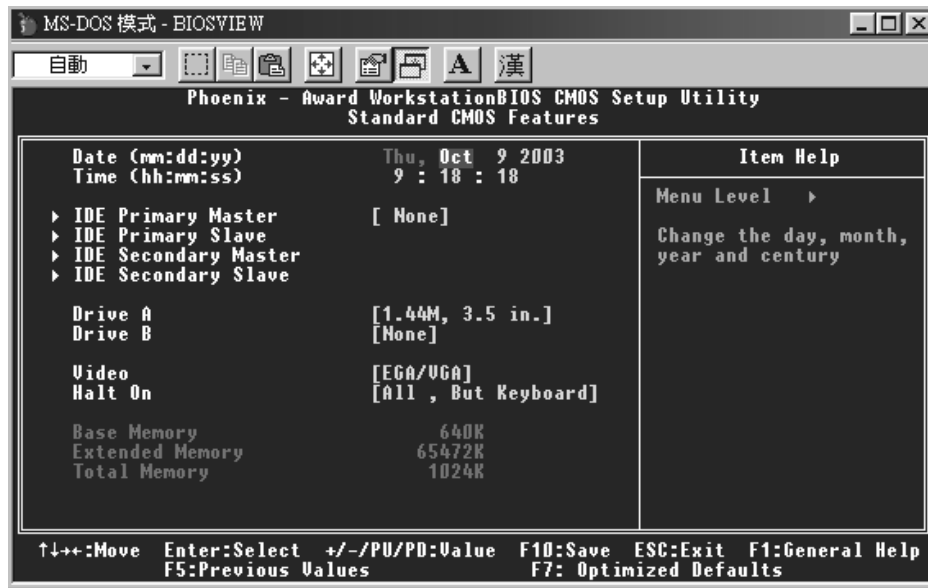
```
BIOS UPDATE UTILITY (Y/N)? N
```

P4ARA-M BIOS Setup

2 Standard CMOS Features

The items in Standard CMOS Setup Menu are divided into 10 categories. Each category includes no, one or more than one setup items. Use the arrow keys to highlight the item and then use the <PgUp> or <PgDn> keys to select the value you want in each item.

■ **Figure 2. Standard CMOS Setup**



P4ARA-M BIOS Setup

Main Menu Selections

This table shows the selections that you can make on the Main Menu.

| Item | Options | Description |
|----------------------|--|---|
| Date | mm : dd : yy | Set the system date. Note that the 'Day' automatically changes when you set the date. |
| Time | hh : mm : ss | Set the system internal clock. |
| IDE Primary Master | Options are in its sub menu. | Press <Enter> to enter the sub menu of detailed options |
| IDE Primary Slave | Options are in its sub menu. | Press <Enter> to enter the sub menu of detailed options. |
| IDE Secondary Master | Options are in its sub menu. | Press <Enter> to enter the sub menu of detailed options. |
| IDE Secondary Slave | Options are in its sub menu. | Press <Enter> to enter the sub menu of detailed options. |
| Drive A Drive B | 360K, 5.25 in 1.2M, 5.25 in 720K, 3.5 in 1.44M, 3.5 in 2.88M, 3.5 in None | Select the type of floppy disk drive installed in your system. |
| Video | EGA/VGA CGA 40 CGA 80 MONO | Select the default video device. |

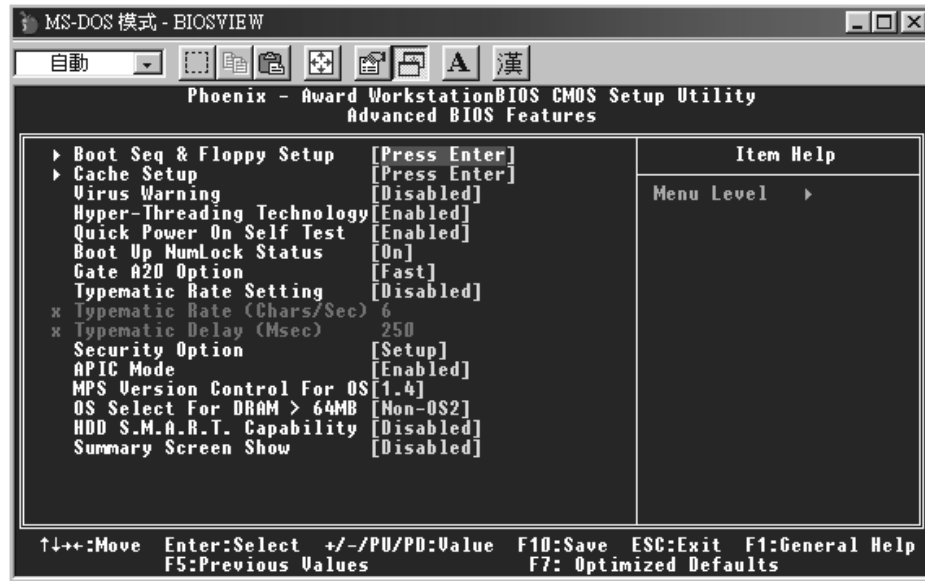
P4ARA-M BIOS Setup

| Item | Options | Description |
|-----------------|---|--|
| Halt On | All Errors No Errors All, but Keyboard All, but Diskette All, but Disk/ Key | Select the situation in which you want the BIOS to stop the POST process and notify you. |
| Base Memory | N/A | Displays the amount of conventional memory detected during boot up. |
| Extended Memory | N/A | Displays the amount of extended memory detected during boot up. |
| Total Memory | N/A | Displays the total memory available in the system. |

P4ARA-M BIOS Setup

3 Advanced BIOS Features

■ Figure 3. Advanced BIOS Setup



Boot Seq & Floppy Setup

First /Second/Third/ Boot Other Device

These BIOS attempts to load the operating system from the devices in the sequence selected in these items.

The Choices: Floppy, LS120, HDD-0, SCSI, CDROM, HDD-1, HDD-2, HDD-3, ZIP100, USB-FDD, USB-CDROM, USB-HDD, LAN, Enabled, Disabled.

Swap Floppy Drive

For systems with two floppy drives, this option allows you to swap logical drive assignments.

The Choices: Enabled, Disabled (default).

Boot Up Floppy Seek

Enabling this option will test the floppy drives to determine if they have 40 or 80 tracks. Disabling this option reduces the time it takes to boot-up.

The Choices: Disabled (default), enabled.

Cache Setup

P4ARA-M BIOS Setup

CPU L1 & L2 Cache

Depending on the CPU/chipset in use, you may be able to increase memory access time with this option.

Enabled (default) Enable cache.
Disabled Disable cache.

Virus Warning

This option allows you to choose the VIRUS Warning feature that is used to protect the IDE Hard Disk boot sector. If this function is enabled and an attempt is made to write to the boot sector, BIOS will display a warning message on the screen and sound an alarm beep.

Disabled (default) Virus protection is disabled.
Enabled Virus protection is activated.

Hyper-Threading Technology

This option allows you to enable or disabled CPU Hyper-Threading.

The Choices: **Enabled** (Default), Disabled.

Quick Power On Self Test

Enabling this option will cause an abridged version of the Power On Self-Test (POST) to execute after you power up the computer.

Disabled Normal POST.
Enabled (default) Enable quick POST.

Boot Up NumLock Status

Selects the NumLock. State after power on.

On (default) Numpad is number keys.
Off Numpad is arrow keys.

Gate A20 Option

Select if chipset or keyboard controller should control Gate A20.

Normal A pin in the keyboard controller controls Gate A20.
Fast (default) Lets chipset control Gate A20.

Typematic Rate Setting

When a key is held down, the keystroke will repeat at a rate determined by the keyboard controller. When enabled, the typematic rate and typematic delay can be configured.

The Choices: **Disabled** (default), Enabled.

Typematic Rate (Chars/Sec)

Sets the rate at which a keystroke is repeated when you hold the key down.

The Choices: **6** (default), 8, 10, 12, 15, 20, 24, 30.

Typematic Delay (Msec)

P4ARA-M BIOS Setup

Sets the delay time after the key is held down before it begins to repeat the keystroke.
The Choices: 250 (default), 500,750,1000.

Security Option

This option will enable only individuals with passwords to bring the system online and/or to use the CMOS Setup Utility.

System: A password is required for the system to boot and is also required to access the Setup Utility.

Setup (default): A password is required to access the Setup Utility only.

This will only apply if passwords are set from the Setup main menu.

APIC Mode

Selecting Enabled enables APIC device mode reporting from the BIOS to the operating system.

The Choices: Enabled (default), Disabled.

MPS Version Control For OS

The BIOS supports version 1.1 and 1.4 of the Intel multiprocessor specification.

Select version supported by the operation system running on this computer.

The Choices: 1.4 (default), 1.1.

OS Select For DRAM > 64MB

A choice other than Non-OS2 is only used for OS2 systems with memory exceeding 64MB.

The Choices: Non-OS2 (default), OS2.

HDD S.M.A.R.T Capability

This item allows you to enable/disable the S.M.A.R.T. function of the hard disk.

The Choices: Disabled (default), Enabled.

Summary Screen Show

This item allows you to enable/disable the summary screen. Summary screen means system configuration and PCI device listing.

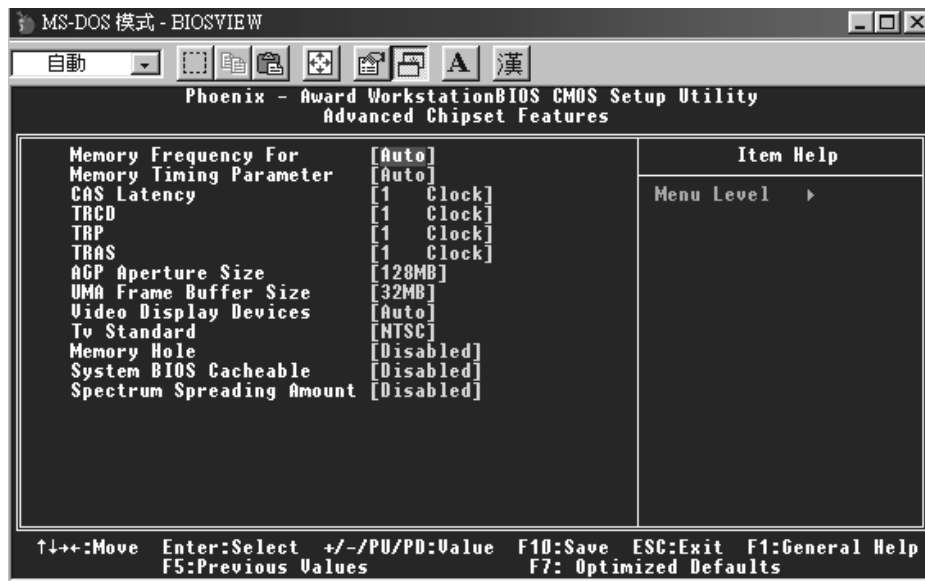
The Choices: Enabled, Disabled (default).

P4ARA-M BIOS Setup

4 Advanced Chipset Features

This submenu allows you to configure the specific features of the chipset installed on your system. This chipset manage bus speeds and access to system memory resources, such as DRAM. It also coordinates communications with the PCI bus. The default settings that came with your system have been optimized and therefore should not be changed unless you are suspicious that the settings have been changed incorrectly.

■ Figure 4. Advanced Chipset Setup



Memory Frequency For

This item allows you to select the Memory Frequency.

The Choices: Auto (default), DDR200, DDR266, DDR333, DDR400.

Memory Timing Parameter

This item allows you to select the Memory Timing Parameter.

Auto (default)

P4ARA-M BIOS Setup

CAS Latency

When synchronous DRAM is installed, the number of clock cycles of CAS latency depends on the DRAM timing.

The Choices: 2.5 (default), 1 clock, 2, 3, 4, 1.5, 2.5, 3.5

TRCD

The Choices: 3 (default), 1 clock, 2, 3, 4

TRP

The Choices: 3 (default), 1 clock, 2, 3, 4

TRAS

The Choices: 8 (default), 1 clock, 2, 3, 4, 5, 6, 7, 8

AGP Aperture Size

Select the size of the Accelerated Graphics Port (AGP) aperture. The aperture is a portion of the PCI memory address range dedicated for graphics memory address space. Host cycles that hit the aperture range are forwarded to the AGP without any translation.

The Choices: 512M, 128M, **256M** (default), 64M, 32M, 16M, 8M, 4M, 1G.

UMA Frame Buffer Size

The Choices: 32MB (default), 8MB, 16MB, 64MB, 128MB, None

Video Display Device

This item supports the display of CRT, CLD, DFP, and TV.

The Choices: Auto (default), CRT, CLD, DFP, TV, CRT Force, Other Auto, TV Force, Other Auto, CRT Force, TV Force.

TV Standard

By supporting TV, this item offers the end users to select the TV mode.

The Choices: NTSC (default), PAL, PAL-M, PAL-60, NTSC-JAP, PAL-W, PAL-N, SCART_RGB.

Memory Hole

You can reserve this area of system memory for ISA adapter ROM. When this area is reserved it cannot be cached. The user information of peripherals that need to use this area of system memory usually discussed their memory requirements.

The Choices: Disabled (default), 15M-16M.

System BIOS Cacheable

P4ARA-M BIOS Setup

Selecting the “Enabled” option allows caching of the system BIOS ROM at F0000h-FFFFFh which can improve system performance. However, any programs writing to this area of memory will cause conflicts and result in system errors.

The Choices: Enabled, **Disabled** (default).

Spectrum Spreading Amount

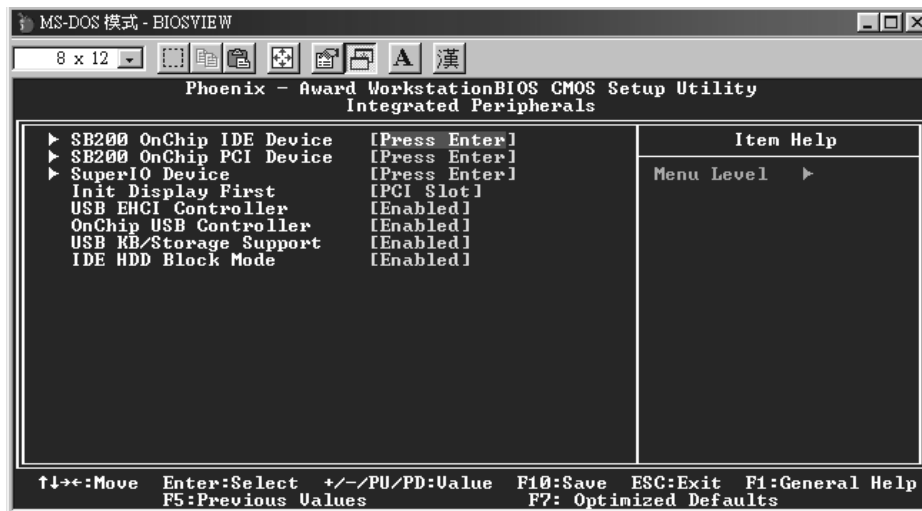
This item allows you to enable/disable the Spread Spectrum function.

The Choices: **Disabled** (default), 0.25%, 0.50%, 0.75%, 1.00%, 1.25%, 1.50%, 1.75%.

P4ARA-M BIOS Setup

5 Integrated Peripherals

■ Figure 5. Integrated Peripherals



SB200 OnChip IDE Device

If you highlight the literal “Press Enter” next to the “SB200 OnChip IDE Device” label and then press the enter key, it will take you a submenu with the following options:

IDE DMA Transfer Access

The “onboard” IDE drive interface supports IDE DMA read/write function.

The Choices: Enabled (default), Disabled.

OnChip IDE Channel 0/1

The motherboard chipset contains a PCI IDE interface with support for two IDE channels. Select “Enabled” to activate the first and/or second IDE interface. Select “Disabled” to deactivate an interface if you are going to install a primary and/or secondary add-in IDE interface.

The Choices: Enabled (default), Disabled.

IDE Prefetch Mode

The “onboard” IDE drive interfaces supports IDE prefetching for faster drive access. If the interface does not support prefetching. If you install a primary and/or secondary add-in IDE interface, set this option to “Disabled”.

The Choices: Disabled (default), Enabled.

Primary / Secondary /Master / Slave PIO

P4ARA-M BIOS Setup

The IDE PIO (Programmed Input / Output) fields let you set a PIO mode (0-4) for each of the IDE devices that the onboard IDE interface supports. Modes 0 to 4 will increase performance progressively. In Auto mode, the system automatically determines the best mode for each device.

The Choices: Auto (default), Mode0, Mode1, Mode2, Mode3, Mode4.

Primary / Secondary / Master / Slave UDMA

Ultra DMA/100 functionality can be implemented if it is supported by the IDE hard drives in your system. As well, your operating environment requires a DMA driver (Windows 95 OSR2 or a third party IDE bus master driver). If your hard drive and your system software both support Ultra DMA/100, select Auto to enable BIOS support.

The Choices: Auto (default), Disabled.

SB200 OnChip PCI Device

If you highlight the literal "Press Enter" next to the "SB200 OnChip PCI Device" label and then press the enter key, it will take you a submenu with the following options:

Onboard AC97 Audio

This option allows you to control the onboard AC97 audio.

The Choices: Auto (default), Disabled.

Onboard MC97 Modem

This option allows you to control the onboard MC97 modem.

The Choices: Auto (default), Disabled.

Onboard SATA Controller

This option allows you to control the onboard SATA.

The Choices: Enabled (default), Disabled.

Onboard LAN Controller

This option allows you to control the onboard LAN.

The Choices: Enabled (default), Disabled.

Onboard LAN Boot ROM

Decide whether to invoke the boot ROM of the onboard LAN chip.

The Choices: Disabled (default), Enabled.

Super IO Device

Press Enter to configure the Super I/O Device.

POWER ON Function

This option allows you to choose the different function to power on the computer.

The Choices: Hot Key (default), Password, Mouse Move, Mouse Click, Any Key, Button Only, Keyboard 98.

P4ARA-M BIOS Setup

KB Power ON Password

Press Enter to configure the K8 Power ON Password.

The Choices: PCI Slot (default), AGP.

Hot Key Power ON

This option allows you to choose a hot key to power on.

The Choices: Ctrl-F1 (default), Ctrl-F2, Ctrl-F3, Ctrl-F4, Ctrl-F5, Ctrl-F6, Ctrl-F7, Ctrl-F8.

Onboard FDC Controller

Select Enabled if your system has a floppy disk controller (FDC) installed on the system board and you wish to use it. If install and FDC or the system has no floppy drive, select Disabled in this field.

The Choices: Enabled (default), Disabled.

Onboard Serial Port 1

Select an address and corresponding interrupt for the first and second serial ports.

The Choices: 3F8/IRQ4 (default), Disabled, Auto, 2F8/IRQ3, 3E8/IRQ4, 2E8/IRQ3.

Onboard Serial Port 2

Select an address and corresponding interrupt for the first and second serial ports

The Choices: 2F8/IRQ3 (default), Disabled, Auto, 3F8/IRQ4, 3E8/IRQ4, 2E8/IRQ3.

UART Mode Select

This item allows you to determine which Infrared (IR) function of onboard I/O chip.

The Choices: Normal(default), ASKIR, IrDA, SCR .

UR2 Duplex Mode

Select the value required by the IR device connected to the IR port. Full-duplex mode permits simultaneous two-direction transmission. Half-duplex mode permits transmission in one direction only at a time.

The Choices: Half (default), Full.

Onboard Parallel Port

This item allows you to determine access onboard parallel port controller with which I/O Address.

The Choices: 378/IRQ7 (default), 278/IRQ5, 3BC/IRQ7, Disabled.

Parallel Port Mode

The default value is SPP.

The Choices:

SPP (Default) Using Parallel Port as Standard Printer Port.

P4ARA-M BIOS Setup

| | |
|---------|--|
| EPP | Using Parallel Port as Enhanced Parallel Port. |
| ECP | Using Parallel Port as Extended Capabilities Port. |
| ECP+EPP | Using Parallel Port as ECP & EPP mode. |

ECP Mode Use DMA

Select a DMA Channel for the port.

The Choices: 3 (default), 1.

PWRON After PWR-Fail

This field determines the action the system will automatically take when power is restored to a system that had lost power previously without any subsequent manual intervention. There are 3 sources that provide current to the CMOS area that retains these Power-On instructions; the motherboard battery (3V), the Power Supply (5VSB), and the Power Supply (3.3V). While AC is not supplying power, the motherboard uses the motherboard battery (3V). If AC power is supplied and the Power Supply is not turned on, 5VSB from the Power Supply is used. When the Power Supply is eventually turned on 3.3V from the Power Supply will be used.

There are 3 options: "Former-Sts", "On", "Off".

"Off" (default) Means always set CMOS to the "Off" status when AC power is lost.

"On" Means always set CMOS to the "On" status when AC power is lost

"Former-Sts" Means to maintain the last status of the CMOS when AC power is lost.

For example: If set to "Former-Sts" and AC power is lost when system is live, then after AC power is restored, the system will automatically power on. If AC power is lost when system is not live, system will remain powered off.

Game Port Address

Game Port I/O Address.

The Choices: 201 (default), 209, Disabled.

Midi Port Address

Midi Port Base I/O Address.

The Choices: 330 (default), 300, Disabled.

Midi Port IRQ

This determines the IRQ in which the Midi Port can use.

The Choices: 10 (default), 5.

Init Display First

With systems that have multiple video cards, this option determines whether the primary display uses a PCI Slot or an AGP Slot.

The Choices: PCI Slot (default), AGP.

P4ARA-M BIOS Setup

USB EHCI Controller

This item allows you to enable or disabled the USB EHCI Controller integrated in ICH4.

The Choices: Disabled (default), Enabled.

OnChip USB Controller

Select Enabled if your system contains a Universal Serial Bus (USB) controller and you have USB peripherals.

The Choices: Enabled (default), Disabled.

USB Keyboard Support

The default value is Disabled.

Enabled

Enable USB Keyboard Support.

Disabled (default)

Disable USB Keyboard Support.

IDE HDD Block Mode

Block mode is also called block transfer, multiple commands, or multiple sector read/ write. If your IDE hard drive supports block mode (most new drives do), select Enabled for automatic detection of the optimal number of block mode (most new drives do), select Enabled for automatic detection of the optimal number of block read/ write per sector where the drive can support.

The Choices: Enabled (default), Disabled.

P4ARA-M BIOS Setup

6 Power Management Setup

The Power Management Setup Menu allows you to configure your system to utilize energy conservation and power up/power down features.

■ **Figure 6. Power Management Setup**



ACPI Function

This item displays the status of the Advanced Configuration and Power Management (ACPI).

The Choices: Enabled (default), Disabled.

ACPI Suspend Type

The item allows you to select the suspend type under the ACPI operating system.

The Choices: S1 (POS) (default) Power on Suspend
S3 (STR) Suspend to RAM
S1 & S3 POS+STR

Power Management Option

This category allows you to select the type (or degree) of power saving and is directly related to the following modes:

1.HDD Power Down.

P4ARA-M BIOS Setup

There are four options of Power Management, three of which have fixed mode settings
Min. Saving

Minimum power management.
HDD Power Down = 15 min

Max Saving

Maximum power management only available for sl CPU's.
HDD Power Down = 1 min.

User Defined (default)

Allows you to set each mode individually.
When not disabled, each of the ranges are from 1 min. to 1 hr. except for
HDD Power Down which ranges from 1 min. to 15 min. and disable.

HDD Power Down

When enabled and after the set time of system inactivity , the hard disk drive will be
powered down while all other devices remain active.

The Choices: Disabled (default), 1Min, 2Min, 3Min, 4Min, 5Min, 6Min, 7Min, 8Min,
9Min, 10Min, 11Min, 12Min, 13Min, 14Min, 15Min.

Video Off Option

This field determines when to activate the video off feature for monitor power
management.

The Choices: Suspend→**Off** (default), Always on.

Video Off Method

This option determines the manner in which the monitor is goes blank.

V/H SYNC+Blank (default)

This selection will cause the system to turn off the vertical and horizontal
synchronization ports and write blanks to the video buffer.

Blank Screen

This option only writes blanks to the video buffer.

DPMS

Initial display power management signaling

MODEM Use IRQ

This determines the IRQ, which can be applied in MODEM use.

The Choices: 3 (default) / 4 / 5 / 7 / 9 / 10 / 11 / NA

P4ARA-M BIOS Setup

Soft-Off by PWR-BTTN

Pressing the power button for more than 4 seconds forces the system to enter the Soft-Off state when the system has “hung.”

The Choices: Delay 4 Sec, **Instant-Off** (default).

RTC Alarm Resume

When “Enabled”, you can set the date and time at which the RTC (real-time clock) alarm awakens the system from Suspend mode.

The Choices: Enabled, **Disabled** (default).

Date (of Month)

You can choose which month the system will boot up. This field is only configurable when “RTC Resume” is set to “Enabled”.

Resume Time (hh:mm:ss)

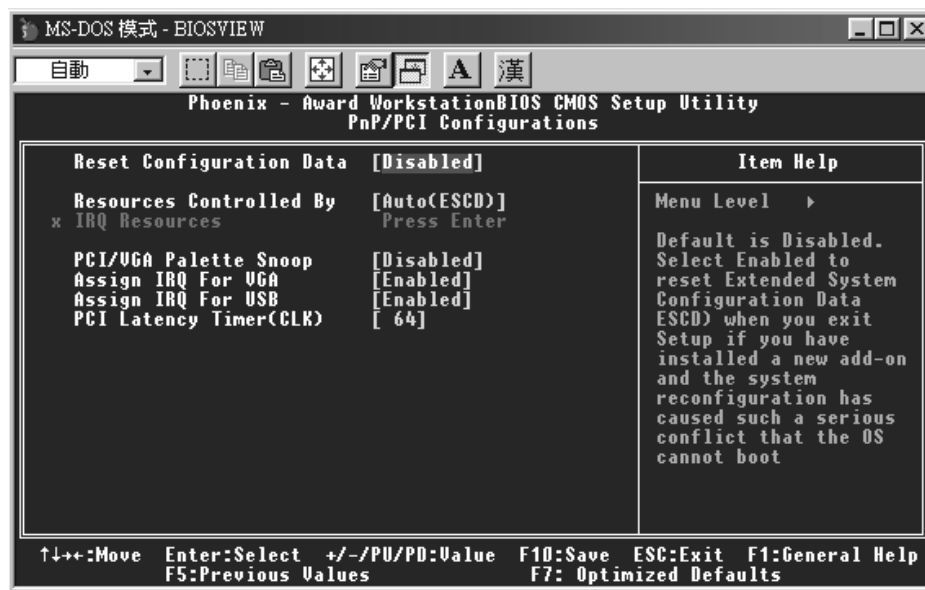
You can choose the hour, minute and second the system will boot up. This field is only configurable when “RTC Resume” is set to “Enabled”.

P4ARA-M BIOS Setup

7 PnP/PCI Configurations

This section describes configuring the PCI bus system. PCI, or Personal Computer Interconnect, is a system which allows I/O devices to operate at speeds nearing the speed of the CPU itself uses when communicating with its own special components. This section covers some very technical items and it is strongly recommended that only experienced users should make any changes to the default settings.

■ Figure 7. PnP/PCI Configurations



Reset Configuration Data

The system BIOS supports the PnP feature which requires the system to record which resources are assigned and protects resources from conflict. Every peripheral device has a node, which is called ESCD. This node records which resources are assigned to it. The system needs to record and update ESCD to the memory locations. These locations (4K) are reserved in the system BIOS. If the Disabled (default) option is chosen, the system's ESCD will update only when the new configuration varies from the last one. If the Enabled option is chosen, the system is forced to update ESCDs and then is automatically set to the "Disabled" mode.

The above settings will be shown on the screen only if "Manual" is chosen for the resources controlled by function.

Legacy is the term, which signifies that a resource is assigned to the ISA Bus and provides

P4ARA-M BIOS Setup

non-PnP ISA add-on cards. PCI / ISA PnP signifies that a resource is assigned to the PCI Bus or provides for ISA PnP add-on cards and peripherals.

The Choices: Disabled (default), Enabled.

Resources Controlled By

By Choosing “**Auto(ESCD)**” (default), the system BIOS will detect the system resources and automatically assign the relative IRQ and DMA channel for each peripheral. By Choosing “Manual”, the user will need to assign IRQ & DMA for add-on cards. Be sure that there are no IRQ/DMA and I/O port conflicts.

IRQ Resources

This submenu will allow you to assign each system interrupt a type, depending on the type of device using the interrupt. When you press the “Press Enter” tag, you will be directed to a submenu that will allow you to configure the system interrupts. This is only configurable when “Resources Controlled By” is set to “Manual”.

| | | |
|--------|-------------|------------|
| IRQ-3 | assigned to | PCI Device |
| IRQ-4 | assigned to | PCI Device |
| IRQ-5 | assigned to | PCI Device |
| IRQ-7 | assigned to | PCI Device |
| IRQ-9 | assigned to | PCI Device |
| IRQ-10 | assigned to | PCI Device |
| IRQ-11 | assigned to | PCI Device |
| IRQ-12 | assigned to | PCI Device |
| IRQ-14 | assigned to | PCI Device |
| IRQ-15 | assigned to | PCI Device |

PCI / VGA Palette Snoop

Choose Disabled or Enabled. Some graphic controllers which are not VGA compatible take the output from a VGA controller and map it to their display as a way to provide boot information and VGA compatibility.

However, the color information coming from the VGA controller is drawn from the palette table inside the VGA controller to generate the proper colors, and the graphic controller needs to know what is in the palette of the VGA controller. To do this, the non-VGA graphic controller watches for the Write access to the VGA palette and registers the snoop data. In PCI based systems, where the VGA controller is on the PCI bus and a non-VGA graphic controller is on an ISA bus, the Write Access to the palette will not show up on the ISA bus if the PCI VGA controller responds to the Write.

In this case, the PCI VGA controller should not respond to the Write, it should only snoop the data and permit the access to be forwarded to the ISA bus. The non-VGA ISA graphic controller can then snoop the data on the ISA bus. Unless you have the above situation, you should disable this option.

Disabled(default) Disables the function.

P4ARA-M BIOS Setup

Enabled

Enables the function.

Assign IRQ For VGA

This item allows the users to choose which IRQ to assign for the VGA.

The Choices: Enabled (default), Disabled.

Assign IRQ For USB

This item allows the users to choose which IRQ to assign for the USB.

The Choices: Enabled (default), Disabled.

PCI Latency Timer (CLK)

This items allows the end user to specify the value of the LetencyTimer for the PCI bus master. But the hardwired value must be limited to 25 or less.

Min 0

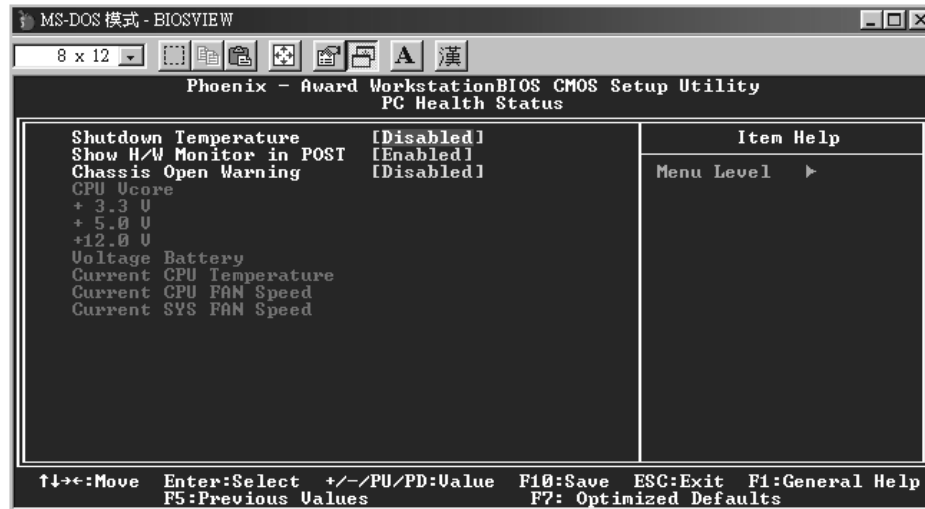
Max 25

The Choices: 64 (default)

P4ARA-M BIOS Setup

8 PC Health Status

■ Figure 8. PC Health Status



Shutdown Temperature

This item allows you to set up the CPU shutdown Temperature. This item only effective under Windows 98 ACPI mode.

The Choices: 60°C /140°F, 65°C /149°F, 70°C /158°F, **Disabled** (default).

Show H/W Monitor in POST

If your computer contains a monitoring system, it will show PC health status during POST stage. The item offers several delay times to select what you want.

The Choices: **Enabled** (default), Disabled.

Chassis Open Warning

Enable/Disable Chassis Open Warning Beep.

The Choices: **Disabled** (default), Enabled.

CPU Vcore/ +3.3V/ +5.0V/ +12V/ -12V/ Voltage Battery

Detect the system's voltage status automatically.

Current CPU Temperature

Show you the current CPU temperature.

P4ARA-M BIOS Setup

Current CPU FAN Speed

This field displays the current CPUFAN speed.

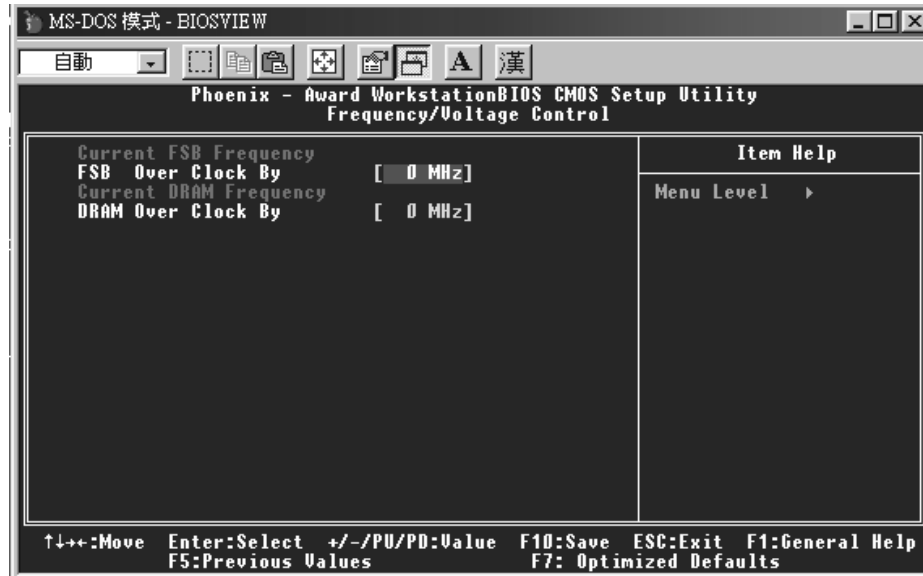
Current SYS FAN Speed

This field displays the current speed SYSTEM fan.

P4ARA-M BIOS Setup

9 Frequency Control

■ Figure 9. Frequency Control



Current FSB Frequency

This item shows the current CPU Front Side Bus Frequency.

FSB Over Clock By

This item allows end users to add on the Front Side Bus clock. The maximum range is within 15 MHz.

Current DRAM Frequency

This item shows the current DRAM Frequency.

DRAM Over Clock By

This item allows end users to add on the DRAM clock by the end user. The maximum range is within 15 MHz.

P4ARA-M BIOS Setup



If unfortunately, the system's frequency that you are selected is not functioning, there are two methods of booting-up the system.

Method 1: Clear the CMOS data by setting the JCOMS1 ((2-3) closed)) as "ON" status. All the CMOS data will be loaded as defaults setting.

Method 2: Press the <Insert> key and Power button simultaneously, after that keep-on pressing the <Insert> key until the power-on screen showed. This action will boot-up the system according to FSB of the processor.

※ **It's strongly recommended to set CPU Vcore and clock in default setting. If the CPU Vcore and clock are not in default setting, it may cause CPU or M/B damage.**